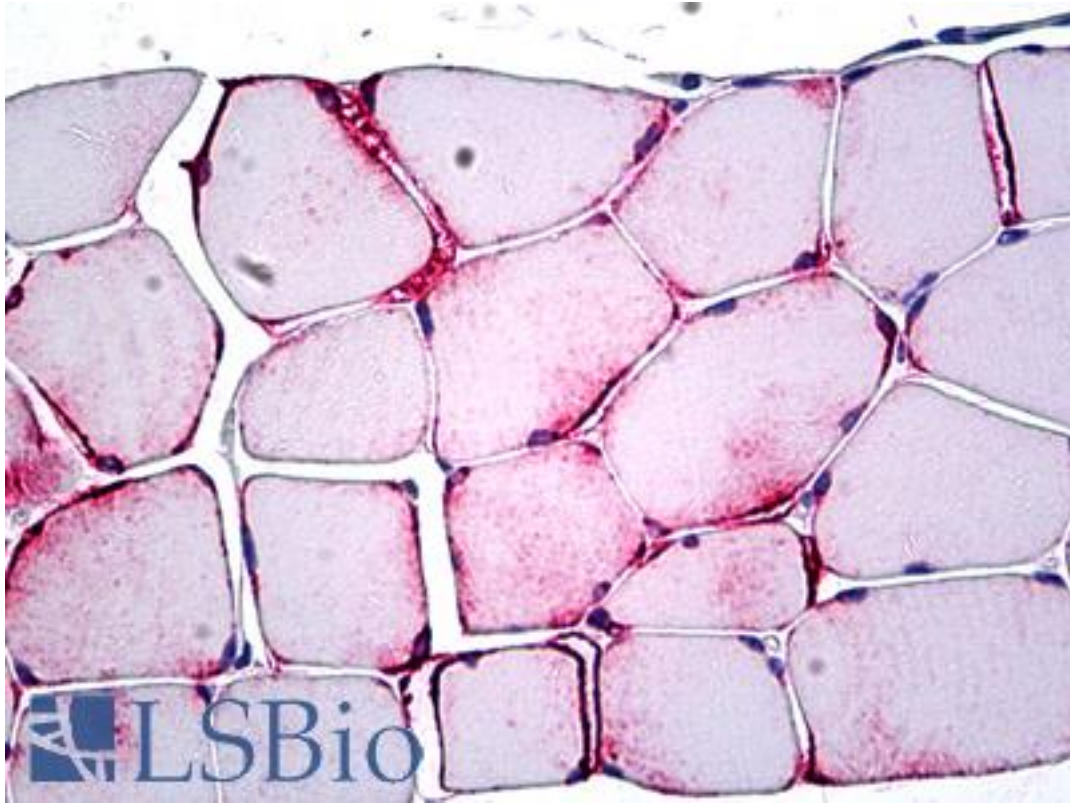


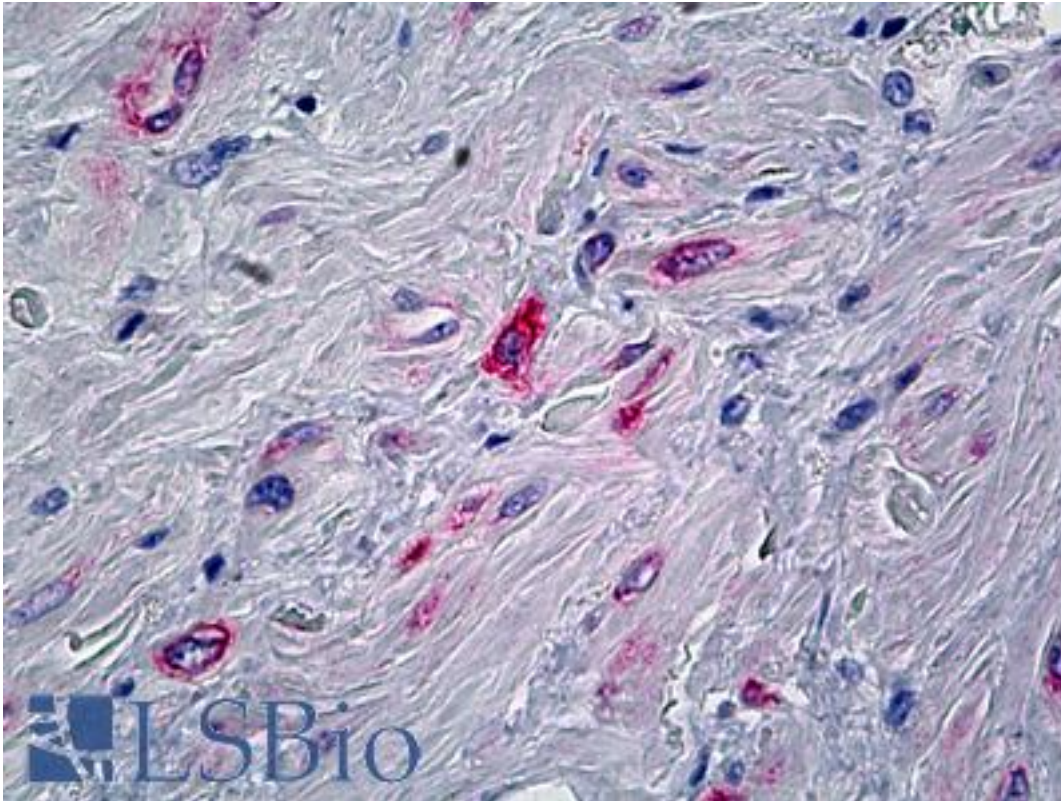
PPP1R13L / RAI / IASPP Rabbit anti-Human Polyclonal (aa75-125) Antibody - LS-B5248 - LSBio	
<b>CatalogID:</b>	LS-B5248
<b>Validation:</b>	This antibody replaces catalog number LS-C91565. It has been validated for use in the following assays: IHC-P.
<b>Target:</b>	protein phosphatase 1, regulatory subunit 13 like (PPP1R13L)
<b>Synonyms:</b>	PPP1R13L Antibody, IASPP Antibody, Inhibitor of ASPP protein Antibody, NFkB-interacting protein 1 Antibody, NKIP1 Antibody, RAI4 Antibody, RAI Antibody, Retinoic acid induced 4 Antibody, NFkB interacting protein 1 Antibody, PPP1R13BL Antibody, Protein iASPP Antibody, RelA-associated inhibitor Antibody, PPP1R13B-like protein Antibody
<b>Host</b>	PPP1R13L antibody was produced in Rabbit
<b>Clonality:</b>	Polyclonal
<b>Isotype:</b>	IgG
<b>Immunogen Species:</b>	PPP1R13L / RAI / IASPP antibody was raised against Human
<b>Antigen Type:</b>	Synthetic peptide
<b>Immunogen:</b>	PPP1R13L / RAI / IASPP antibody was raised against the epitope recognized by this antibody maps to a region between residue 75 and 125 of human inhibitor of apoptosis stimulating protein of p53 using the numbering given in entry NP_006654.2.
<b>Specificity:</b>	Recognizes human RBM25.
<b>Epitope:</b>	aa75-125
<b>Reactivity:</b>	Human
<b>Purification:</b>	Immunoaffinity purified
<b>Presentation:</b>	TBS, 0.1% BSA, 0.09% sodium azide
<b>Recommended Storage:</b>	Short term 4°C, long term aliquot and store at -20°C, avoid freeze thaw cycles.
<b>Usage Summary:</b>	Suitable for use in Western Blot and Immunoprecipitation. Western Blot: 1:2000-1:10000, immunoprecipitation: 2-5 ug/mg lysate.
<b>Uses:</b>	IHC - Paraffin (5 - 10 µg/ml), Western blot (1:2000 - 1:10000), Immunoprecipitation (2 - 5 µg/tst) (Optimal dilution to be determined by the researcher)
<b>Size:</b>	50 µl
<b>Concentration:</b>	0.2 mg/ml

**Immunohistochemistry Image:**



Anti-PPP1R13L / IASPP antibody IHC of human skeletal muscle. Immunohistochemistry of formalin-fixed, paraffin-embedded tissue after heat-induced antigen retrieval. Antibody LS-B5248 concentration 5 ug/ml.

**Immunohistochemistry Image:**



Anti-PPP1R13L / IASPP antibody IHC of human prostate, stroma. Immunohistochemistry of formalin-fixed, paraffin-embedded tissue after heat-induced antigen retrieval. Antibody LS-B5248 concentration 5 ug/ml.

**Requested From:**

Japan

Laboratory Reagent For In Vitro Research Use Only

Not for resale without prior written consent from LifeSpan BioSciences, Inc.

Created on 9/24/2014

© 2014 LifeSpan BioSciences