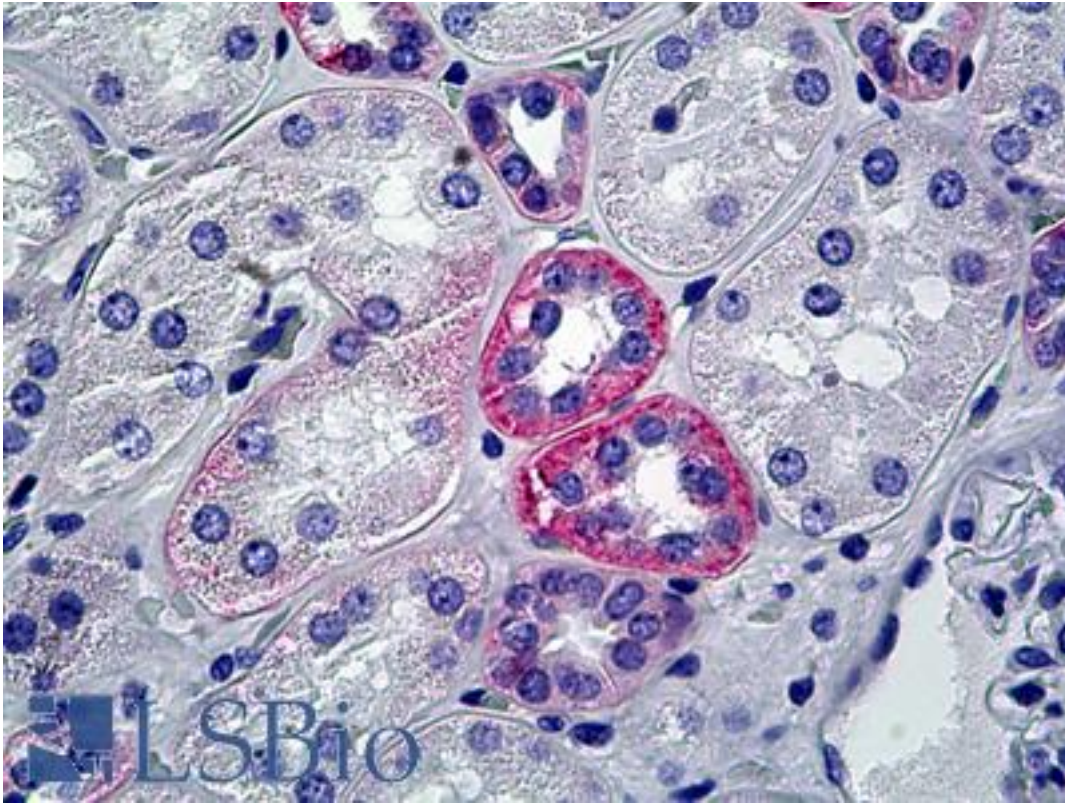


Heparan Sulfate Proteoglycan Rat Monoclonal Antibody - LS-B5244 - LSBio

CatalogID:	LS-B5244
Validation:	This antibody replaces catalog number LS-C67430. It has been validated for use in the following assays: IHC-P.
Target:	Heparan Sulfate Proteoglycan
Host	Rat
Clonality:	Monoclonal
Isotype:	IgG2a
Antigen Type:	Protein
Immunogen:	Heparan Sulfate Proteoglycan, Large.
Specificity:	Recognizes human Heparan Sulfate Proteoglycan, Large Species cross-reactivity: mouse, rat, and bovine.
Reactivity:	Human, Mouse, Rat, Bovine
Purification:	Purified
Presentation:	PBS, 0.09% sodium azide
Recommended Storage:	May be stored at 4°C for short-term only. Aliquot to avoid repeated freezing and thawing. Store at -20°C. Aliquots are stable for at least 12months.
Usage Summary:	Suitable for use in Immunohistochemistry, Western Blot, Immunoprecipitation and Immunocytochemistry. Western Blot: 1:100-1:1000. Immunohistochemistry (frozen and paraffin sections): 1:25-1:200 with avidin-biotinylated horseradish peroxidase complex (ABC) as a detecting reagent. Optimum dilutions to be determined by researcher. Hybridoma: X63Ag8.653 mouse myeloma cells with spleen cells from a Fisher rat.
Uses:	IHC - Paraffin (10 - 20 µg/ml), IHC - Frozen (1:25 - 1:200), ICC, Western blot (1:100 - 1:1000), Immunoprecipitation (Optimal dilution to be determined by the researcher)
Size:	50 µg
Concentration:	1 mg/ml

Immunohistochemistry Image:



Anti-Heparan Sulfate Proteoglycan antibody IHC of human kidney. Immunohistochemistry of formalin-fixed, paraffin-embedded tissue after heat-induced antigen retrieval. Antibody LS-B5244 concentration 10 ug/ml.

Requested From:

Japan

Laboratory Reagent For In Vitro Research Use Only

Not for resale without prior written consent from LifeSpan BioSciences, Inc.

Created on 9/24/2014

© 2014 LifeSpan BioSciences