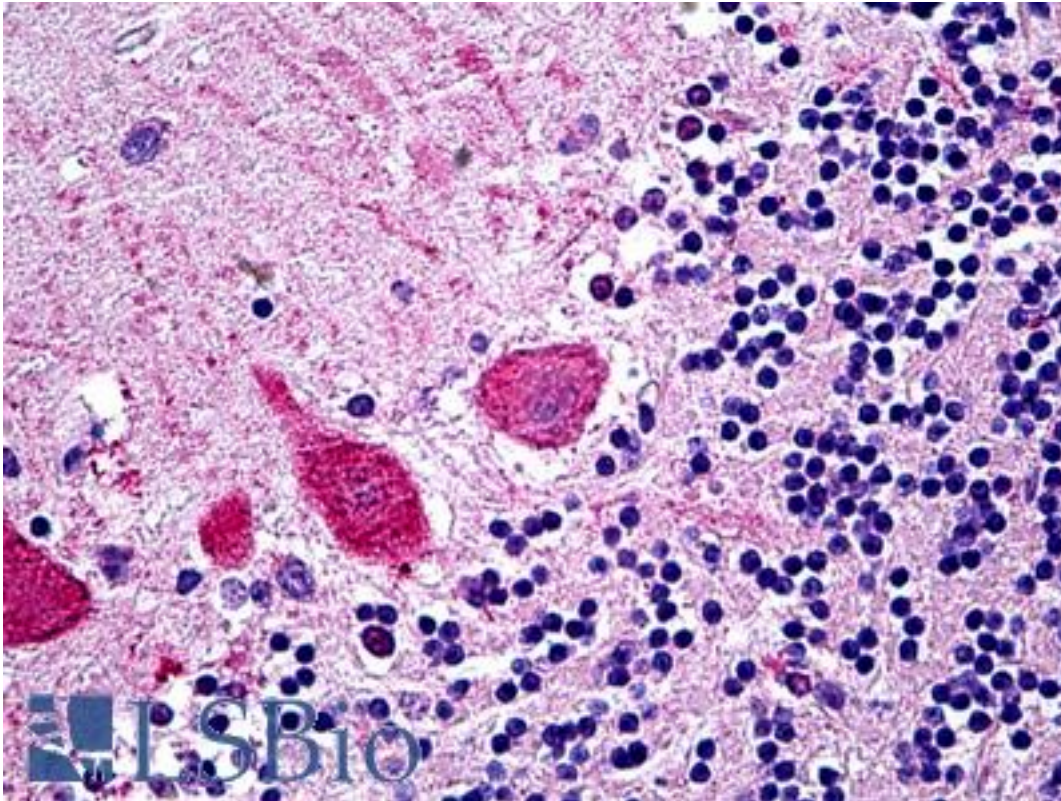


LIN41 / TRIM71 Goat anti-Human Polyclonal (Internal) Antibody - LS-B5240 - LSBio	
<b>CatalogID:</b>	LS-B5240
<b>Validation:</b>	This antibody replaces catalog number LS-C112974. It has been validated for use in the following assays: IHC-P.
<b>Target:</b>	tripartite motif containing 71, E3 ubiquitin protein ligase (TRIM71)
<b>Synonyms:</b>	TRIM71 Antibody, Abnormal cell LINEage LIN-41 Antibody, Homolog of C. elegans Lin-41 Antibody, Protein lin-41 homolog Antibody, LIN41 Antibody, Tripartite motif containing 71 Antibody, Tripartite motif-containing 71 Antibody, LIN-41 Antibody
<b>Host</b>	TRIM71 antibody was produced in Goat
<b>Clonality:</b>	Polyclonal
<b>Immunogen Species:</b>	LIN41 / TRIM71 antibody was raised against Human
<b>Antigen Type:</b>	Synthetic peptide
<b>Immunogen:</b>	LIN41 / TRIM71 antibody was raised against synthetic peptide C-RQVKAKSLYLQVE from an internal region of human TRIM71 (NP_001034200.1). Percent identity by BLAST analysis: Human, Gorilla, Gibbon, Monkey, Marmoset, Rat, Elephant, Panda, Bovine, Dog, Bat, Horse, Rabbit, Opossum, Turkey, Chicken, Platypus, Lizard, Pufferfish, Zebrafish (100%); Mouse, Xenopus, Stickleback (92%).
<b>Specificity:</b>	Human TRIM71.
<b>Epitope:</b>	Internal
<b>Reactivity:</b>	Human, Gorilla, Gibbon, Monkey, Rat, Bat, Bovine, Dog, Horse, Rabbit, Chicken, Zebrafish
<b>Predicted Reactivity:</b>	Mouse, Xenopus
<b>Purification:</b>	Immunoaffinity purified
<b>Presentation:</b>	Tris-buffered saline, pH 7.3, 0.5% BSA, 0.02% sodium azide
<b>Recommended Storage:</b>	Store at -20°C. Minimize freezing and thawing.
<b>Usage Summary:</b>	Peptide ELISA: antibody detection limit dilution 1:8000. Western blot: Approx 100kDa band observed in lysates of the cell lines HEK293 and NIH3T3 (calculated MW of 93.4kDa according to NP_001034200.1). The observed molecular weight corresponds to findings with EB09902, a product of different design reacting to a different part of the same protein. Recommended concentration: 0.5-1 ug/ml.
<b>Uses:</b>	IHC - Paraffin (3.75 µg/ml), Western blot (0.5 - 1 µg/ml), ELISA (1:8000) (Optimal dilution to be determined by the researcher)
<b>Size:</b>	50 µg
<b>Concentration:</b>	0.5 mg/ml

**Immunohistochemistry Image:**



Anti-TRIM71 antibody IHC of human brain cerebellum. Immunohistochemistry of formalin-fixed, paraffin-embedded tissue after heat-induced antigen retrieval. Antibody LS-B5240 concentration 3.75 ug/ml.

**Western Blot Image:**



TRIM71 antibody (0.5 ug/ml) staining of HEK293 lysate (35 ug protein/ml in RIPA buffer). Primary incubation was 1 hour. Detected by chemiluminescence.

**Requested From:**

Japan

Laboratory Reagent For In Vitro Research Use Only

Not for resale without prior written consent from LifeSpan BioSciences, Inc.

Created on 9/24/2014

© 2014 LifeSpan BioSciences