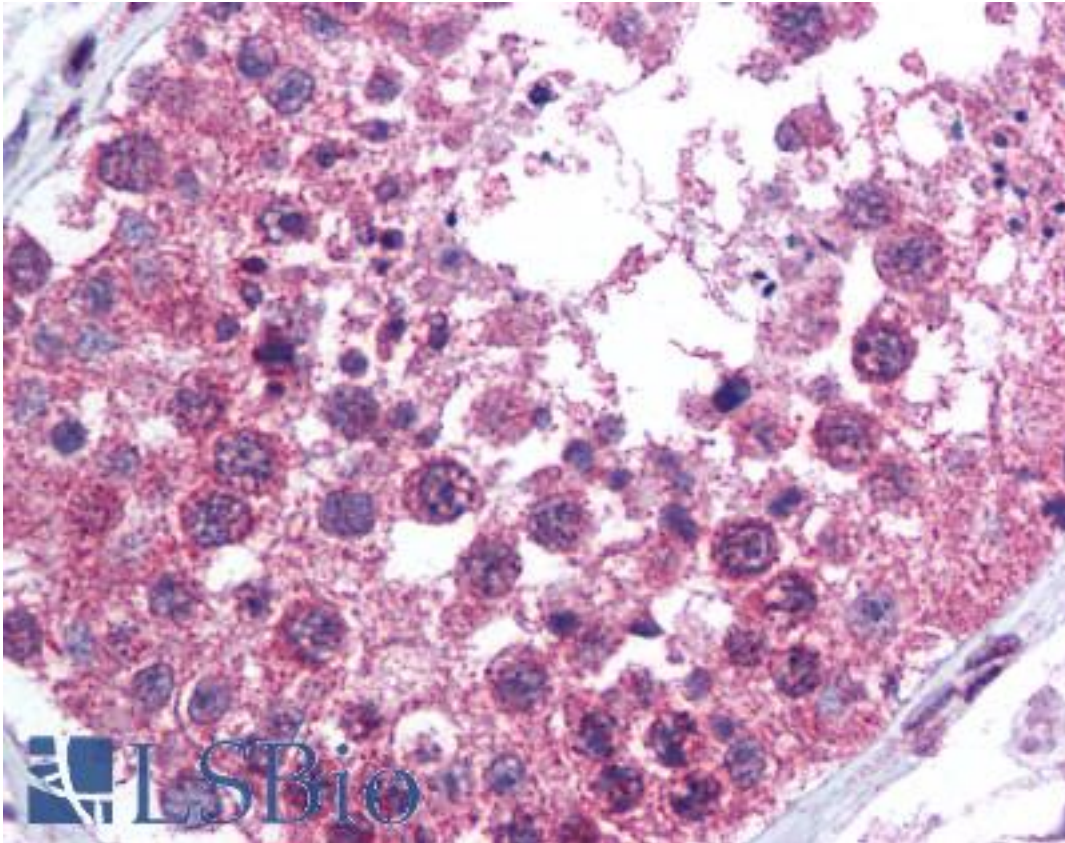


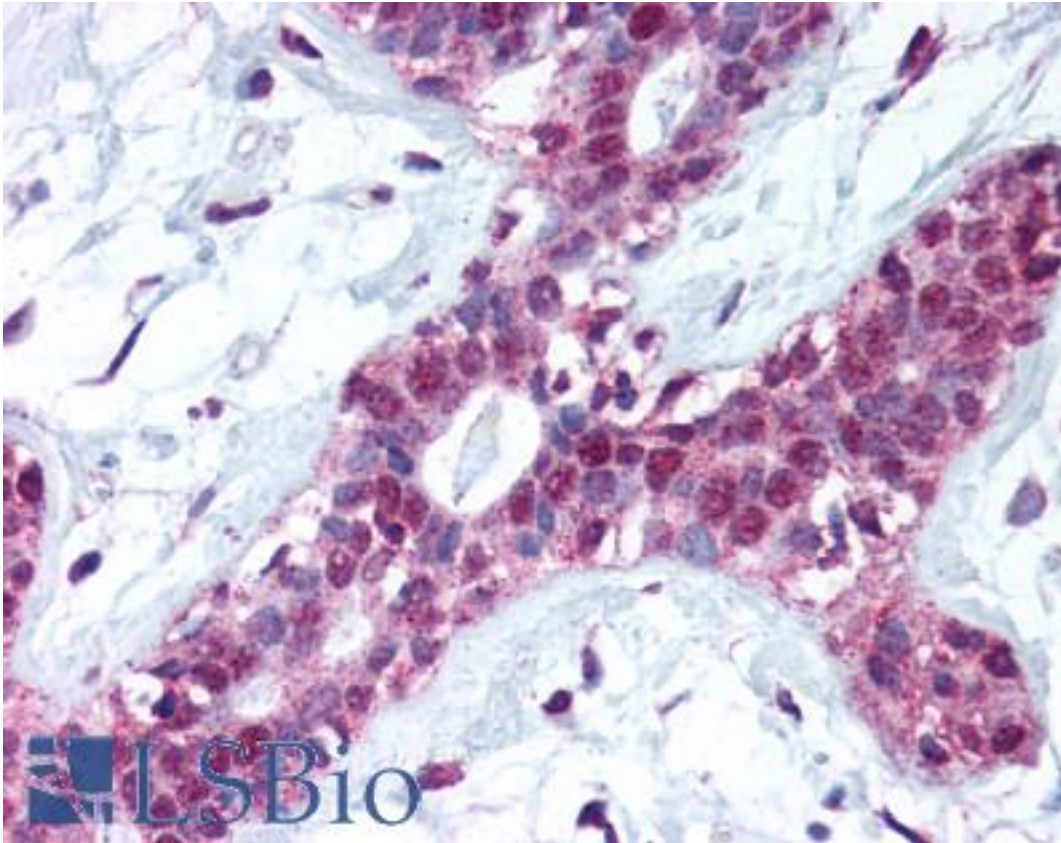
KLK13 / Kallikrein 13 Rabbit anti-Human Polyclonal (aa262-277) Antibody - LS-B524 - LSBio	
CatalogID:	LS-B524
Validation:	This antibody replaces catalog number LS-C2802. It has been validated for use in the following assays: IHC.
Target:	kallikrein-related peptidase 13 (KLK13)
Synonyms:	KLK13 Antibody, Kallikrein 13 Antibody, Kallikrein-13 Antibody, KLK-L4 Antibody, KLKL4 Antibody, Kallikrein-like protein 4 Antibody, Kallikrein-like gene 4 Antibody
Family / Subfamily:	Protease / Serine S1
Host	KLK13 antibody was produced in Rabbit
Clonality:	Polyclonal
Isotype:	IgG
Immunogen Species:	KLK13 / Kallikrein 13 antibody was raised against Human
Immunogen:	KLK13 / Kallikrein 13 antibody was raised against residues 262-277 [IRKYETQQQKWLKGPQ] of the human KLK-L4 protein. Percent identity by BLAST analysis: Human, Gorilla (100%); Gibbon (94%).
Specificity:	Reacts with residues 262-277 [IRKYETQQQKWLKGPQ] of the human KLK-L4 protein.
Epitope:	aa262-277
Reactivity:	Human, Gorilla
Predicted Reactivity:	Gibbon
Purification:	Affinity purified
Presentation:	PBS, 0.02% sodium azide.
Recommended Storage:	Long term: -20°C; Short term: +4°C. Avoid repeat freeze-thaw cycles.
Usage Summary:	Immunohistochemistry: LS-B524 was validated for use in immunohistochemistry on a panel of 21 formalin-fixed, paraffin-embedded (FFPE) human tissues after heat induced antigen retrieval in pH 6.0 citrate buffer. After incubation with the primary antibody, slides were incubated with biotinylated secondary antibody, followed by alkaline phosphatase-streptavidin and chromogen. The stained slides were evaluated by a pathologist to confirm staining specificity. The optimal working concentration for LS-B524 was determined to be 2.5 ug/ml.
Uses:	IHC - Paraffin (2.5 µg/ml), Western blot (1:500 - 1:1000) (Optimal dilution to be determined by the researcher)
Size:	50 µl
Concentration:	1 mg/ml

Immunohistochemistry Image:



Anti-Kallikrein 13 antibody IHC of human testis. Immunohistochemistry of formalin-fixed, paraffin-embedded tissue after heat-induced antigen retrieval. Antibody LS-B524 concentration 2.5 ug/ml.

Immunohistochemistry Image:



Anti-Kallikrein 13 antibody IHC of human breast. Immunohistochemistry of formalin-fixed, paraffin-embedded tissue after heat-induced antigen retrieval. Antibody LS-B524 concentration 2.5 ug/ml.

Requested From:

Japan

Laboratory Reagent For In Vitro Research Use Only

Not for resale without prior written consent from LifeSpan BioSciences, Inc.

Created on 9/24/2014

© 2014 LifeSpan BioSciences