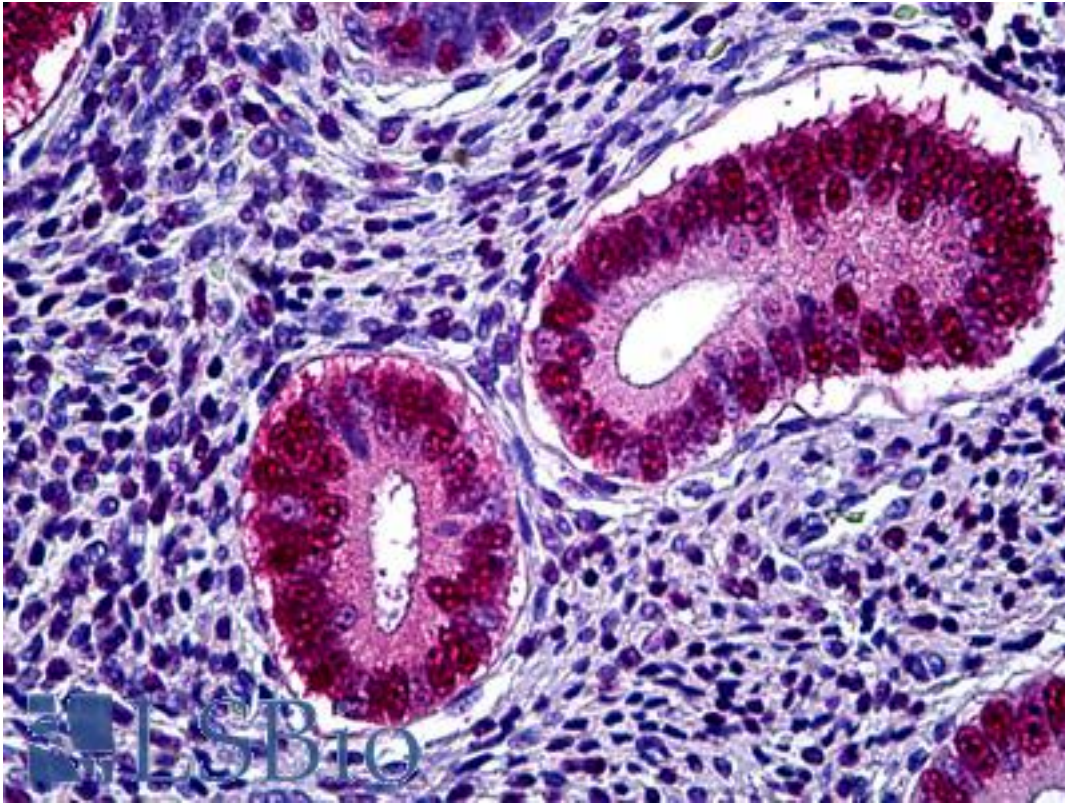


PGR/PR/Progesterone Receptor Mouse anti-Human Monoclonal Antibody - LS-B5236 - LSBio	
CatalogID:	LS-B5236
Validation:	This antibody replaces catalog number LS-C9730. It has been validated for use in the following assays: IHC-P.
Target:	progesterone receptor (PGR)
Synonyms:	PGR Antibody, NR3C3 Antibody, PR Antibody, Progesterone receptor Antibody
Family / Subfamily:	NHR / NR3 Steroid receptor
Host	PGR antibody was produced in Mouse
Clonality:	Monoclonal
Isotype:	IgG1,k
Immunogen Species:	PGR/PR/Progesterone Receptor antibody was raised against Human
Antigen Type:	Synthetic peptide
Immunogen:	PGR/PR/Progesterone Receptor antibody was raised against synthetic peptide from human PGR / Progesterone Receptor.
Specificity:	Equally recognizes two proteins: 116kD (triplet) and 81kD (singlet) which are identified as the hormone-binding high (B) and low (A) MW forms of human progesterone receptor. This antibody recognizes an epitope in the N-terminal half of human PgR. Species cross-reactivity: baboon, monkey, mouse and rat. Does not cross-react with guinea pig.
Reactivity:	Human, Monkey, Mouse, Rat
Purification:	Protein G purified
Presentation:	PBS, pH 7.4, 0.2% BSA, 0.09% sodium azide. Sourced in Ascites.
Recommended Storage:	May be stored at 4°C for short-term only. Aliquot to avoid repeated freezing and thawing. Store at -20°C. Aliquots are stable for at least 12months.
Usage Summary:	Suitable for use in Immunofluorescence, Western Blot, Immunoprecipitation, and Sedimentation in sucrose gradients. Immunoprecipitation (NATIVE ONLY): 2 ug/mg protein lysate Using Protein G. Western Blot: 1-2 ug/ml for 2 hrs at RT. Positive control: T47D cells or breast carcinoma.
Uses:	IHC - Paraffin (1:50), Immunofluorescence, Western blot (1 - 2 µg/ml), Immunoprecipitation (Optimal dilution to be determined by the researcher)
Size:	125 µl
Concentration:	0.2 mg/ml

Immunohistochemistry Image:



Anti-PGR / Progesterone Receptor antibody IHC of human uterus. Immunohistochemistry of formalin-fixed, paraffin-embedded tissue after heat-induced antigen retrieval. Antibody LS-B5236 dilution 1:50.

Requested From:

Japan

Laboratory Reagent For In Vitro Research Use Only

Not for resale without prior written consent from LifeSpan BioSciences, Inc.

Created on 9/24/2014

© 2014 LifeSpan BioSciences