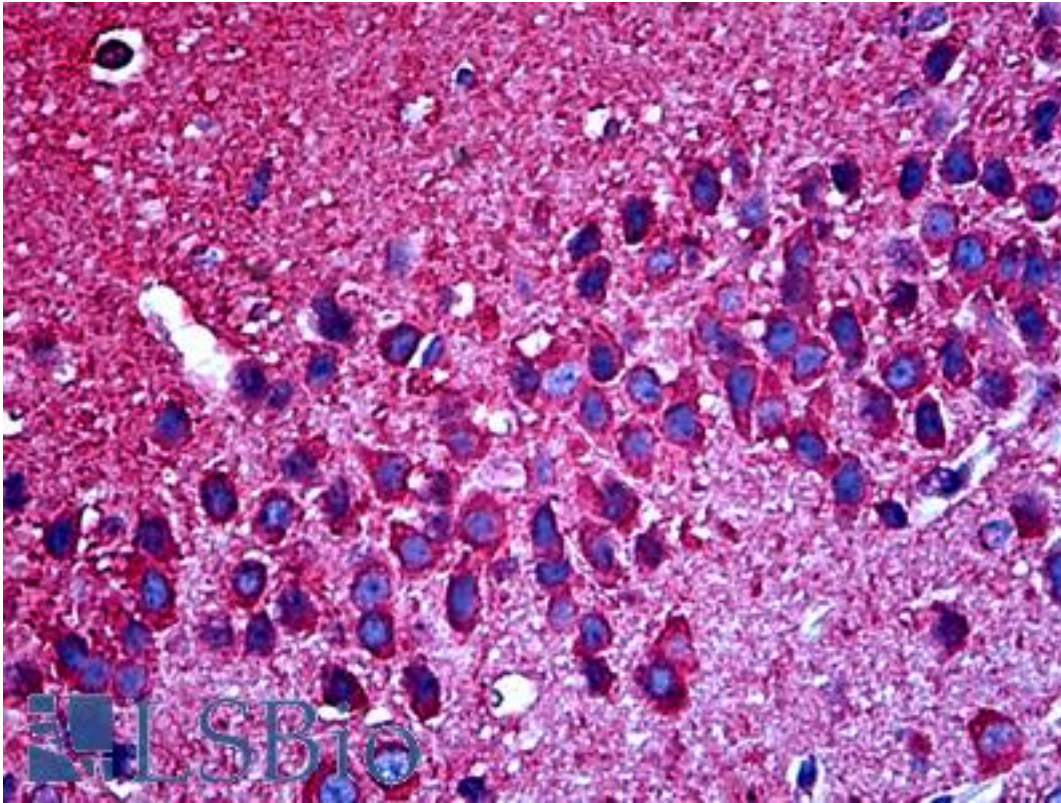


TUBB3 / Tubulin Beta 3 Chicken anti-Mouse Polyclonal Antibody - LS-B5225 - LSBio	
<b>CatalogID:</b>	LS-B5225
<b>Validation:</b>	This antibody replaces catalog number LS-C124724. It has been validated for use in the following assays: IHC-P.
<b>Target:</b>	tubulin, beta 3 class III (TUBB3)
<b>Synonyms:</b>	TUBB3 Antibody, CDCBM Antibody, Beta III Tubulin Antibody, Class III beta-tubulin Antibody, TUBB4 Antibody, Tubulin, beta 3 Antibody, Tubulin beta-III Antibody, Tubulin beta-3 chain Antibody, Tubulin beta-4 chain Antibody, Tubulin, beta 3 class III Antibody, CFEOM3A Antibody
<b>Family / Subfamily:</b>	Tubulin
<b>Host</b>	TUBB3 antibody was produced in Chicken
<b>Clonality:</b>	Polyclonal
<b>Isotype:</b>	IgY
<b>Immunogen Species:</b>	TUBB3 / Tubulin Beta 3 antibody was raised against Mouse
<b>Antigen Type:</b>	Synthetic peptide - KLH conjugated
<b>Immunogen:</b>	TUBB3 / Tubulin Beta 3 antibody was raised against three synthetic peptides corresponding to different regions of the beta-Tubulin 3 (KLH). Species sequence homology: human (NP_AAL28094, NCBI), rat (AAM28438, NCBI) 100%.
<b>Specificity:</b>	Recognizes beta-Tubulin 3. Species cross-reactivity: mouse. Species sequence homology: rat, human.
<b>Reactivity:</b>	Mouse
<b>Predicted Reactivity:</b>	Human, Rat
<b>Purification:</b>	Immunoaffinity purified
<b>Presentation:</b>	10mM PBS, pH 7.2, 0.02% sodium azide.
<b>Recommended Storage:</b>	May be stored at 4°C for short-term only. Aliquot to avoid repeated freezing and thawing. Store at -20°C. Aliquots are stable for at least 12 months.
<b>Usage Summary:</b>	Suitable for use in Immunohistochemistry, Immunocytochemistry and Western Blot. Immunohistochemistry: 1:1000-1:2000. Immunocytochemistry: 1:1000-1:2000. Western Blot: 1:2000-1:5000.
<b>Uses:</b>	IHC - Paraffin (5 µg/ml), ICC (1:1000 - 1:2000), Western blot (1:2000 - 1:5000) (Optimal dilution to be determined by the researcher)
<b>Size:</b>	75 µg
<b>Concentration:</b>	0.3 mg/ml

**Immunohistochemistry Image:**



Anti-Tuj1 antibody IHC of mouse brain. Immunohistochemistry of formalin-fixed, paraffin-embedded tissue after heat-induced antigen retrieval. Antibody LS-B5225 concentration 5 ug/ml.

**Requested From:**

Japan

Laboratory Reagent For In Vitro Research Use Only

Not for resale without prior written consent from LifeSpan BioSciences, Inc.

Created on 9/24/2014

© 2014 LifeSpan BioSciences