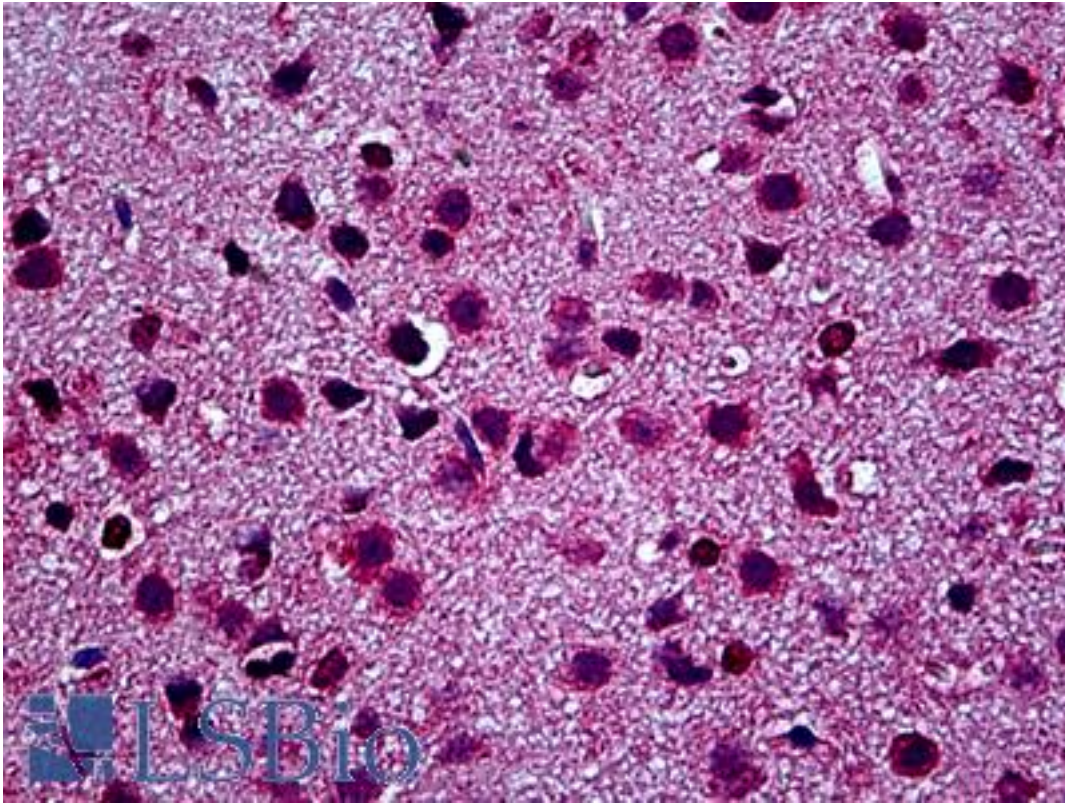


TLR9 Goat anti-Mouse Polyclonal (N-Terminus) Antibody - LS-B5222 - LSBio	
<b>CatalogID:</b>	LS-B5222
<b>Validation:</b>	This antibody replaces catalog number LS-C83987. It has been validated for use in the following assays: IHC-P.
<b>Target:</b>	toll-like receptor 9 (TLR9)
<b>Synonyms:</b>	TLR9 Antibody, CD289 Antibody, CD289 antigen Antibody, Scri2a Antibody, Toll-like receptor 9 Antibody
<b>Family / Subfamily:</b>	Toll-like Receptor / not assigned-Toll-like Receptor
<b>Host</b>	TLR9 antibody was produced in Goat
<b>Clonality:</b>	Polyclonal
<b>Immunogen Species:</b>	TLR9 antibody was raised against Mouse
<b>Antigen Type:</b>	Synthetic peptide
<b>Immunogen:</b>	TLR9 antibody was raised against synthetic peptide LSLKYNLTKVPRQLPPSLEY -C corresponding to amino acids 204-224 of the N-terminal domain of mouse TLR9. Percent identity by BLAST analysis: Mouse, Hamster (100%); Rat (95%); Dog, Cat, Horse (90%); Human, Chimpanzee, Gorilla, Orangutan, Gibbon, Monkey, Marmoset, Pig (86%); Sheep, Goat, Zebu, Bovine, Rabbit (81%).
<b>Specificity:</b>	Peptide sequence is <50 % identical to other mouse TLR receptors in this region. The antibody recognizes mouse TLR9 and human TLR9.
<b>Epitope:</b>	N-Terminus
<b>Reactivity:</b>	Mouse, Hamster
<b>Predicted Reactivity:</b>	Rat, Dog, Horse
<b>Purification:</b>	Immunoaffinity purified
<b>Presentation:</b>	Phosphate buffered saline, 1 mg/ml BSA, 0.1% sodium azide
<b>Recommended Storage:</b>	Store at -20°C. Aliquot to avoid freeze/thaw cycles.
<b>Uses:</b>	IHC - Paraffin (2.5 µg/ml), ICC (1:200), Western blot, ELISA (Optimal dilution to be determined by the researcher)
<b>Size:</b>	50 µg
<b>Concentration:</b>	1 mg/ml

**Immunohistochemistry Image:**



Anti-TLR9 antibody IHC of mouse brain. Immunohistochemistry of formalin-fixed, paraffin-embedded tissue after heat-induced antigen retrieval. Antibody LS-B5222 concentration 2.5 ug/ml.

**Requested From:**

Japan

Laboratory Reagent For In Vitro Research Use Only

Not for resale without prior written consent from LifeSpan BioSciences, Inc.

Created on 9/24/2014

© 2014 LifeSpan BioSciences