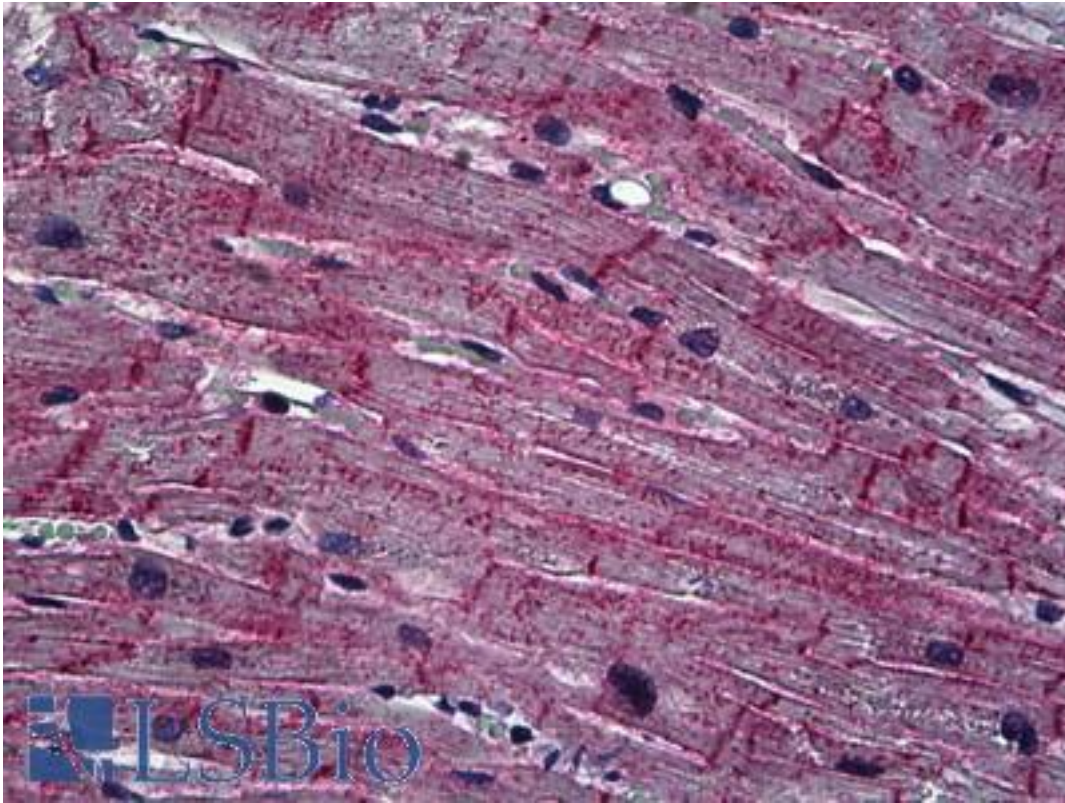


Dysferlin Rabbit anti-Human Polyclonal (C-Terminus) Antibody - LS-B5217 - LSBio

CatalogID:	LS-B5217
Validation:	This antibody replaces catalog number LS-C50557. It has been validated for use in the following assays: IHC-P.
Target:	dysferlin
Synonyms:	DYSF Antibody, Dysferlin Antibody, Fer-1-like protein 1 Antibody, FER1L1 Antibody, LGMD2B Antibody, MMD1 Antibody
Host	DYSF antibody was produced in Rabbit
Clonality:	Polyclonal
Isotype:	IgG
Immunogen Species:	Dysferlin antibody was raised against Human
Antigen Type:	Synthetic peptide
Immunogen:	Dysferlin antibody was raised against a synthetic peptide corresponding to C-terminal of human Dysferlin.
Epitope:	C-Terminus
Reactivity:	Human
Purification:	Immunoaffinity purified
Presentation:	10 mM PBS, pH 7.4, BSA, sodium azide.
Recommended Storage:	Store at 2°C to 8°C degrees. Do not freeze.
Uses:	IHC - Paraffin (1:50), Western blot (1 µg/ml) (Optimal dilution to be determined by the researcher)
Size:	250 µl

Immunohistochemistry Image:



Anti-DYSF / Dysferlin antibody IHC of human heart. Immunohistochemistry of formalin-fixed, paraffin-embedded tissue after heat-induced antigen retrieval. Antibody LS-B5217 dilution 1:50.

Requested From:

Japan

Laboratory Reagent For In Vitro Research Use Only

Not for resale without prior written consent from LifeSpan BioSciences, Inc.

Created on 9/24/2014

© 2014 LifeSpan BioSciences