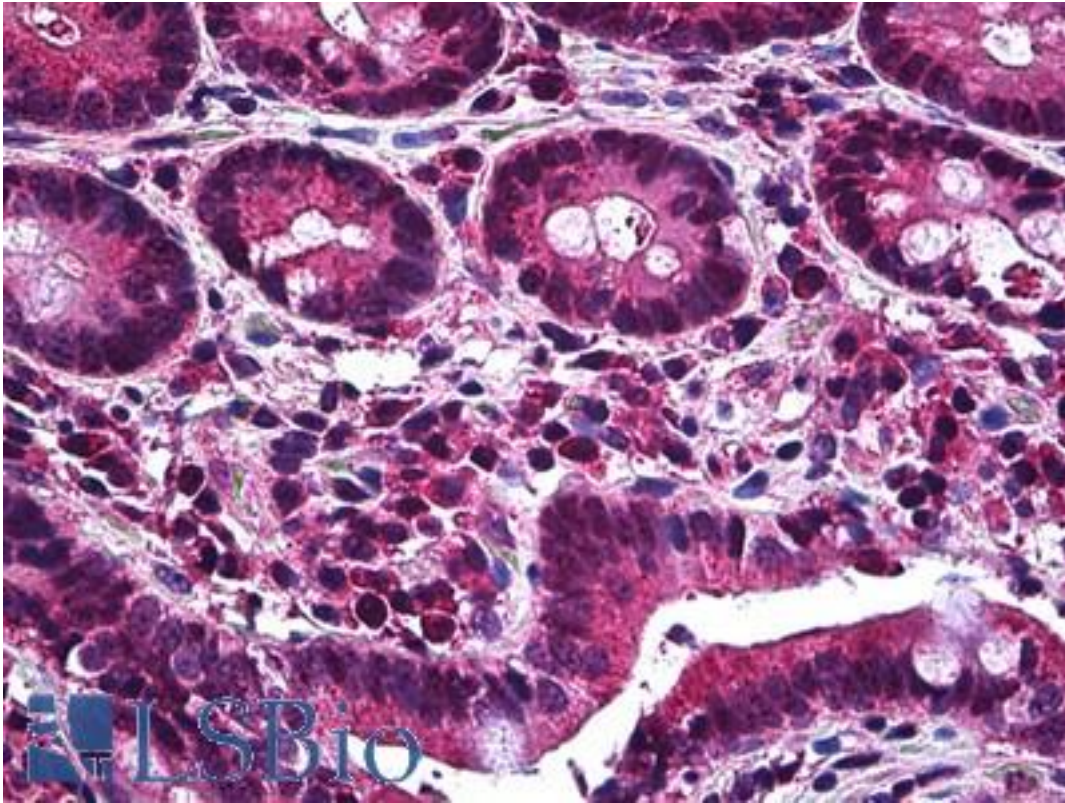


MCL1 / MCL 1 Rabbit anti-Human Polyclonal (aa121-139) Antibody - LS-B5215 - LSBio	
CatalogID:	LS-B5215
Validation:	This antibody replaces catalog number LS-C50554. It has been validated for use in the following assays: IHC-P.
Target:	myeloid cell leukemia sequence 1 (BCL2-related) (MCL1)
Synonyms:	MCL1 Antibody, BCL2L3 Antibody, Bcl-2-like protein 3 Antibody, Bcl-2-related protein EAT/mcl1 Antibody, Bcl2-L-3 Antibody, MCL1S Antibody, MCL1L Antibody, Myeloid cell leukemia ES Antibody, MCL 1 Antibody, MCL1-ES Antibody, TM Antibody, EAT Antibody, Mcl-1 Antibody
Host	MCL1 antibody was produced in Rabbit
Clonality:	Polyclonal
Isotype:	IgG
Immunogen Species:	MCL1 / MCL 1 antibody was raised against Human
Antigen Type:	Synthetic peptide
Immunogen:	MCL1 / MCL 1 antibody was raised against a synthetic peptide corresponding to aa 121-139 of human MCL-1.
Epitope:	aa121-139
Reactivity:	Human
Purification:	Immunoaffinity purified
Presentation:	10 mM PBS, pH 7.4, BSA, sodium azide.
Recommended Storage:	Store at 2°C to 8°C degrees. Do not freeze.
Uses:	IHC - Paraffin (1:25 - 1:100) (Optimal dilution to be determined by the researcher)
Size:	250 µl

Immunohistochemistry Image:



Anti-MCL1 antibody IHC of human small intestine. Immunohistochemistry of formalin-fixed, paraffin-embedded tissue after heat-induced antigen retrieval. Antibody LS-B5215 dilution 1:25.

Requested From:

Japan

Laboratory Reagent For In Vitro Research Use Only

Not for resale without prior written consent from LifeSpan BioSciences, Inc.

Created on 9/24/2014

© 2014 LifeSpan BioSciences