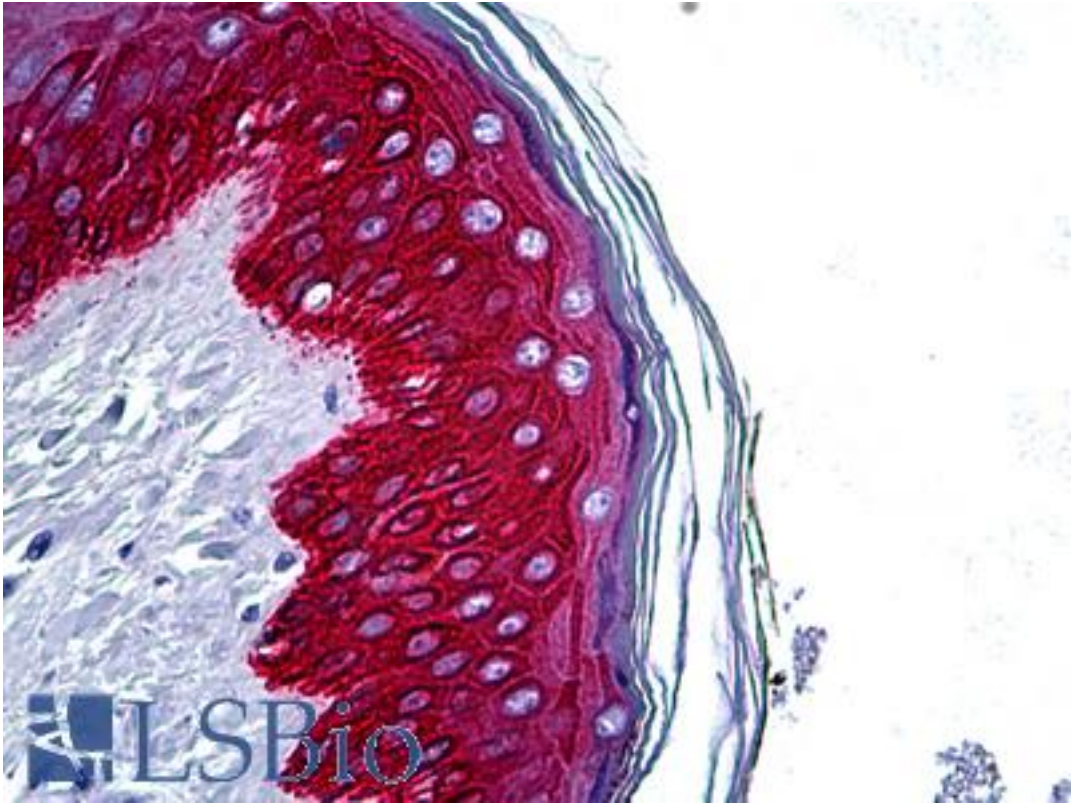


KRT14 / CK14 / Cytokeratin 14 Rabbit anti-Human Polyclonal (C-Terminus) Antibody - LS-B5213 - LSBio	
CatalogID:	LS-B5213
Validation:	This antibody replaces catalog number LS-C50552. It has been validated for use in the following assays: IHC-P.
Target:	keratin 14 (KRT14)
Synonyms:	KRT14 Antibody, CK-14 Antibody, EBS3 Antibody, EBS4 Antibody, K14 Antibody, Keratin-14 Antibody, CK14 Antibody, Cytokeratin 14 Antibody, Cytokeratin-14 Antibody, Keratin 14 Antibody, NFJ Antibody
Host	KRT14 antibody was produced in Rabbit
Clonality:	Polyclonal
Isotype:	IgG
Immunogen Species:	KRT14 / CK14 / Cytokeratin 14 antibody was raised against Human
Antigen Type:	Synthetic peptide
Immunogen:	KRT14 / CK14 / Cytokeratin 14 antibody was raised against a synthetic peptide derived from C-terminal of human Keratin 14.
Epitope:	C-Terminus
Reactivity:	Human
Purification:	Immunoaffinity purified
Presentation:	10 mM PBS, pH 7.4, BSA, sodium azide.
Recommended Storage:	Store at 2°C to 8°C degrees. Do not freeze.
Uses:	IHC - Paraffin (1:50) (Optimal dilution to be determined by the researcher)
Size:	250 µl

Immunohistochemistry Image:



Anti-KRT14 / Cytokeratin 14 antibody IHC of human skin. Immunohistochemistry of formalin-fixed, paraffin-embedded tissue after heat-induced antigen retrieval. Antibody LS-B5213 dilution 1:50.

Requested From:

Japan

Laboratory Reagent For In Vitro Research Use Only

Not for resale without prior written consent from LifeSpan BioSciences, Inc.

Created on 9/24/2014

© 2014 LifeSpan BioSciences