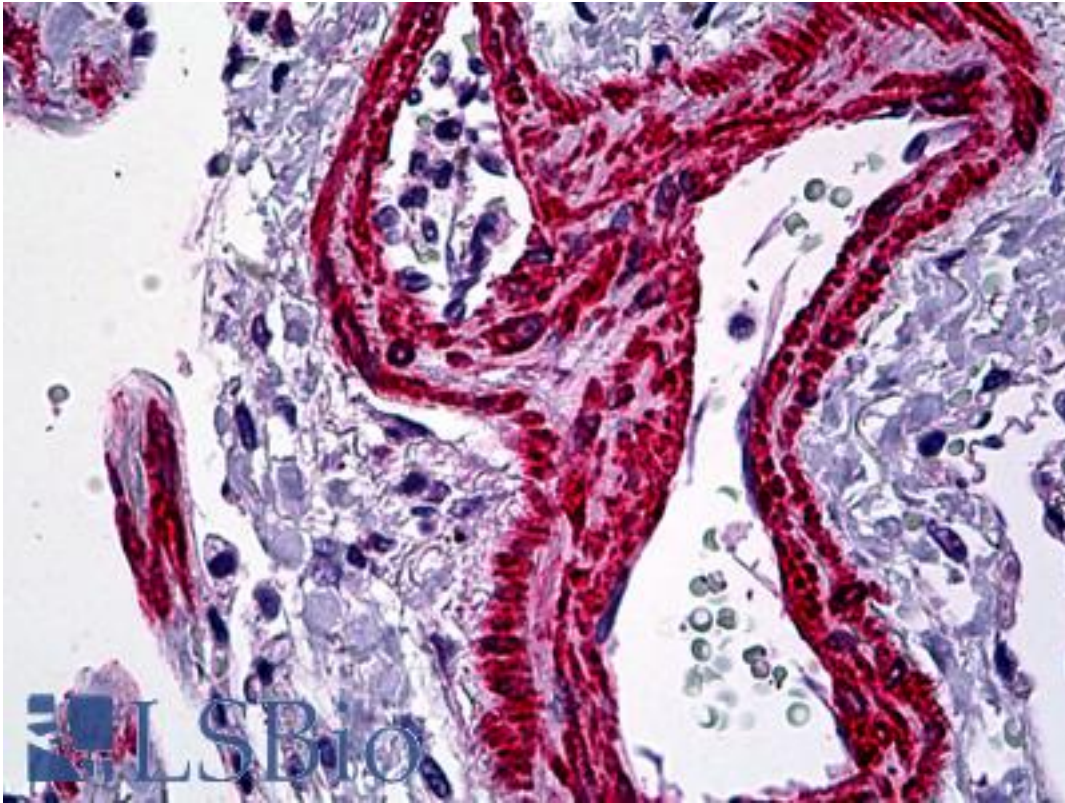


ACTA2 / Smooth Muscle Actin Rabbit anti-Human Polyclonal (N-Terminus) Antibody - LS-B5211 - LSBio	
CatalogID:	LS-B5211
Validation:	This antibody replaces catalog number LS-C50544. It has been validated for use in the following assays: IHC-P.
Target:	actin, alpha 2, smooth muscle, aorta (ACTA2)
Synonyms:	ACTA2 Antibody, ACTVS Antibody, Alpha-actin-2 Antibody, Alpha-cardiac actin Antibody, AAT6 Antibody, Actin, aortic smooth muscle Antibody, ACTSA Antibody, Smooth Muscle Actin Antibody, MYMY5 Antibody
Host	ACTA2 antibody was produced in Rabbit
Clonality:	Polyclonal
Isotype:	IgG
Immunogen Species:	ACTA2 / Smooth Muscle Actin antibody was raised against Human
Antigen Type:	Synthetic peptide
Immunogen:	ACTA2 / Smooth Muscle Actin antibody was raised against a synthetic peptide from N-terminus of human alpha smooth muscle isoform of actin.
Epitope:	N-Terminus
Reactivity:	Human, Baboon, Mouse, Rat, Bovine, Rabbit, Chicken
Purification:	Immunoaffinity purified
Presentation:	10 mM PBS, pH 7.4, BSA, sodium azide.
Recommended Storage:	Store at 2°C to 8°C degrees. Do not freeze.
Uses:	IHC - Paraffin (1:100) (Optimal dilution to be determined by the researcher)
Size:	250 µl

Immunohistochemistry Image:



Anti-ACTA2 antibody IHC of human lung, vessels. Immunohistochemistry of formalin-fixed, paraffin-embedded tissue after heat-induced antigen retrieval. Antibody LS-B5211 dilution 1:100.

Requested From:

Japan

Laboratory Reagent For In Vitro Research Use Only

Not for resale without prior written consent from LifeSpan BioSciences, Inc.

Created on 9/24/2014

© 2014 LifeSpan BioSciences