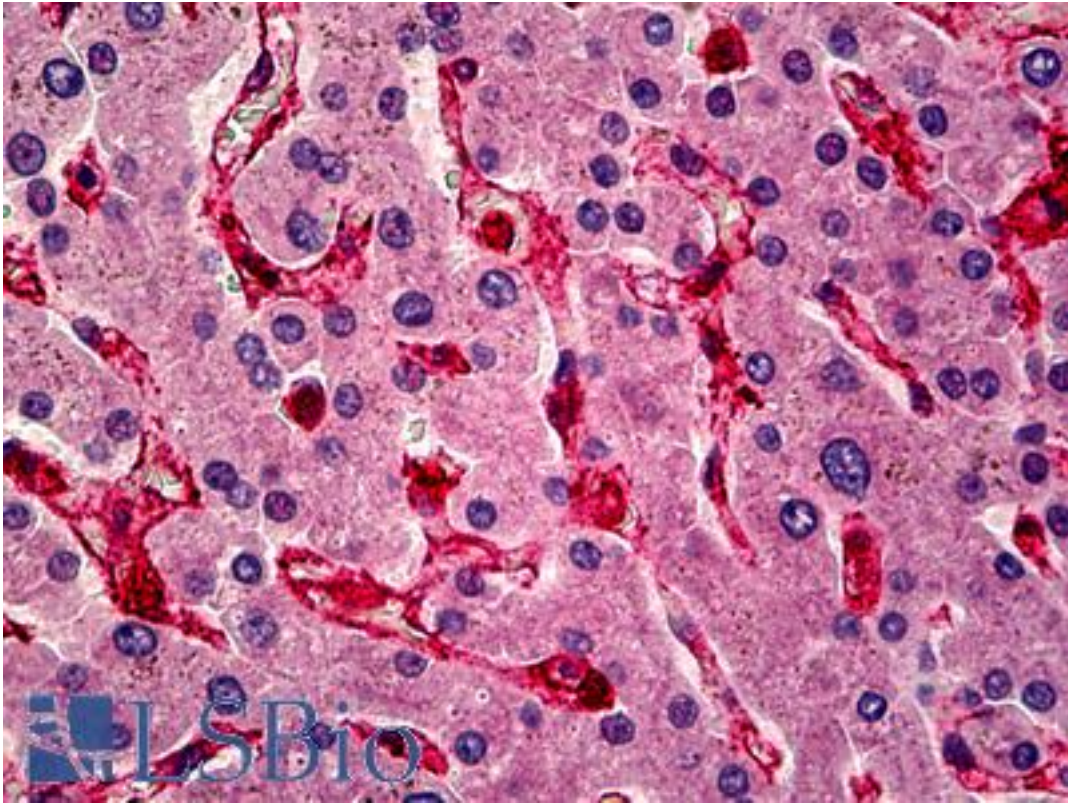


CAV1 / Caveolin 1 Rabbit anti-Human Polyclonal (C-Terminus) Antibody - LS-B5202 - LSBio

CatalogID:	LS-B5202
Validation:	This antibody replaces catalog number LS-C50528. It has been validated for use in the following assays: IHC-P.
Target:	caveolin 1, caveolae protein, 22kDa (CAV1)
Synonyms:	CAV1 Antibody, Caveolin-1 Antibody, CGL3 Antibody, CAV Antibody, MSTP085 Antibody, VIP21 Antibody, BSCL3 Antibody
Host	CAV1 antibody was produced in Rabbit
Clonality:	Polyclonal
Isotype:	IgG
Immunogen Species:	CAV1 / Caveolin 1 antibody was raised against Human
Antigen Type:	Synthetic peptide
Immunogen:	CAV1 / Caveolin 1 antibody was raised against a synthetic peptide from C-terminal domain of human caveolin-1.
Epitope:	C-Terminus
Reactivity:	Human
Purification:	Immunoaffinity purified
Presentation:	10 mM PBS, pH 7.4, BSA, sodium azide.
Recommended Storage:	Store at 2°C to 8°C degrees. Do not freeze.
Uses:	IHC - Paraffin (1:50) (Optimal dilution to be determined by the researcher)
Size:	250 µl

Immunohistochemistry Image:



Anti-CAV1 / Caveolin antibody IHC of human liver. Immunohistochemistry of formalin-fixed, paraffin-embedded tissue after heat-induced antigen retrieval. Antibody LS-B5202 dilution 1:50.

Requested From:

Japan

Laboratory Reagent For In Vitro Research Use Only

Not for resale without prior written consent from LifeSpan BioSciences, Inc.

Created on 9/24/2014

© 2014 LifeSpan BioSciences