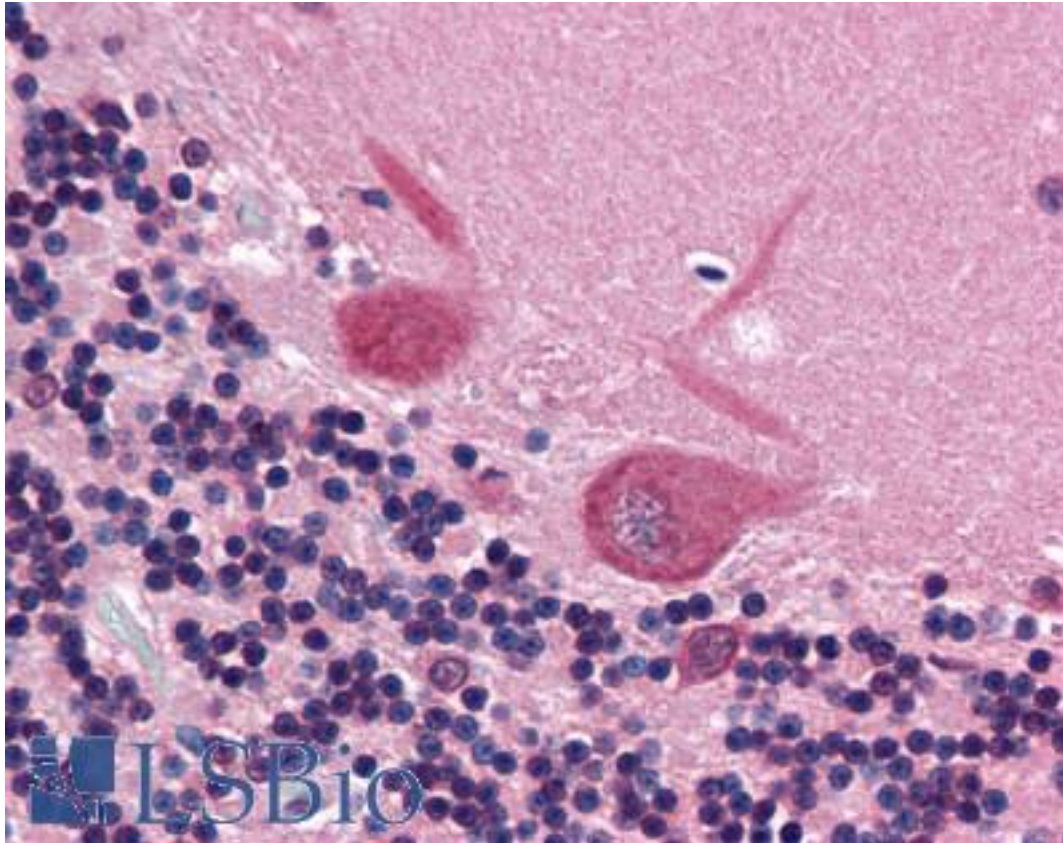


MAP1B Mouse anti-Bovine Monoclonal (3G5) Antibody - LS-B5165 - LSBio

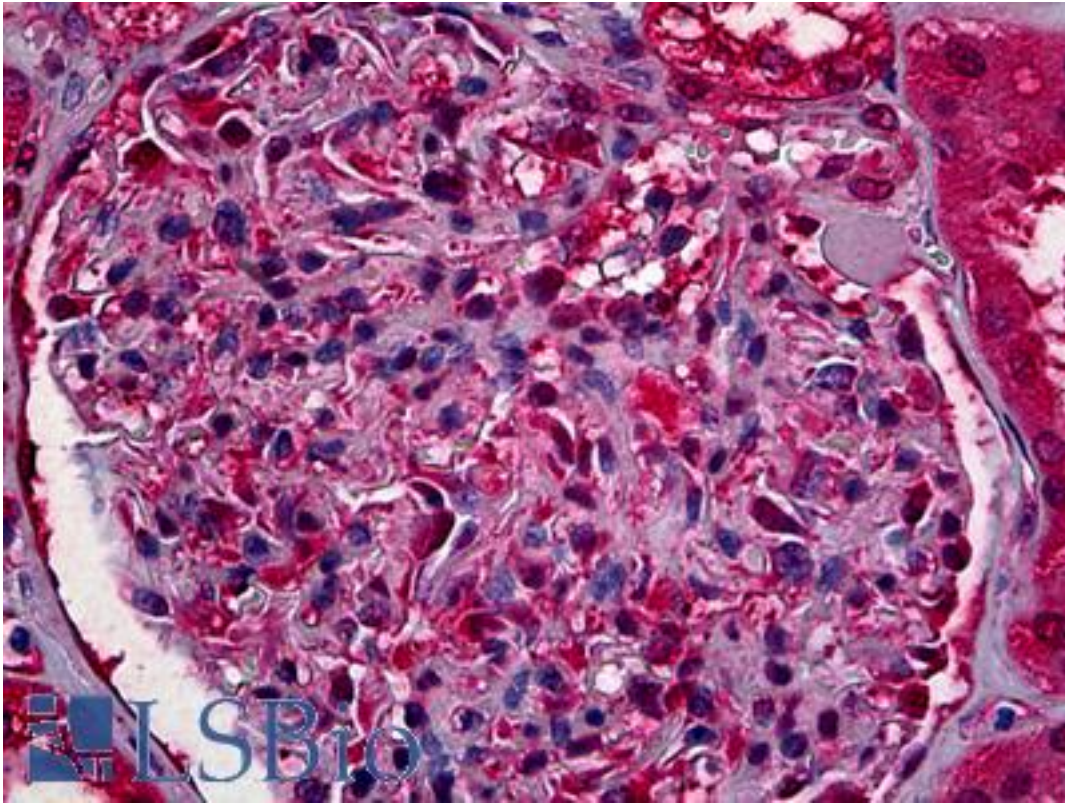
CatalogID:	LS-B5165
Validation:	This antibody replaces catalog number LS-C87977. It has been validated for use in the following assays: IHC-P.
Target:	microtubule-associated protein 1B (MAP1B)
Synonyms:	MAP1B Antibody, FUTSCH Antibody, MAP-1B Antibody, MAP5 Antibody
Host	MAP1B antibody was produced in Mouse
Clonality:	Monoclonal
Isotype:	IgG1
Clone Name:	3G5
Immunogen Species:	MAP1B antibody was raised against Bovine
Immunogen:	MAP1B antibody was raised against purified bovine brain MAPs.
Reactivity:	Bovine, Human, Rat
Purification:	Protein G purified
Presentation:	10mM PBS, pH 7.4, with 0.2% BSA and 0.09% Sodium Azide
Recommended Storage:	Stable for 24 months when stored at 2-8°C.
Uses:	IHC - Paraffin (1:50), Immunofluorescence (Optimal dilution to be determined by the researcher)
Size:	50 µg
Concentration:	0.2 mg/ml

Immunohistochemistry Image:



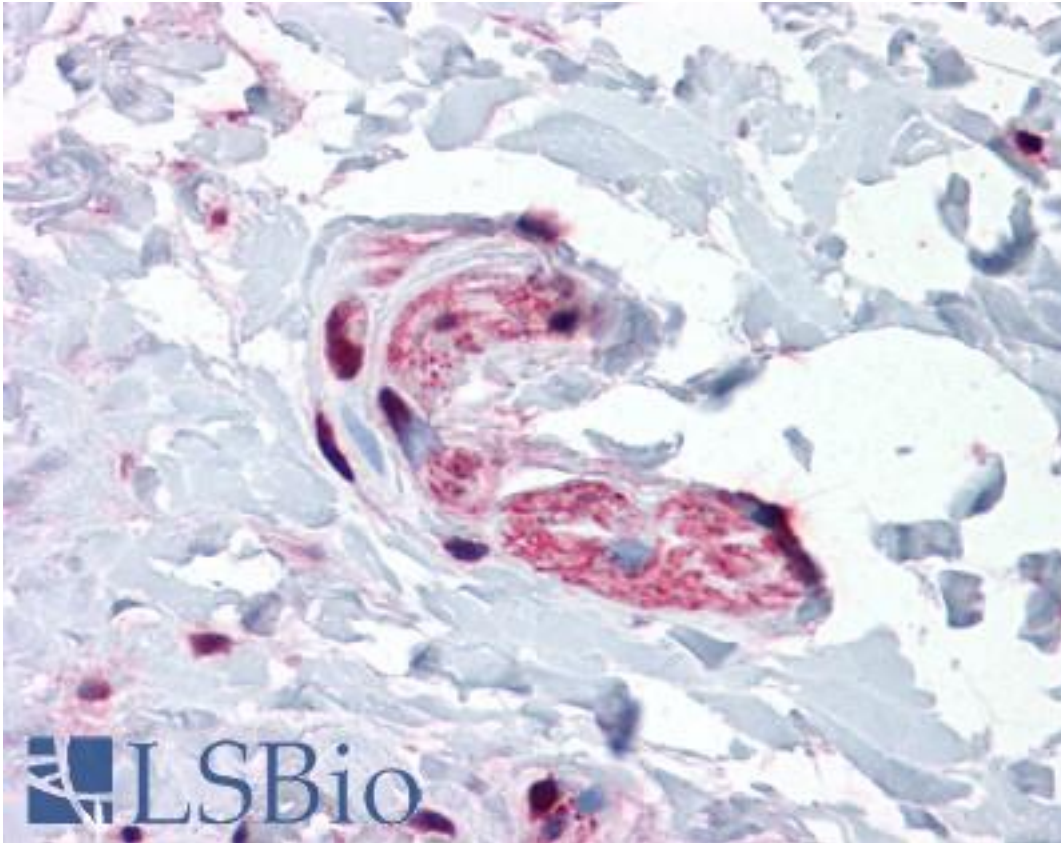
Anti-MAP1B antibody IHC of human brain, cerebellum. Immunohistochemistry of formalin-fixed, paraffin-embedded tissue after heat-induced antigen retrieval. Antibody LS-B5165 dilution 1:50.

Immunohistochemistry Image:



Anti-MAP1B antibody IHC of human kidney. Immunohistochemistry of formalin-fixed, paraffin-embedded tissue after heat-induced antigen retrieval. Antibody LS-B5165 dilution 1:50.

Immunohistochemistry Image:



Anti-MAP1B antibody IHC of human colon, peripheral nerve. Immunohistochemistry of formalin-fixed, paraffin-embedded tissue after heat-induced antigen retrieval. Antibody LS-B5165 dilution 1:50.

Requested From:

Japan

Laboratory Reagent For In Vitro Research Use Only

Not for resale without prior written consent from LifeSpan BioSciences, Inc.

Created on 9/24/2014

© 2014 LifeSpan BioSciences