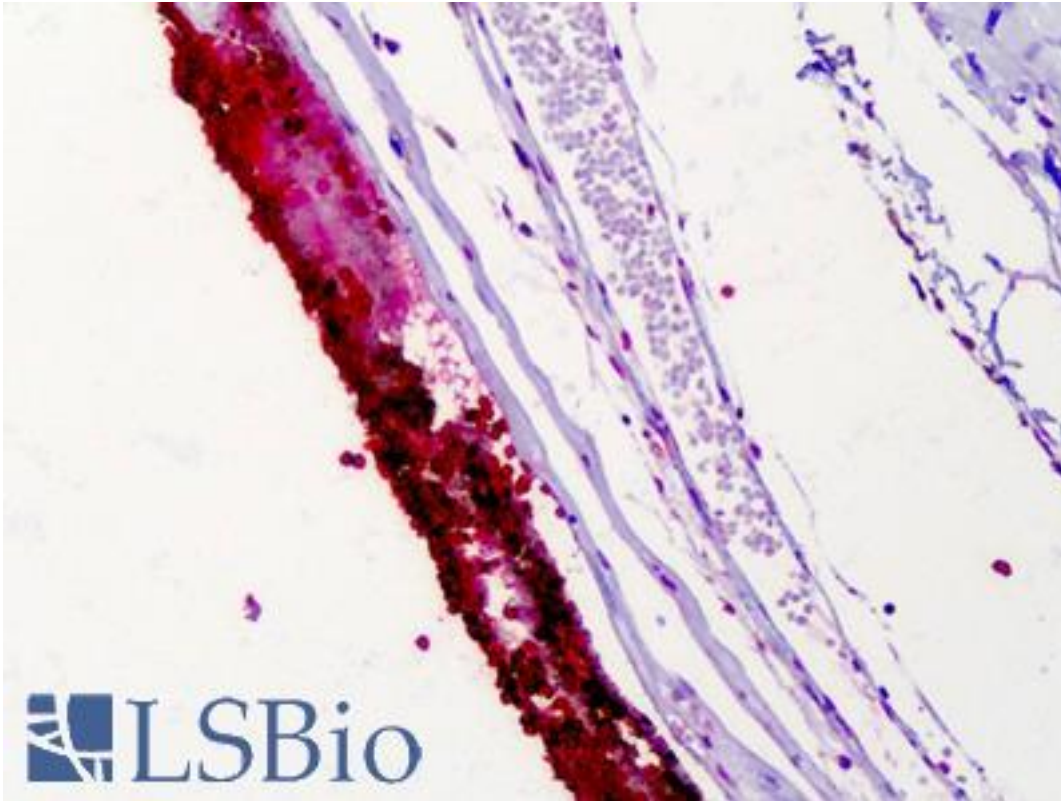


Rhodopsin / RHO Mouse anti-Rat Monoclonal (RET-P1) Antibody - LS-B5149 - LSBio

CatalogID:	LS-B5149
Validation:	This antibody replaces catalog number LS-C87626. It has been validated for use in the following assays: IHC-P.
Target:	rhodopsin
Synonyms:	RHO Antibody, CSNBAD1 Antibody, OPN2 Antibody, Rhodopsin Antibody, RP4 Antibody, Opsin 2, rod pigment Antibody, Opsin-2 Antibody
Family / Subfamily:	GPCR / Opsin
Host	RHO antibody was produced in Mouse
Clonality:	Monoclonal
Isotype:	IgG1
Clone Name:	RET-P1
Immunogen Species:	Rhodopsin / RHO antibody was raised against Rat
Immunogen:	Rhodopsin / RHO antibody was raised against membrane preparation from adult rat retina.
Reactivity:	Rat, Human, Mouse
Purification:	Protein G purified
Presentation:	10mM PBS, pH 7.4, with 0.2% BSA and 0.09% Sodium Azide
Recommended Storage:	Stable for 24 months when stored at 2-8°C.
Uses:	IHC - Paraffin (1:25 - 1:50), Immunofluorescence, Western blot (1 - 2 µg/ml) (Optimal dilution to be determined by the researcher)
Size:	50 µg
Concentration:	0.2 mg/ml

Immunohistochemistry Image:



Anti-RHO / Rhodopsin antibody IHC of human retina. Immunohistochemistry of formalin-fixed, paraffin-embedded tissue after heat-induced antigen retrieval. Antibody LS-B5149 dilution 1:25.

Requested From:

Japan

Laboratory Reagent For In Vitro Research Use Only

Not for resale without prior written consent from LifeSpan BioSciences, Inc.

Created on 9/24/2014

© 2014 LifeSpan BioSciences