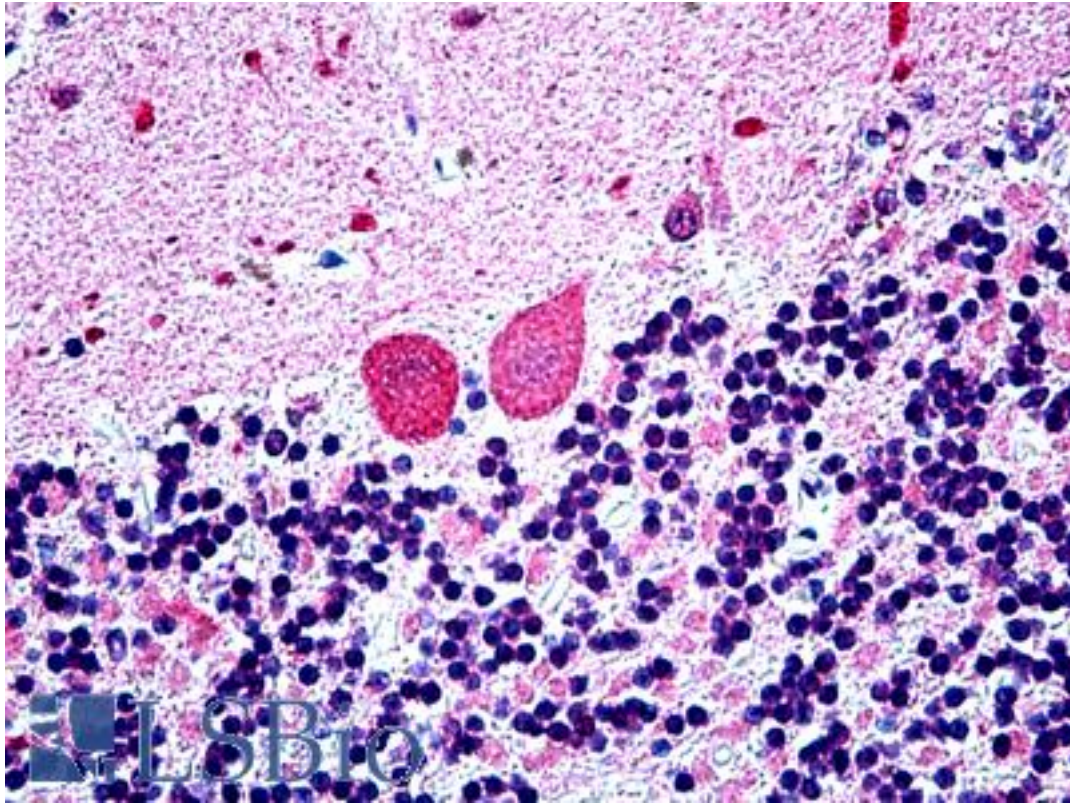


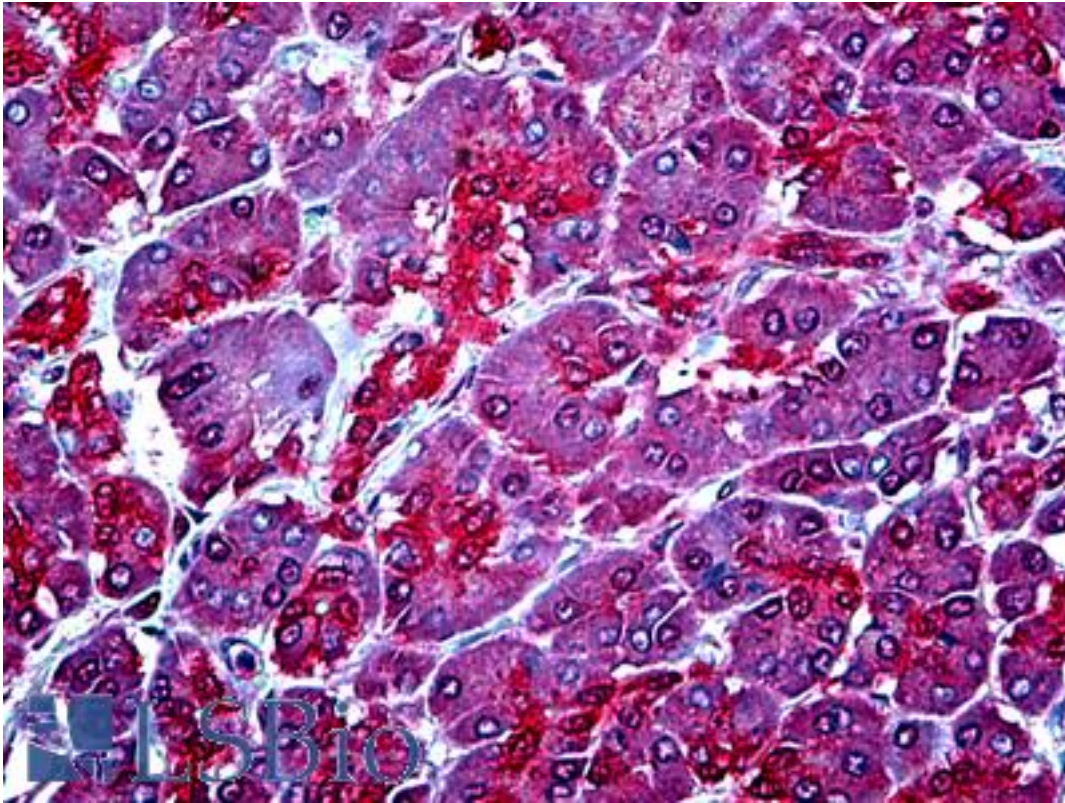
WBP1 Goat anti-Human Polyclonal (aa165-174) Antibody - LS-B5144 - LSBio	
CatalogID:	LS-B5144
Validation:	This antibody replaces catalog number LS-C114192. It has been validated for use in the following assays: IHC-P.
Target:	WW domain binding protein 1 (WBP1)
Synonyms:	WBP1 Antibody, WW domain binding protein 1 Antibody, WW domain-binding protein 1 Antibody, WBP-1 Antibody
Host	WBP1 antibody was produced in Goat
Clonality:	Polyclonal
Immunogen Species:	WBP1 antibody was raised against Human
Antigen Type:	Synthetic peptide
Immunogen:	WBP1 antibody was raised against synthetic peptide C-PAHFEGTNVE from an internal region of human WBP1 (NP_036609.1). Percent identity by BLAST analysis: Human, Gorilla, Gibbon, Monkey, Marmoset, Bat (100%); Panda, Pig (90%); Mouse, Hamster (80%).
Specificity:	Human WBP1.
Epitope:	aa165-174
Reactivity:	Human, Gorilla, Gibbon, Monkey, Bat
Predicted Reactivity:	Pig
Purification:	Immunoaffinity purified
Presentation:	Tris-buffered saline, pH 7.3, 0.5% BSA, 0.02% sodium azide
Recommended Storage:	Store at -20°C. Minimize freezing and thawing.
Uses:	IHC - Paraffin (3.75 - 7.5 µg/ml) (Optimal dilution to be determined by the researcher)
Size:	50 µg
Concentration:	0.5 mg/ml

Immunohistochemistry Image:



Anti-WBP1 antibody IHC of human brain, cerebellum. Immunohistochemistry of formalin-fixed, paraffin-embedded tissue after heat-induced antigen retrieval. Antibody LS-B5144 concentration 3.75 ug/ml.

Immunohistochemistry Image:



Anti-WBP1 antibody IHC of human pancreas. Immunohistochemistry of formalin-fixed, paraffin-embedded tissue after heat-induced antigen retrieval. Antibody LS-B5144 concentration 3.75 ug/ml.

Requested From:

Japan

Laboratory Reagent For In Vitro Research Use Only

Not for resale without prior written consent from LifeSpan BioSciences, Inc.

Created on 9/24/2014

© 2014 LifeSpan BioSciences