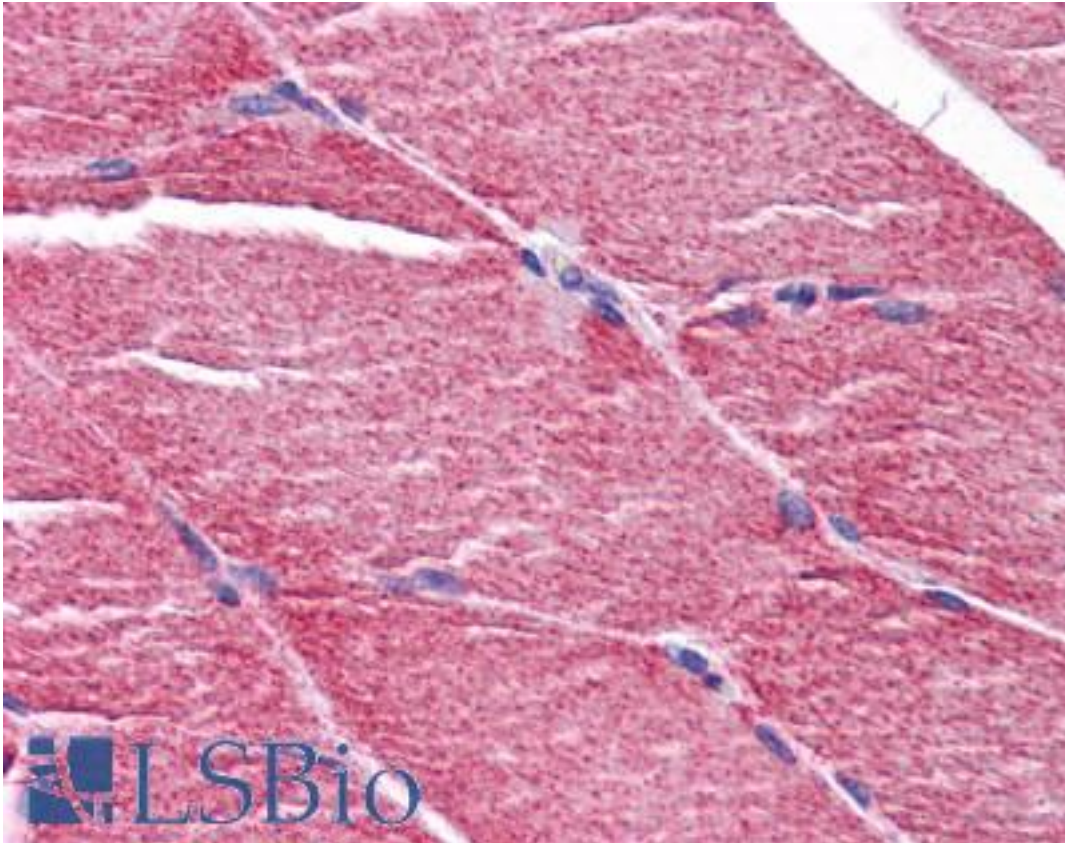


MYBPC2 Rabbit anti-Human Polyclonal (C-Terminus) Antibody - LS-B5081 - LSBio

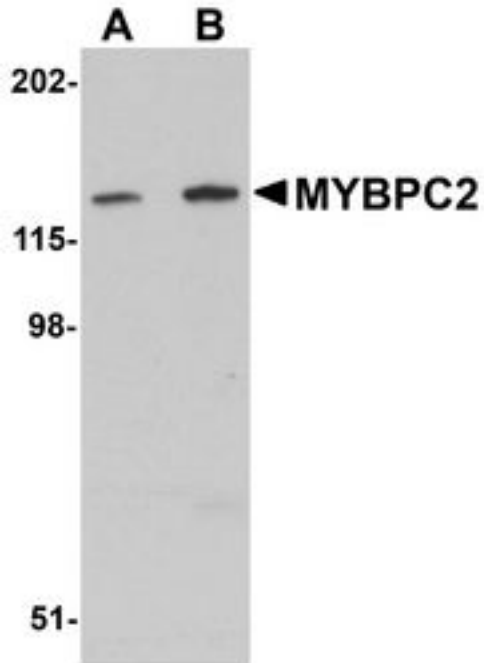
| | |
|-----------------------------|---|
| CatalogID: | LS-B5081 |
| Validation: | This antibody replaces catalog number LS-C108680. It has been validated for use in the following assays: IHC-P. |
| Target: | myosin binding protein C, fast type (MYBPC2) |
| Synonyms: | MYBPC2 Antibody, MYBPCF Antibody, Fast MyBP-C Antibody, MYBPC Antibody |
| Host | MYBPC2 antibody was produced in Rabbit |
| Clonality: | Polyclonal |
| Immunogen Species: | MYBPC2 antibody was raised against Human |
| Antigen Type: | Synthetic peptide |
| Immunogen: | MYBPC2 antibody was raised against a 15 amino acid peptide near the carboxy terminus of human MYBPC2. |
| Specificity: | Human MYBPC2 |
| Epitope: | C-Terminus |
| Reactivity: | Human, Mouse |
| Purification: | Immunoaffinity purified |
| Presentation: | PBS, 0.02% sodium azide |
| Recommended Storage: | Short term 4°C, long term aliquot and store at -20°C, avoid freeze thaw cycles. Store undiluted. |
| Usage Summary: | MYBPC2 antibody can be used for detection of MYBPC2 by Western blot at 1-2 ug/ml. |
| Uses: | IHC - Paraffin (5 µg/ml), Western blot (1 - 2 µg/ml), ELISA (Optimal dilution to be determined by the researcher) |
| Size: | 50 µg |
| Concentration: | 1 mg/ml |

Immunohistochemistry Image:



Anti-MYBPC2 antibody IHC of human skeletal muscle. Immunohistochemistry of formalin-fixed, paraffin-embedded tissue after heat-induced antigen retrieval. Antibody LS-B5081 concentration 5 ug/ml.

Western Blot Image:



Western blot analysis of MYBPC2 in mouse skeletal muscle tissue lysate with MYBPC2 antibody at (A) 1 and (B) 2 ug/ml.

Requested From:

Japan

Laboratory Reagent For In Vitro Research Use Only

Not for resale without prior written consent from LifeSpan BioSciences, Inc.

Created on 9/24/2014

© 2014 LifeSpan BioSciences