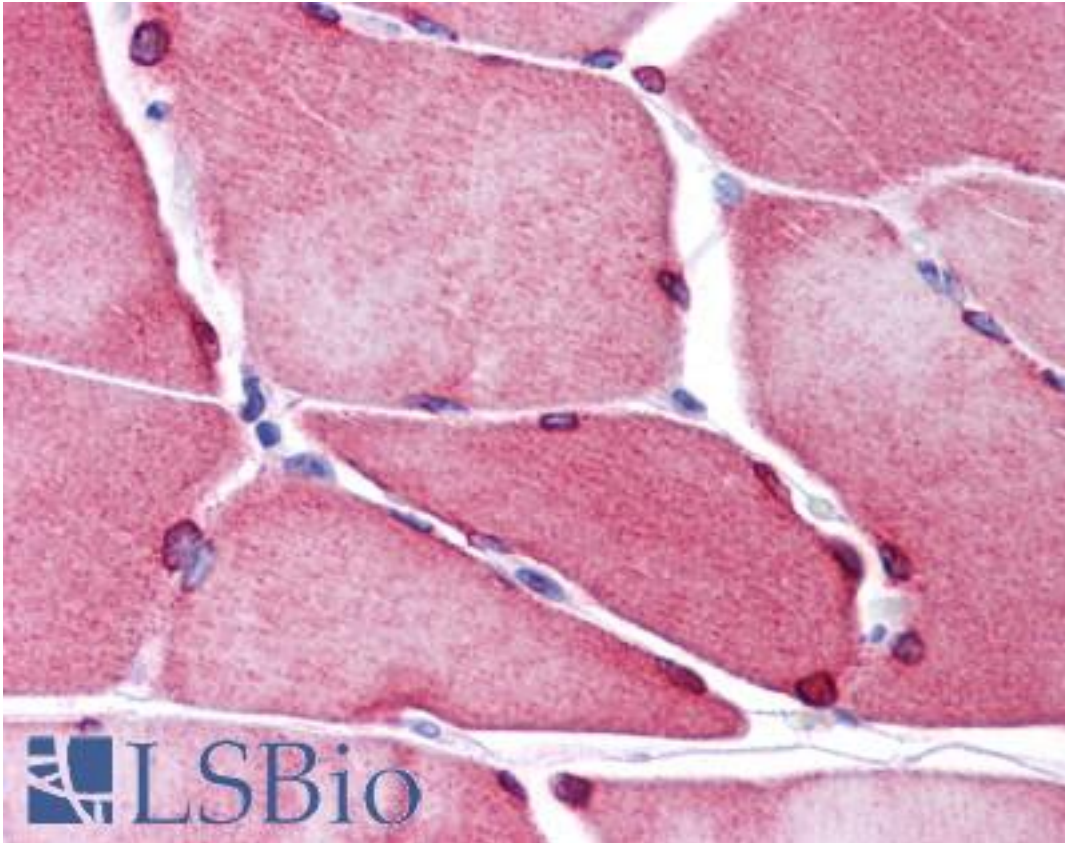


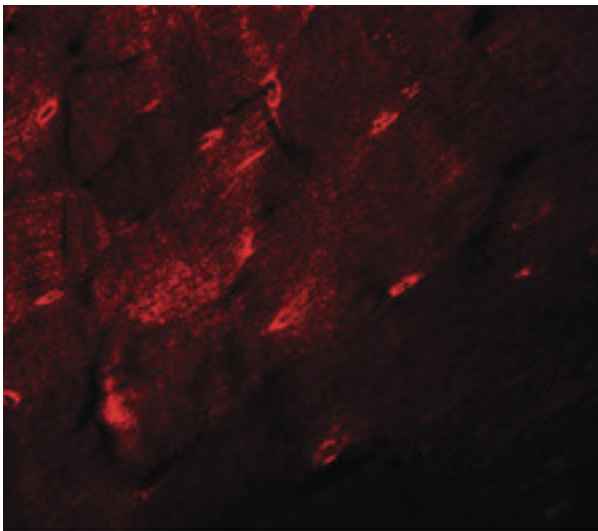
TMEM38A Rabbit anti-Human Polyclonal (C-Terminus) Antibody - LS-B5059 - LSBio	
CatalogID:	LS-B5059
Validation:	This antibody replaces catalog number LS-C108637. It has been validated for use in the following assays: IHC-P.
Target:	transmembrane protein 38A (TMEM38A)
Synonyms:	TMEM38A Antibody, TRICA Antibody, Transmembrane protein 38A Antibody, TRIC-A Antibody
Host	TMEM38A antibody was produced in Rabbit
Clonality:	Polyclonal
Immunogen Species:	TMEM38A antibody was raised against Human
Antigen Type:	Synthetic peptide
Immunogen:	TMEM38A antibody was raised against a 17 amino acid peptide from near the carboxy terminus of human TMEM38A.
Specificity:	Human TMEM38A
Epitope:	C-Terminus
Reactivity:	Human, Mouse, Rat
Purification:	Immunoaffinity purified
Presentation:	PBS, 0.02% sodium azide
Recommended Storage:	Short term 4°C, long term aliquot and store at -20°C, avoid freeze thaw cycles. Store undiluted.
Usage Summary:	TMEM38A antibody can be used for detection of TMEM38A by Western blot at 1-2 ug/ml.
Uses:	IHC - Paraffin (5 µg/ml), Western blot (1 - 2 µg/ml), ELISA (Optimal dilution to be determined by the researcher)
Size:	50 µg
Concentration:	1 mg/ml

Immunohistochemistry Image:



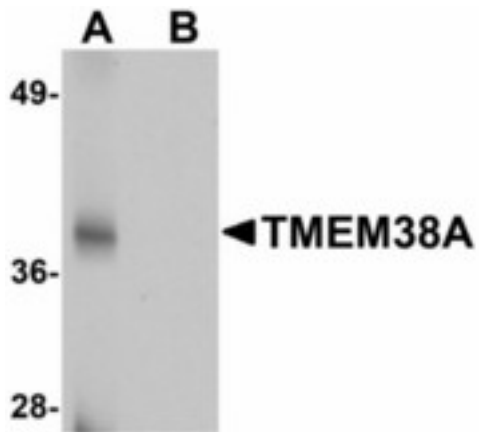
Anti-TMEM38A antibody IHC of human skeletal muscle. Immunohistochemistry of formalin-fixed, paraffin-embedded tissue after heat-induced antigen retrieval. Antibody LS-B5059 concentration 5 ug/ml.

Immunofluorescence Image:



Immunofluorescence of TMEM38A in mouse skeletal muscle tissue with TMEM38A antibody at 20 ug/ml.

Western Blot Image:



Western blot of TMEM38A in rat skeletal muscle tissue lysate with TMEM38A antibody at 1 ug/ml in (A) the absence and (B) the presence of blocking peptide.

Requested From:

Japan

Laboratory Reagent For In Vitro Research Use Only

Not for resale without prior written consent from LifeSpan BioSciences, Inc.

Created on 9/24/2014

© 2014 LifeSpan BioSciences