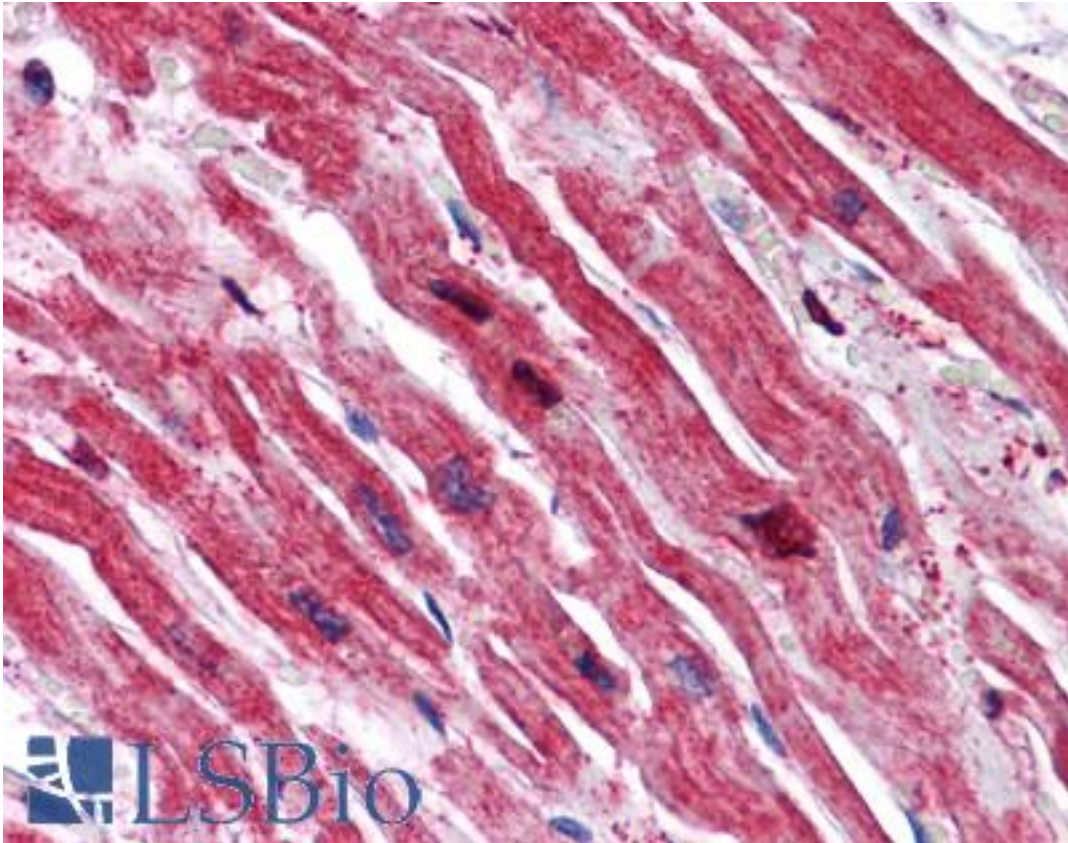


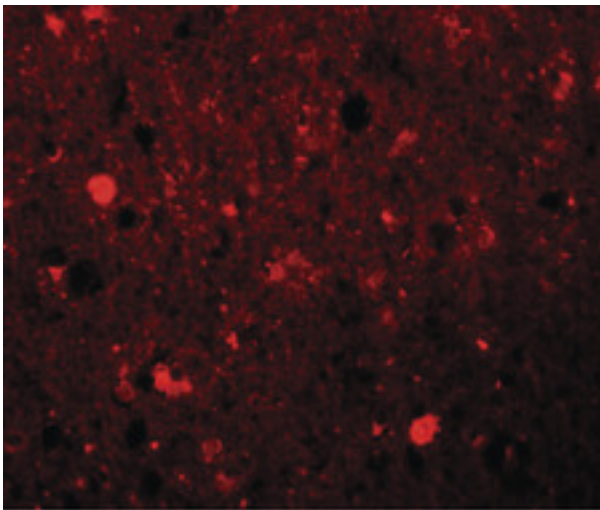
SRPX Rabbit anti-Human Polyclonal (N-Terminus) Antibody - LS-B5049 - LSBio	
CatalogID:	LS-B5049
Validation:	This antibody replaces catalog number LS-C108618. It has been validated for use in the following assays: IHC-P.
Target:	sushi-repeat containing protein, X-linked (SRPX)
Synonyms:	SRPX Antibody, DRS Antibody, ETX1 Antibody, SRPX1 Antibody
Host	SRPX antibody was produced in Rabbit
Clonality:	Polyclonal
Immunogen Species:	SRPX antibody was raised against Human
Antigen Type:	Synthetic peptide
Immunogen:	SRPX antibody was raised against a 13 amino acid peptide from near the amino terminus of human SRPX1.
Specificity:	Human SRPX
Epitope:	N-Terminus
Reactivity:	Human, Mouse, Rat
Purification:	Immunoaffinity purified
Presentation:	PBS, 0.02% sodium azide
Recommended Storage:	Short term 4°C, long term aliquot and store at -20°C, avoid freeze thaw cycles. Store undiluted.
Usage Summary:	SRPX1 antibody can be used for detection of SRPX1 by Western blot at 0.25-0.5 ug/ml.
Uses:	IHC - Paraffin (5 µg/ml), Western blot (0.25 - 0.5 µg/ml), ELISA (Optimal dilution to be determined by the researcher)
Size:	50 µg
Concentration:	1 mg/ml

Immunohistochemistry Image:



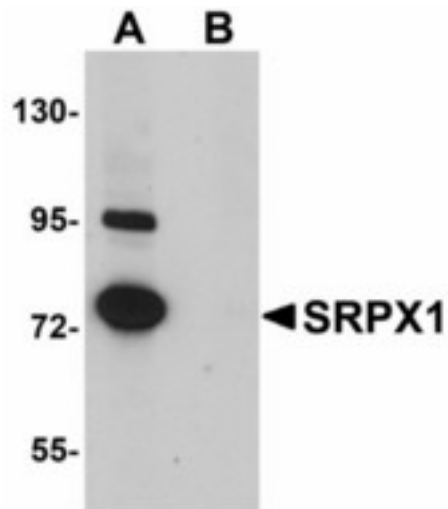
Anti-SRPX antibody IHC of human heart. Immunohistochemistry of formalin-fixed, paraffin-embedded tissue after heat-induced antigen retrieval. Antibody LS-B5049 concentration 5 ug/ml.

Immunofluorescence Image:



Immunofluorescence of SRPX1 in human brain tissue with SRPX1 antibody at 20 ug/ml.

Western Blot Image:



Western blot of SRPX1 in SK-N-SH cell lysate with SRPX1 antibody at 0.25 ug/ml in (A) the absence and (B) the presence of blocking peptide.

Requested From:

Japan

Laboratory Reagent For In Vitro Research Use Only

Not for resale without prior written consent from LifeSpan BioSciences, Inc.

Created on 9/24/2014

© 2014 LifeSpan BioSciences