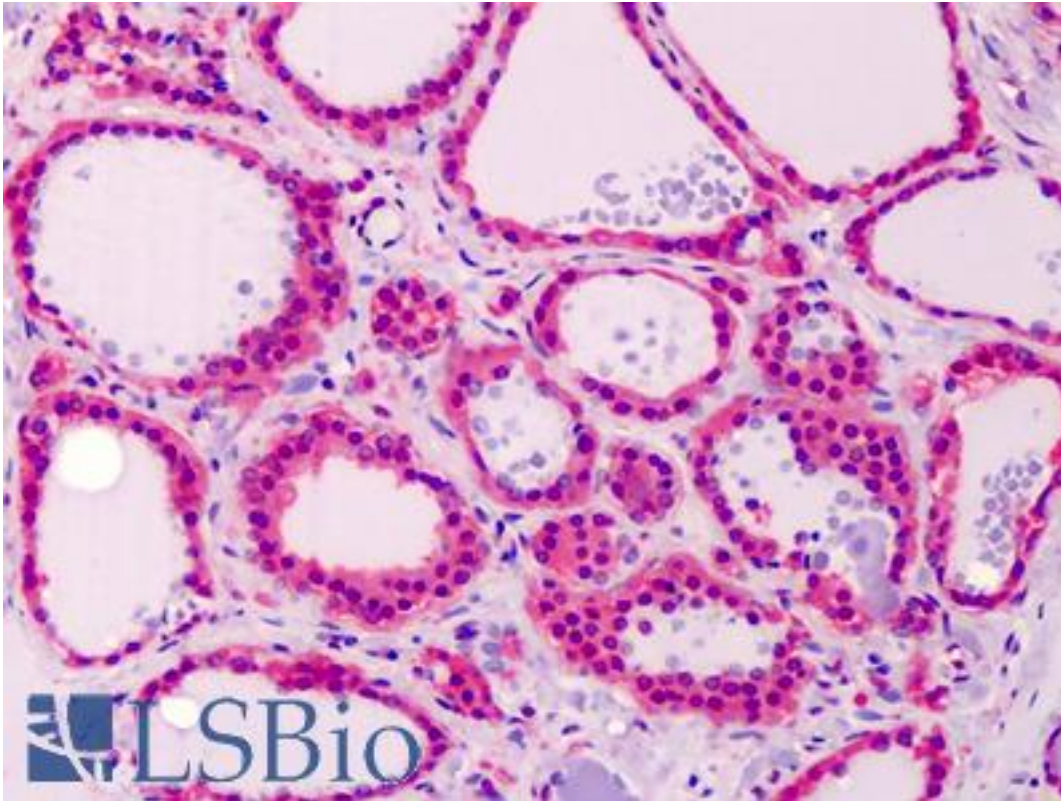


Calmodulin Mouse anti-Bovine Monoclonal (C-Terminus) Antibody - LS-B5031 - LSBio	
<b>CatalogID:</b>	LS-B5031
<b>Validation:</b>	This antibody replaces catalog number LS-C21106. It has been validated for use in the following assays: IHC-P.
<b>Target:</b>	Calmodulin
<b>Host</b>	Calmodulin antibody was produced in Mouse
<b>Clonality:</b>	Monoclonal
<b>Isotype:</b>	IgG1
<b>Immunogen Species:</b>	Calmodulin antibody was raised against Bovine
<b>Antigen Type:</b>	Synthetic peptide
<b>Immunogen:</b>	Calmodulin antibody was raised against synthetic peptide corresponding to the 21 carboxy-terminal amino acids of bovine calmodulin, conjugated with thyroglobulin.
<b>Specificity:</b>	Recognizes both Ca <sup>2+</sup> -bound and Ca <sup>2+</sup> -free calmodulin. Does not recognize bovine S100- alpha, S100-beta, troponin C or parvalbumin. Species cross-reactivity: rat, mouse, human, porcine and wheat germ. Wide cross-reactivity expected.
<b>Epitope:</b>	C-Terminus
<b>Reactivity:</b>	Bovine, Human, Mouse, Rat, Pig, Wheat
<b>Purification:</b>	Protein G purified
<b>Presentation:</b>	0.1 M Tris-glycine, pH 7.4, 0.15 M sodium chloride, 0.05% sodium azide.
<b>Recommended Storage:</b>	May be stored at 4°C for short-term only. Aliquot to avoid repeated freezing and thawing. Store at -20°C. Aliquots are stable for at least 12 months
<b>Usage Summary:</b>	Suitable for use in Western Blot, Immunoprecipitation and RIA. Proteins were visualized using a goat anti-mouse secondary antibody conjugated to HRP and a chemiluminescence detection system. Immunoprecipitation: 4 ug immunoprecipitates calmodulin from A431 RIPA cell lysate.
<b>Uses:</b>	IHC - Paraffin (5 µg/ml), Western blot, Immunoprecipitation, Radioimmunoassay (Optimal dilution to be determined by the researcher)
<b>Size:</b>	50 µg

**Immunohistochemistry Image:**



Anti-Calmodulin antibody IHC of human thyroid. Immunohistochemistry of formalin-fixed, paraffin-embedded tissue after heat-induced antigen retrieval. Antibody LS-B5031 concentration 5 ug/ml.

**Requested From:**

Japan

Laboratory Reagent For In Vitro Research Use Only

Not for resale without prior written consent from LifeSpan BioSciences, Inc.

Created on 9/24/2014

© 2014 LifeSpan BioSciences