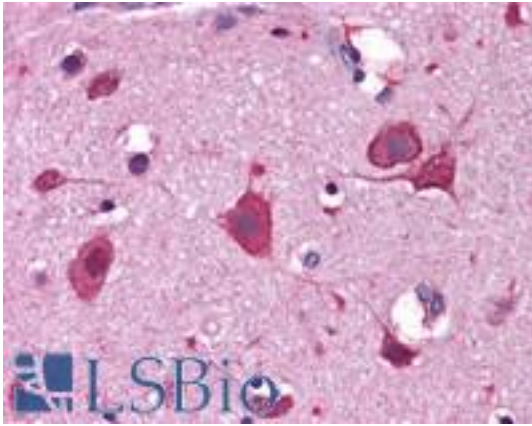


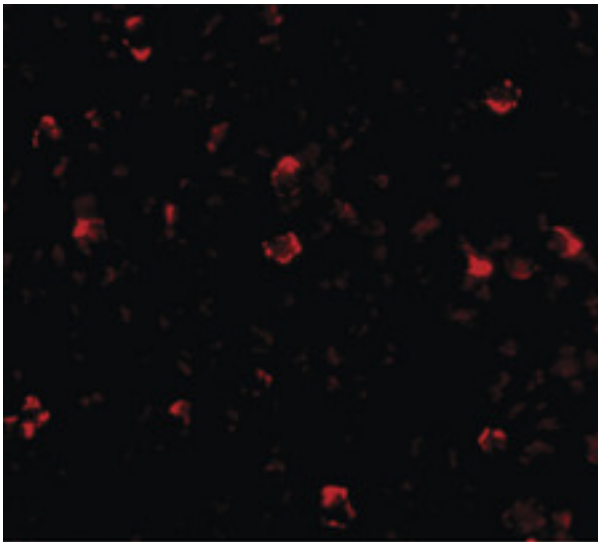
IRGC1 / CINEMA Rabbit anti-Human Polyclonal (C-Terminus) Antibody - LS-B5020 - LSBio	
CatalogID:	LS-B5020
Validation:	This antibody replaces catalog number LS-C108567. It has been validated for use in the following assays: IHC-P.
Target:	immunity-related GTPase family, cinema (IRGC)
Synonyms:	IRGC Antibody, CINEMA Antibody, ligp5 Antibody, IFGGE Antibody, Interferon inducible GTPase 5 Antibody, IRGC1 Antibody, Interferon-inducible GTPase 5 Antibody, R30953_1 Antibody
Host	IRGC antibody was produced in Rabbit
Clonality:	Polyclonal
Immunogen Species:	IRGC1 / CINEMA antibody was raised against Human
Antigen Type:	Synthetic peptide
Immunogen:	IRGC1 / CINEMA antibody was raised against a 12 amino acid peptide near the carboxy terminus of human IRGC.
Specificity:	Human IRGC
Epitope:	C-Terminus
Reactivity:	Human, Mouse, Rat
Purification:	Immunoaffinity purified
Presentation:	PBS, 0.02% sodium azide
Recommended Storage:	Short term 4°C, long term aliquot and store at -20°C, avoid freeze thaw cycles. Store undiluted.
Usage Summary:	IRGC antibody can be used for detection of IRGC by Western blot at 1-2 ug/ml.
Uses:	IHC - Paraffin (5 µg/ml), ICC, Western blot (1 - 2 µg/ml), ELISA (Optimal dilution to be determined by the researcher)
Size:	50 µg
Concentration:	1 mg/ml

Immunohistochemistry Image:



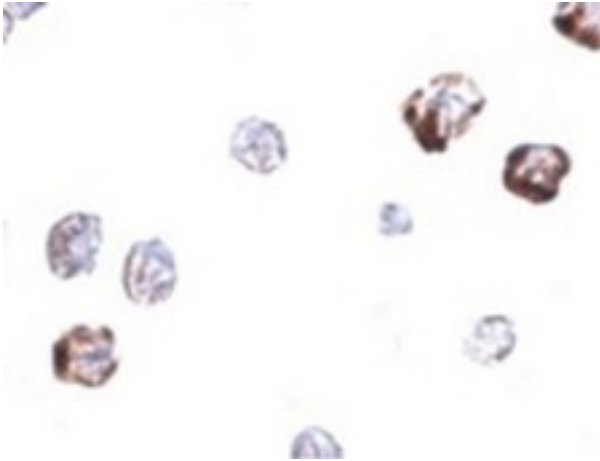
Anti-IRGC antibody IHC of human brain, cortex. Immunohistochemistry of formalin-fixed, paraffin-embedded tissue after heat-induced antigen retrieval. Antibody LS-B5020 concentration 5 ug/ml.

Immunofluorescence Image:



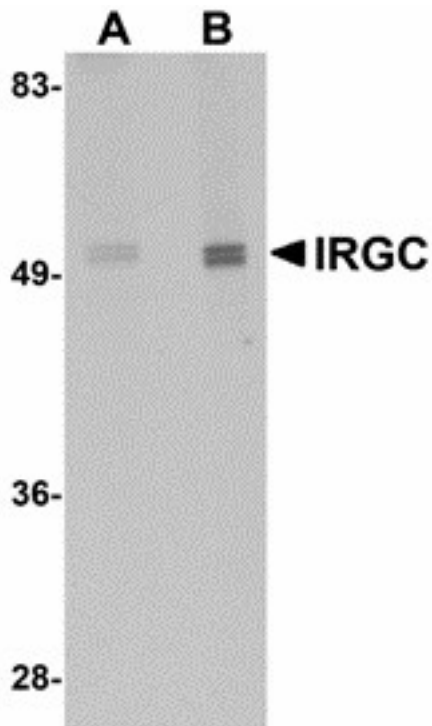
Immunofluorescence of IRGCb in A20 cells with IRGCb antibody at 20 ug/ml.

Immunocytochemistry Image:



Immunocytochemistry of IRGC in A20 cells with IRGC antibody at 2.5 ug/ml.

Western Blot Image:



Western blot of IRGC in mouse brain tissue lysate with IRGC antibody at (A) 1 and (B) 2 ug/ml.

Requested From:

Japan

Laboratory Reagent For In Vitro Research Use Only

Not for resale without prior written consent from LifeSpan BioSciences, Inc.

Created on 9/24/2014

© 2014 LifeSpan BioSciences