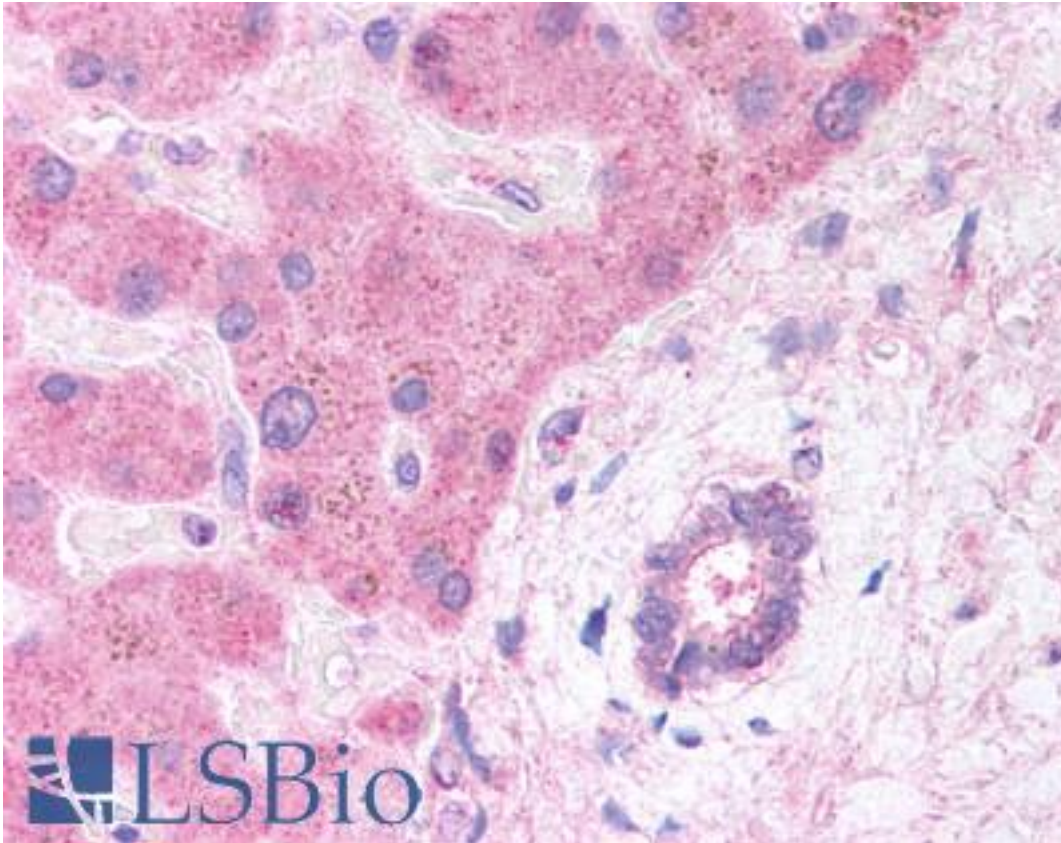


**LRP6 Goat anti-Human Polyclonal (Internal) Antibody - LS-B5 - LSBio**

<b>CatalogID:</b>	LS-B5
<b>Target:</b>	low density lipoprotein receptor-related protein 6 (LRP6)
<b>Synonyms:</b>	LRP6 Antibody, ADCAD2 Antibody, LRP-6 Antibody
<b>Host</b>	LRP6 antibody was produced in Goat
<b>Clonality:</b>	Polyclonal
<b>Immunogen Species:</b>	LRP6 antibody was raised against Human
<b>Antigen Type:</b>	Synthetic peptide
<b>Immunogen:</b>	LRP6 antibody was raised against synthetic peptide CMTSVATAKGYTSDL from an internal region of human LRP6 (NP_002327.2). Percent identity by BLAST analysis: Human, Gorilla, Gibbon, Monkey, Marmoset, Rat, Hamster, Panda, Dog, Horse, Rabbit, Pig (100%); Mouse, Elephant, Bovine, Bat (93%).
<b>Specificity:</b>	Human LRP6. This antibody is expected to recognise an epitope corresponding to aa 1546-1560 of human LRP6 protein.
<b>Epitope:</b>	Internal
<b>Reactivity:</b>	Human, Gorilla, Gibbon, Monkey, Rat, Dog, Hamster, Horse, Pig, Rabbit
<b>Predicted Reactivity:</b>	Mouse, Bat, Bovine
<b>Purification:</b>	Immunoaffinity purified
<b>Presentation:</b>	Tris-buffered saline, pH 7.3, 0.5% BSA, 0.02% sodium azide
<b>Recommended Storage:</b>	Store at -20°C. Minimize freezing and thawing.
<b>Usage Summary:</b>	Immunohistochemistry: LS-B5 was validated for use in immunohistochemistry on a panel of 21 formalin-fixed, paraffin-embedded (FFPE) human tissues after heat induced antigen retrieval in pH 6.0 citrate buffer. After incubation with the primary antibody, slides were incubated with biotinylated secondary antibody, followed by alkaline phosphatase-streptavidin and chromogen. The stained slides were evaluated by a pathologist to confirm staining specificity. The optimal working concentration for LS-B5 was determined to be 5 ug/ml.
<b>Uses:</b>	IHC - Paraffin (5 µg/ml), ELISA (1:64000) (Optimal dilution to be determined by the researcher)
<b>Size:</b>	50 µg
<b>Concentration:</b>	0.5 mg/ml

**Immunohistochemistry Image:**



Anti-LRP6 antibody IHC of human hepatocytes and bile duct. Immunohistochemistry of formalin-fixed, paraffin-embedded tissue after heat-induced antigen retrieval. Antibody LS-B5 concentration 5 ug/ml.

**Requested From:**

Japan

Laboratory Reagent For In Vitro Research Use Only

Not for resale without prior written consent from LifeSpan BioSciences, Inc.

Created on 9/24/2014

© 2014 LifeSpan BioSciences