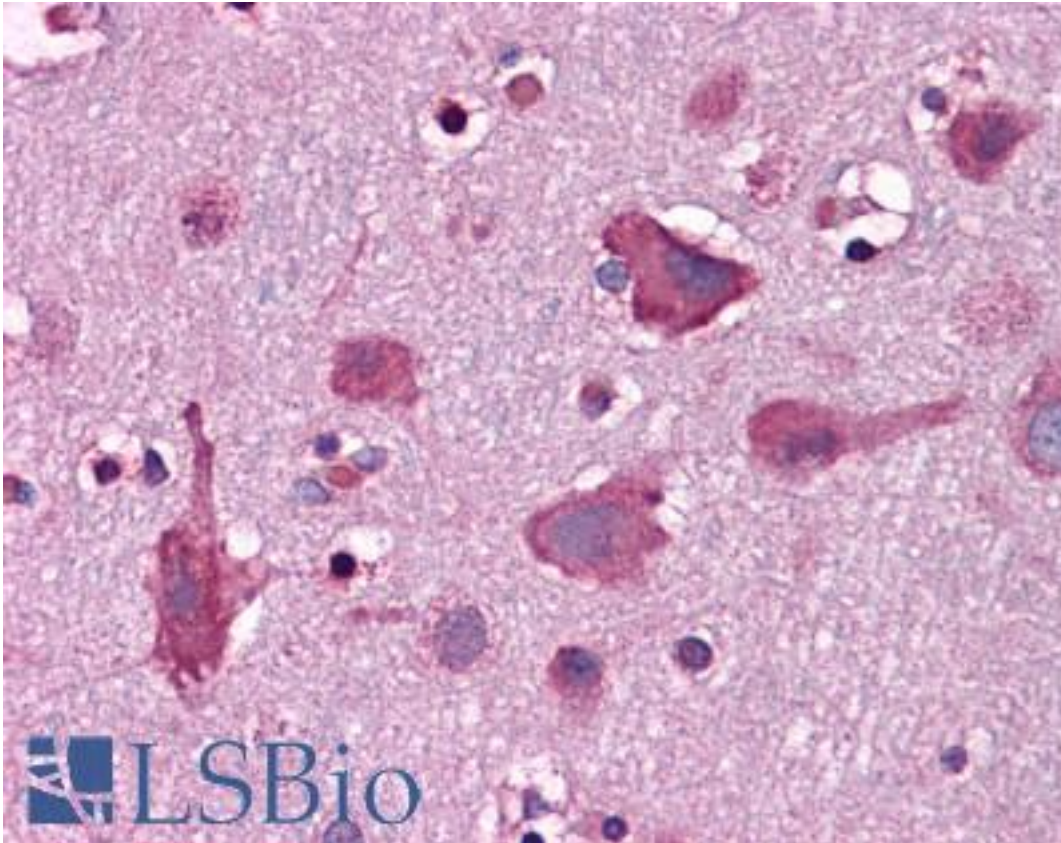


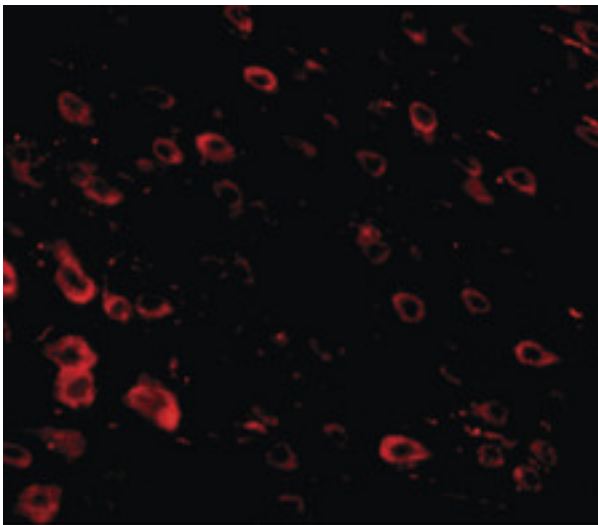
LRFN3 Rabbit anti-Human Polyclonal (Internal) Antibody - LS-B4994 - LSBio	
CatalogID:	LS-B4994
Validation:	This antibody replaces catalog number LS-C108476. It has been validated for use in the following assays: IHC-P.
Target:	leucine rich repeat and fibronectin type III domain containing 3 (LRFN3)
Synonyms:	LRFN3 Antibody, FIGLER1 Antibody, SALM4 Antibody
Host	LRFN3 antibody was produced in Rabbit
Clonality:	Polyclonal
Immunogen Species:	LRFN3 antibody was raised against Human
Antigen Type:	Synthetic peptide
Immunogen:	LRFN3 antibody was raised against a 16 amino acid peptide near the center of human LRFN3.
Specificity:	Human LRFN3
Epitope:	Internal
Reactivity:	Human, Mouse, Rat
Purification:	Immunoaffinity purified
Presentation:	PBS, 0.02% sodium azide
Recommended Storage:	Short term 4°C, long term aliquot and store at -20°C, avoid freeze thaw cycles. Store undiluted.
Usage Summary:	LRFN3 antibody can be used for detection of LRFN3 by Western blot at 1-2 ug/ml.
Uses:	IHC - Paraffin (5 µg/ml), Western blot (1 - 2 µg/ml), ELISA (Optimal dilution to be determined by the researcher)
Size:	50 µg
Concentration:	1 mg/ml

Immunohistochemistry Image:



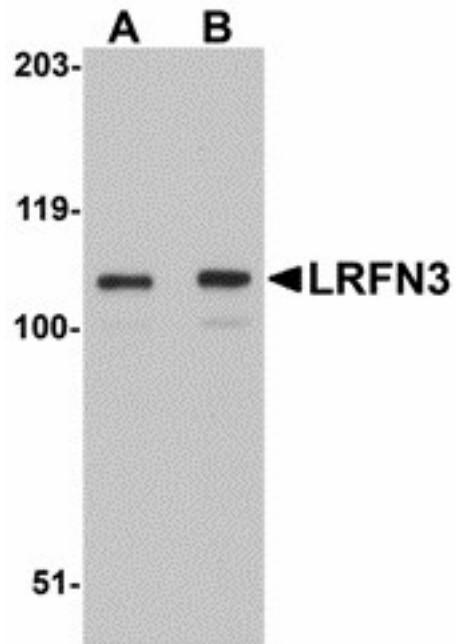
Anti-LRFN3 antibody IHC of human brain, cortex. Immunohistochemistry of formalin-fixed, paraffin-embedded tissue after heat-induced antigen retrieval. Antibody LS-B4994 concentration 5 ug/ml.

Immunofluorescence Image:



Immunofluorescence of LRFN3 in mouse brain tissue with LRFN3 antibody at 20 ug/ml.

Western Blot Image:



Western blot of LRFN3 in K562 lysate with LRFN3 antibody at (A) 1 and (B) 2 ug/ml.

Requested From:

Japan

Laboratory Reagent For In Vitro Research Use Only

Not for resale without prior written consent from LifeSpan BioSciences, Inc.

Created on 9/24/2014

© 2014 LifeSpan BioSciences