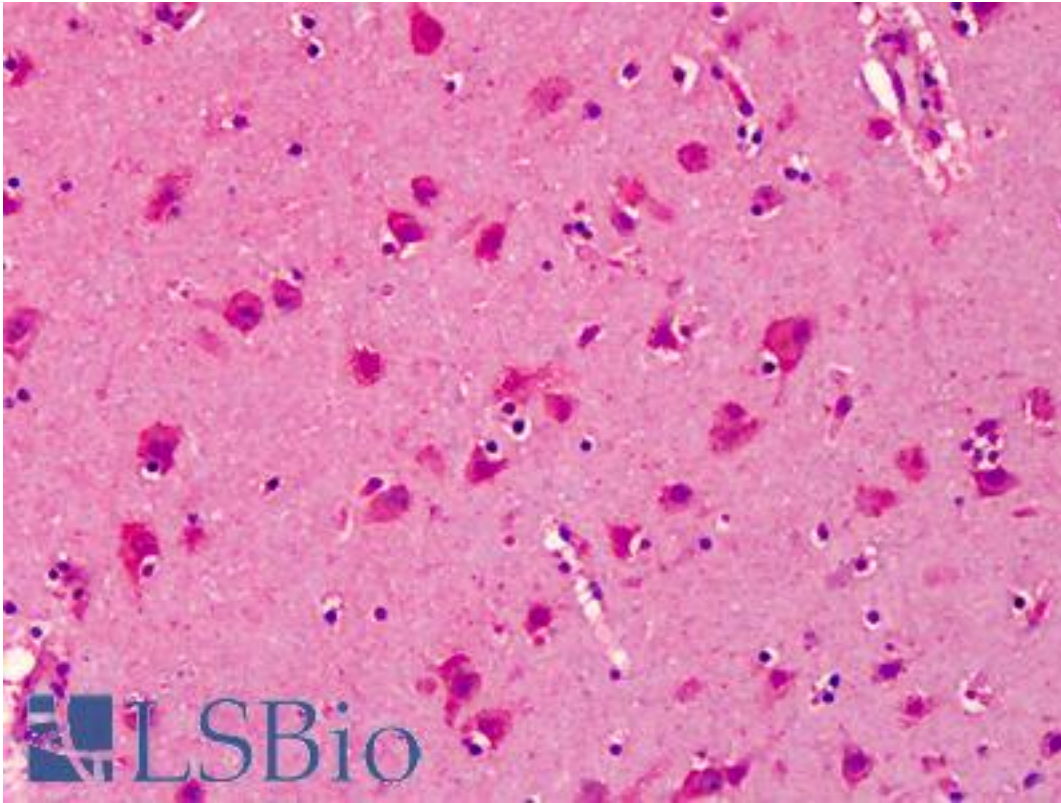


SNPH Rabbit anti-Human Polyclonal (N-Terminus) Antibody - LS-B4980 - LSBio

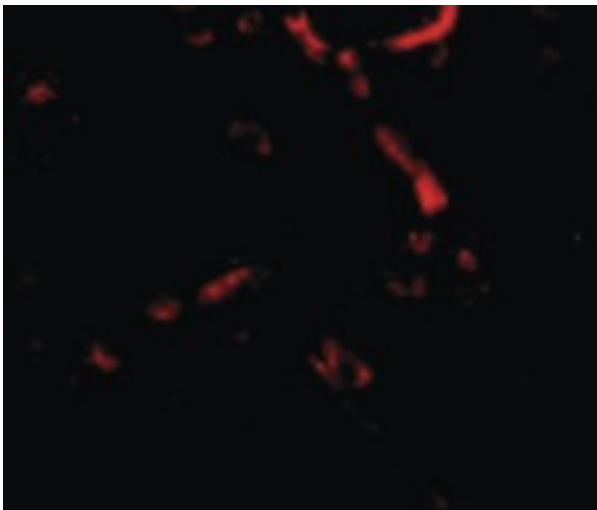
CatalogID:	LS-B4980
Validation:	This antibody replaces catalog number LS-C53306. It has been validated for use in the following assays: IHC-P.
Target:	syntaphilin (SNPH)
Synonyms:	SNPH Antibody, BA314N13.5 Antibody, KIAA0374 Antibody, Syntaphilin Antibody
Host	SNPH antibody was produced in Rabbit
Clonality:	Polyclonal
Immunogen Species:	SNPH antibody was raised against Human
Immunogen:	SNPH antibody was raised against 18 amino acid peptide from near the amino terminus of human Syntaphilin.
Epitope:	N-Terminus
Reactivity:	Human, Mouse, Rat
Purification:	Immunoaffinity purified
Presentation:	PBS, 0.02% sodium azide.
Recommended Storage:	Short term 4°C, long term aliquot and store at -20°C, avoid freeze thaw cycles. Store undiluted.
Uses:	IHC - Paraffin (5 µg/ml), Western blot (2 - 4 µg/ml) (Optimal dilution to be determined by the researcher)
Size:	50 µg
Concentration:	1 mg/ml

Immunohistochemistry Image:



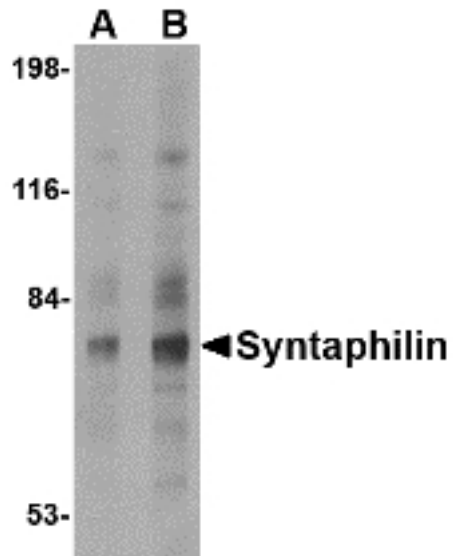
Anti-SNPH antibody IHC of human brain, cortex. Immunohistochemistry of formalin-fixed, paraffin-embedded tissue after heat-induced antigen retrieval. Antibody LS-B4980 concentration 5 ug/ml.

Immunofluorescence Image:



Immunofluorescence of Syntaphilin in Human Brain cells with Syntaphilin antibody at 20 ug/ml.

Western Blot Image:



Western blot of Syntaphilin in human brain tissue lysate with Syntaphilin antibody at (A) 2 and (B) 4 ug/ml.

Requested From:

Japan

Laboratory Reagent For In Vitro Research Use Only

Not for resale without prior written consent from LifeSpan BioSciences, Inc.

Created on 9/24/2014

© 2014 LifeSpan BioSciences