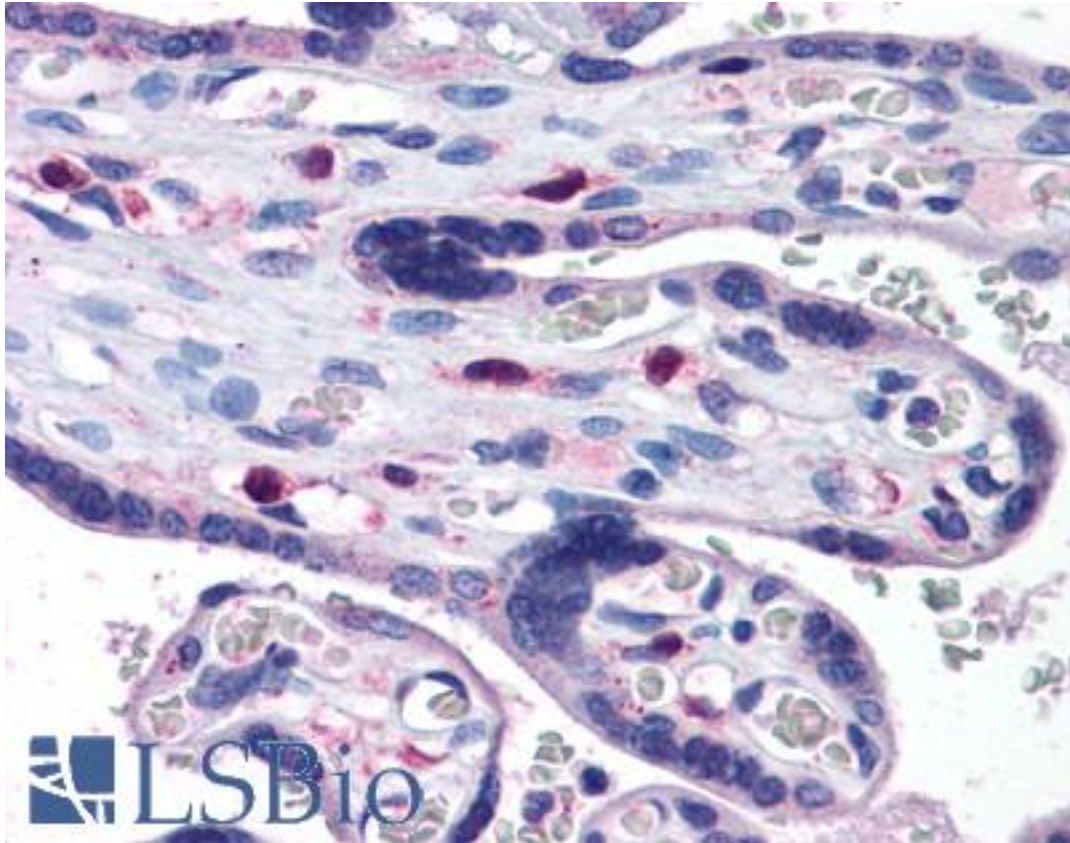


SNX16 Goat anti-Human Polyclonal (N-Terminus) Antibody - LS-B4965 - LSBio

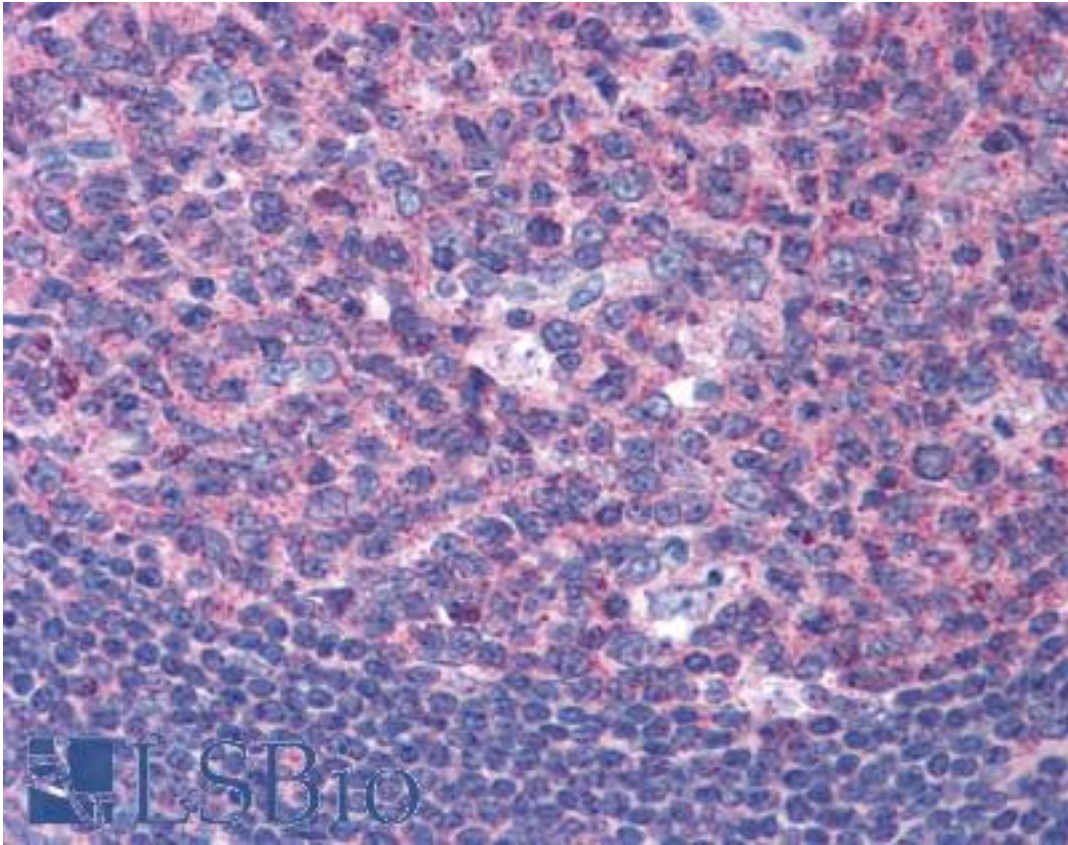
CatalogID:	LS-B4965
Validation:	This antibody replaces catalog number LS-C55500. It has been validated for use in the following assays: IHC-P.
Target:	sorting nexin 16 (SNX16)
Synonyms:	SNX16 Antibody, Sorting nexin 16 Antibody, Sorting nexin-16 Antibody
Host	SNX16 antibody was produced in Goat
Clonality:	Polyclonal
Immunogen Species:	SNX16 antibody was raised against Human
Antigen Type:	Synthetic peptide
Immunogen:	SNX16 antibody was raised against synthetic peptide ATPYVPVPMPIGN-C from the N-terminus of human SNX16 (NP_071416.2; NP_690049.1; NP_690050.1). Percent identity by BLAST analysis: Human, Gorilla, Orangutan, Gibbon, Monkey, Marmoset, Mouse, Rat, Hamster, Elephant, Panda, Dog, Horse, Rabbit (100%); Bovine, Bat, Pig (92%); Opossum, Chicken, Platypus, Lizard (85%).
Specificity:	Human SNX16. This antibody is expected to recognise both isoform a (NP_071416.2; NP_690049.1) and isoform b (NP_690050.1).
Epitope:	N-Terminus
Reactivity:	Human, Gorilla, Orangutan, Gibbon, Monkey, Mouse, Rat, Dog, Hamster, Horse, Rabbit
Predicted Reactivity:	Bat, Bovine, Pig
Purification:	Immunoaffinity purified
Presentation:	Tris-buffered saline, pH 7.3, 0.5% BSA, 0.02% sodium azide
Recommended Storage:	Store at -20°C. Minimize freezing and thawing.
Uses:	IHC - Paraffin (3.75 µg/ml), Western blot (1:64000) & (0.05 - 0.2 µg/ml), ELISA (1:64000) (Optimal dilution to be determined by the researcher)
Size:	50 µg
Concentration:	0.5 mg/ml

Immunohistochemistry Image:



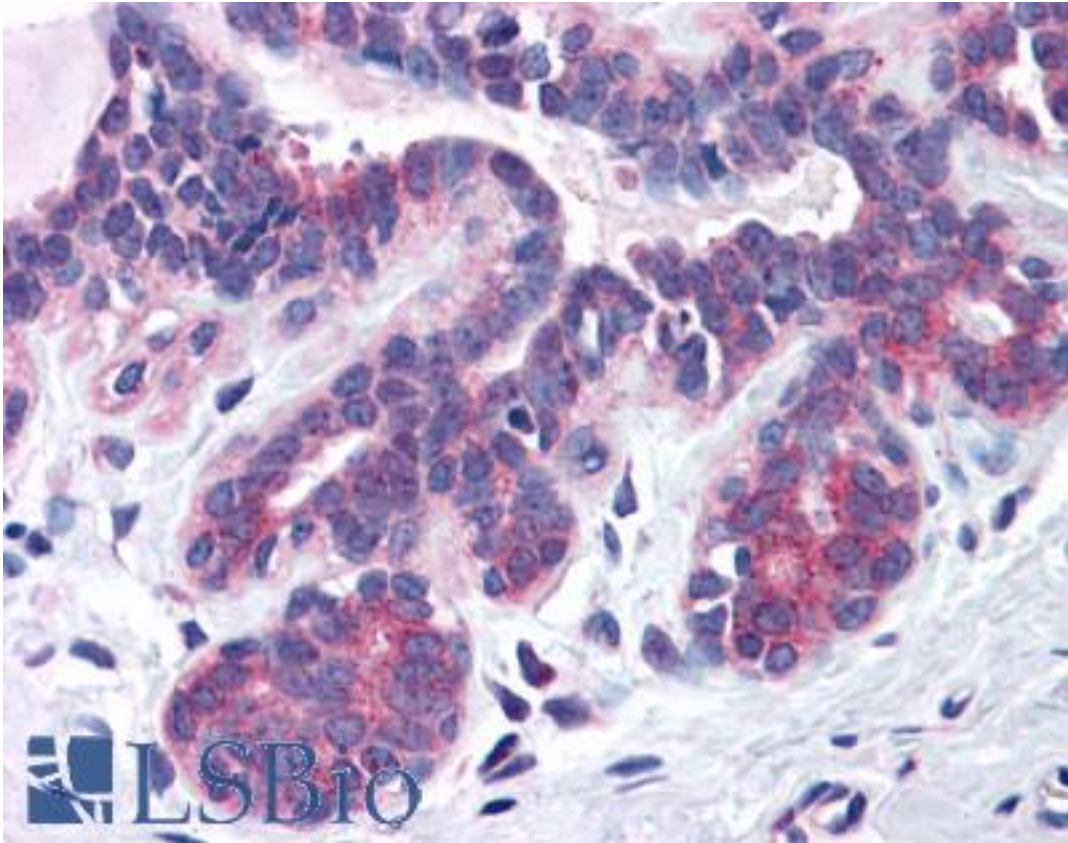
Anti-SNX16 antibody IHC of human placenta. Immunohistochemistry of formalin-fixed, paraffin-embedded tissue after heat-induced antigen retrieval. Antibody LS-B4965 concentration 3.75 ug/ml.

Immunohistochemistry Image:



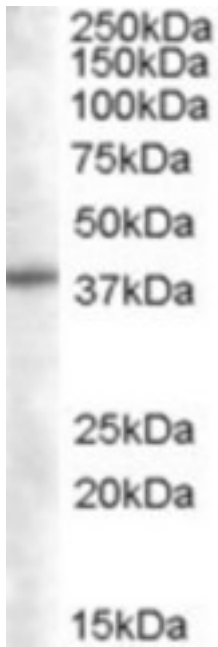
Anti-SNX16 antibody IHC of human tonsil. Immunohistochemistry of formalin-fixed, paraffin-embedded tissue after heat-induced antigen retrieval. Antibody LS-B4965 concentration 3.75 ug/ml.

Immunohistochemistry Image:



Anti-SNX16 antibody IHC of human breast. Immunohistochemistry of formalin-fixed, paraffin-embedded tissue after heat-induced antigen retrieval. Antibody LS-B4965 concentration 3.75 ug/ml.

Western Blot Image:



Antibody (0.05 ug/ml) staining of Daudi lysate (35 ug protein in RIPA buffer). Primary incubation was 1 hour. Detected by chemiluminescence.

Requested From:

Japan

Laboratory Reagent For In Vitro Research Use Only

Not for resale without prior written consent from LifeSpan BioSciences, Inc.

Created on 9/24/2014

© 2014 LifeSpan BioSciences