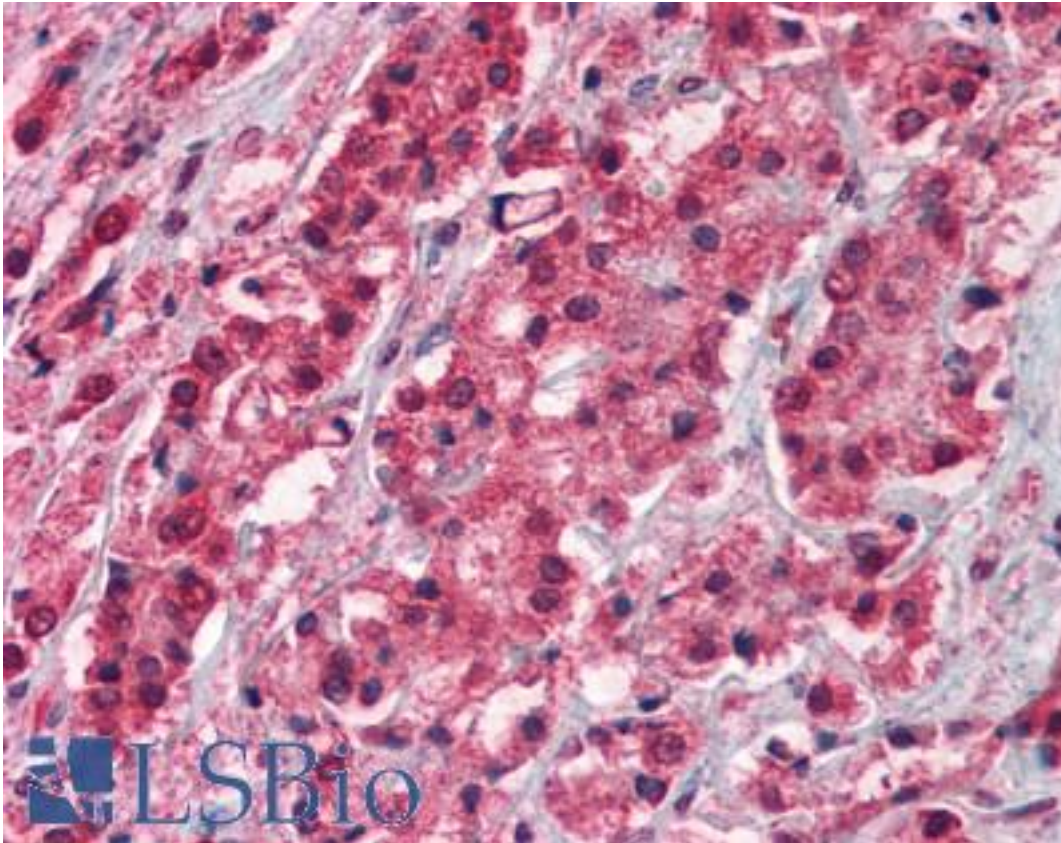


TRPM8 Rabbit anti-Human Polyclonal (aa278-292) Antibody - LS-B496 - LSBio

CatalogID:	LS-B496
Validation:	This antibody replaces catalog number LS-C2920. It has been validated for use in the following assays: IHC.
Target:	transient receptor potential cation channel, subfamily M, member 8 (TRPM8)
Synonyms:	TRPM8 Antibody, CMR1 Antibody, Cold-menthol receptor type 1 Antibody, LTrpC-6 Antibody, TRPP8 Antibody, Trp-p8 Antibody, LTRPC6 Antibody
Family / Subfamily:	Ion Channel / Calcium channel - TRP
Host	TRPM8 antibody was produced in Rabbit
Clonality:	Polyclonal
Immunogen Species:	TRPM8 antibody was raised against Human
Antigen Type:	Synthetic peptide
Immunogen:	TRPM8 antibody was raised against synthetic peptides made to residues 278-292 RNQLEKYISERTIQD and the C-terminus sequence NDLKGLLKEIANKIK of the human trp-p8 protein. Percent identity by BLAST analysis: Human, Gorilla, Baboon, Monkey, Marmoset, Panda, Bovine, Bat, Dog, Rabbit, Pig, Armadillo (100%); Gibbon, Mouse, Rat, Hamster, Elephant, Horse, Opossum, Platypus (93%); Galago, Guinea pig (80%).
Specificity:	Reacts with residues 278-292 and the C terminus sequence of the human trp-p8 protein.
Epitope:	aa278-292
Reactivity:	Human, Gorilla, Monkey, Bat, Bovine, Dog, Pig, Rabbit
Predicted Reactivity:	Gibbon, Mouse, Rat, Hamster, Horse
Purification:	Affinity purified
Presentation:	PBS, 0.02% sodium azide.
Recommended Storage:	Long term: -20°C; Short term: +4°C. Avoid repeat freeze-thaw cycles.
Usage Summary:	Immunohistochemistry: LS-B496 was validated for use in immunohistochemistry on a panel of 21 formalin-fixed, paraffin-embedded (FFPE) human tissues after heat induced antigen retrieval in pH 6.0 citrate buffer. After incubation with the primary antibody, slides were incubated with biotinylated secondary antibody, followed by alkaline phosphatase-streptavidin and chromogen. The stained slides were evaluated by a pathologist to confirm staining specificity. The optimal working concentration for LS-B496 was determined to be 5-10 ug/ml.
Uses:	IHC - Paraffin (5 - 10 µg/ml), Western blot (1:500 - 1:1000) (Optimal dilution to be determined by the researcher)
Size:	50 µl
Concentration:	1 mg/ml

Immunohistochemistry Image:



Anti-TRPM8 antibody IHC of human prostate cancer. Immunohistochemistry of formalin-fixed, paraffin-embedded tissue after heat-induced antigen retrieval. Antibody LS-B496 concentration 10 ug/ml.

Requested From:

Japan

Laboratory Reagent For In Vitro Research Use Only

Not for resale without prior written consent from LifeSpan BioSciences, Inc.

Created on 9/24/2014

© 2014 LifeSpan BioSciences