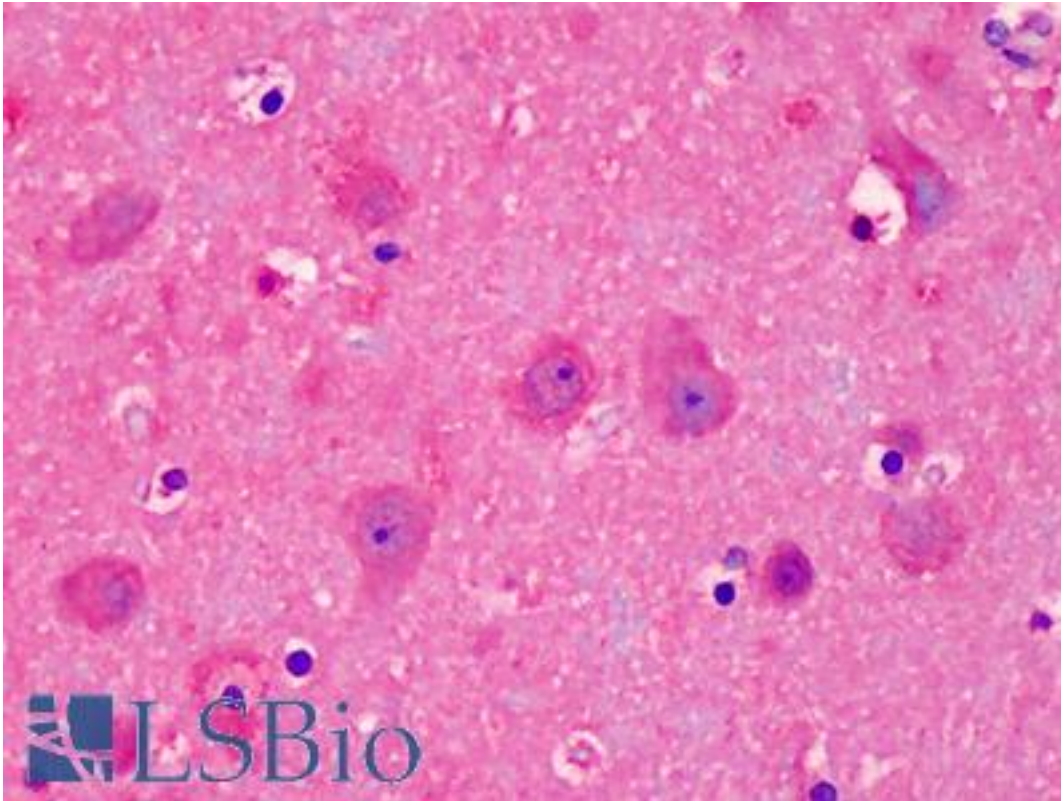


NEDD8 Mouse anti-Human Monoclonal (aa20-32) Antibody - LS-B4950 - LSBio

CatalogID:	LS-B4950
Validation:	This antibody replaces catalog number LS-C73210. It has been validated for use in the following assays: IHC-P.
Target:	neural precursor cell expressed, developmentally down-regulated 8 (NEDD8)
Synonyms:	NEDD8 Antibody, NEDD-8 Antibody, Neddylin Antibody, Ubiquitin-like protein Nedd8 Antibody
Host	NEDD8 antibody was produced in Mouse
Clonality:	Monoclonal
Isotype:	IgG2b
Immunogen Species:	NEDD8 antibody was raised against Human
Antigen Type:	Synthetic peptide
Immunogen:	NEDD8 antibody was raised against synthetic peptide corresponding to amino acids 20-32 of human Nedd8, conjugated to KLH.
Specificity:	Recognizes human Nedd8, but does not cross-react with human SUMO1 or human ubiquitin. Species cross-reactivity: This antibody is reactive against human. It has not been tested in other species.
Epitope:	aa20-32
Reactivity:	Human
Purification:	Purified
Presentation:	PBS, pH 7.4, 15 mM sodium azide.
Recommended Storage:	Short term 4°C, long term aliquot and store at -20°C, avoid freeze thaw cycles.
Usage Summary:	Suitable for use in ELISA, Western Blot and Immunohistochemistry.
Uses:	IHC - Paraffin (10 µg/ml), Western blot, ELISA (Optimal dilution to be determined by the researcher)
Size:	50 µl
Concentration:	2.6 mg/ml

Immunohistochemistry Image:



Anti-NEDD8 antibody IHC of human brain, cortex. Immunohistochemistry of formalin-fixed, paraffin-embedded tissue after heat-induced antigen retrieval. Antibody LS-B4950 concentration 10 ug/ml.

Requested From:

Japan

Laboratory Reagent For In Vitro Research Use Only

Not for resale without prior written consent from LifeSpan BioSciences, Inc.

Created on 9/24/2014

© 2014 LifeSpan BioSciences