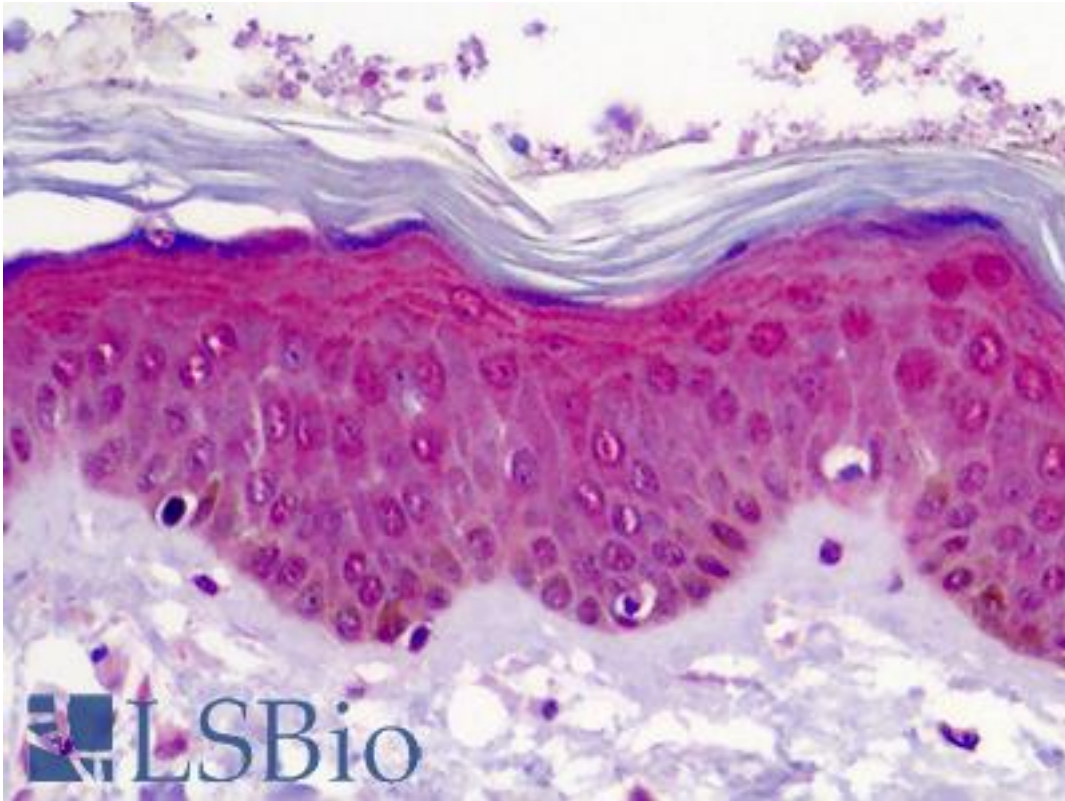


WNT3A Rabbit anti-Human Polyclonal Antibody - LS-B4946 - LSBio	
CatalogID:	LS-B4946
Validation:	This antibody replaces catalog number LS-C90508. It has been validated for use in the following assays: IHC-P.
Target:	wingless-type MMTV integration site family, member 3A (WNT3A)
Synonyms:	WNT3A Antibody, Protein Wnt-3a Antibody
Family / Subfamily:	WNT / not assigned-WNT
Host	WNT3A antibody was produced in Rabbit
Clonality:	Polyclonal
Immunogen Species:	WNT3A antibody was raised against Human
Antigen Type:	Synthetic peptide
Immunogen:	WNT3A antibody was raised against synthetic KLH-conjugated peptide directed against the central region of human, mouse and rat Wnt3A.
Specificity:	Recognizes human Wnt3a protein. Species cross-reactivity: Mouse, rat.
Reactivity:	Human, Mouse, Rat
Purification:	Immunoaffinity purified
Presentation:	PBS, pH 7.2, 0.05% sodium azide
Recommended Storage:	Short term 4°C, long term aliquot and store at -20°C, avoid freeze thaw cycles.
Usage Summary:	Suitable for use in Immunohistochemistry and Western Blot. Proteins were visualized using a IgG (HRP) donkey anti-rabbit and a chemiluminescence detection system.
Uses:	IHC - Paraffin (5 µg/ml), Western blot (1:1000) (Optimal dilution to be determined by the researcher)
Size:	50 µl
Concentration:	1 mg/ml

Immunohistochemistry Image:



Anti-WNT3A antibody IHC of human skin. Immunohistochemistry of formalin-fixed, paraffin-embedded tissue after heat-induced antigen retrieval. Antibody LS-B4946 concentration 5 ug/ml.

Requested From:

Japan

Laboratory Reagent For In Vitro Research Use Only

Not for resale without prior written consent from LifeSpan BioSciences, Inc.

Created on 9/24/2014

© 2014 LifeSpan BioSciences