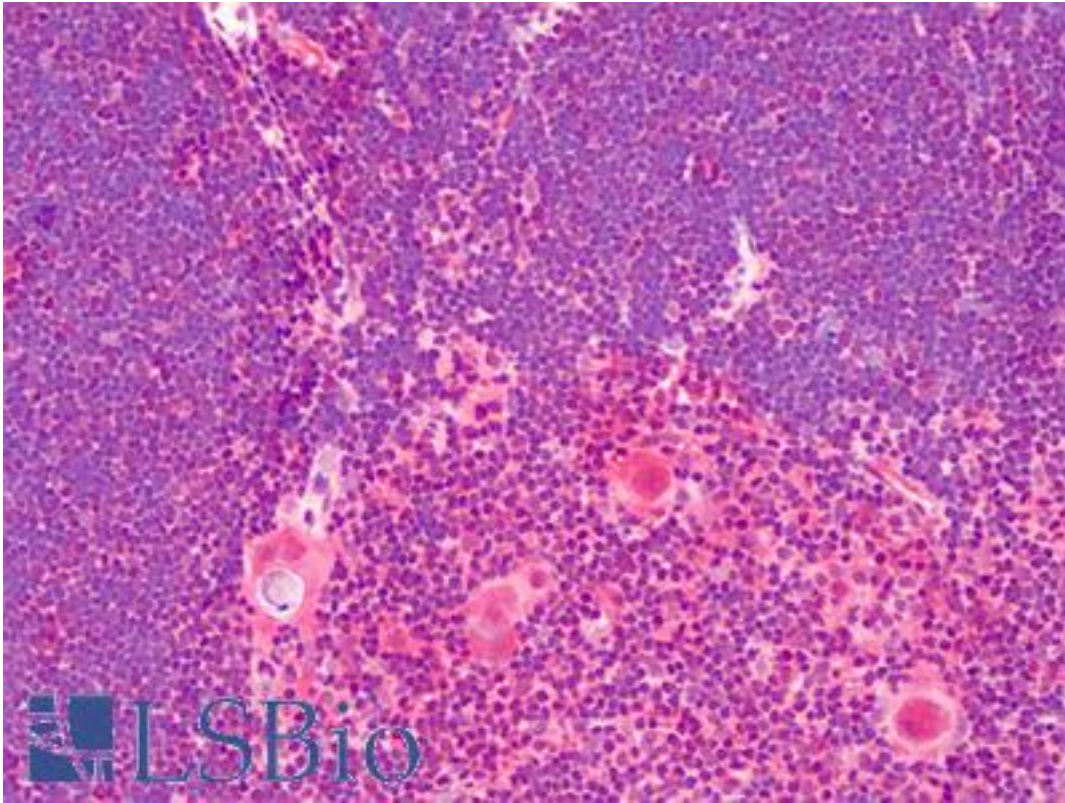


PRKD2 / PKD2 Rabbit anti-Human Polyclonal (aa850-865) Antibody - LS-B4944 - LSBio

<b>CatalogID:</b>	LS-B4944
<b>Validation:</b>	This antibody replaces catalog number LS-C26211. It has been validated for use in the following assays: IHC-P.
<b>Target:</b>	protein kinase D2 (PRKD2)
<b>Synonyms:</b>	PRKD2 Antibody, HSPC187 Antibody, NPKC-D2 Antibody, Protein kinase D2 Antibody, DKFZP586E0820 Antibody
<b>Family / Subfamily:</b>	Protein Kinase / PKD
<b>Host</b>	PRKD2 antibody was produced in Rabbit
<b>Clonality:</b>	Polyclonal
<b>Isotype:</b>	IgG
<b>Immunogen Species:</b>	PRKD2 / PKD2 antibody was raised against Human
<b>Antigen Type:</b>	Synthetic peptide - KLH conjugated
<b>Immunogen:</b>	PRKD2 / PKD2 antibody was raised against KLH-conjugated, synthetic peptide corresponding to aa850-865 (GLPTDRDLGGACPPQD) of human protein kinase D2 (PKD2). Percent identity by BLAST analysis: Human (100%); Gorilla, Monkey (88%); Dog (81%).
<b>Specificity:</b>	Recognizes human PKD2, Mr ~105kD.
<b>Epitope:</b>	aa850-865
<b>Reactivity:</b>	Human
<b>Purification:</b>	Immunoaffinity purified
<b>Presentation:</b>	0.2 M Tris-glycine, pH 7.4, 0.15 M sodium chloride, 0.05% sodium azide.
<b>Recommended Storage:</b>	May be stored at 4°C for short-term only. Aliquot to avoid repeated freezing and thawing. Store at -20°C. Aliquots are stable for at least 12 months
<b>Usage Summary:</b>	Western Blot Analysis: A 1:1000-1:10000 dilution of this lot detected PKD2 in RIPA lysates from HEK29 cells that had been stimulated with 50 ng/ml of PDBu for 10 minutes.
<b>Uses:</b>	IHC - Paraffin (1:100), Western blot (Optimal dilution to be determined by the researcher)
<b>Size:</b>	50 µl

**Immunohistochemistry Image:**



Anti-PRKD2 antibody IHC of human thymus. Immunohistochemistry of formalin-fixed, paraffin-embedded tissue after heat-induced antigen retrieval. Antibody LS-B4944 dilution 1:100.

**Requested From:**

Japan

Laboratory Reagent For In Vitro Research Use Only

Not for resale without prior written consent from LifeSpan BioSciences, Inc.

Created on 9/24/2014

© 2014 LifeSpan BioSciences