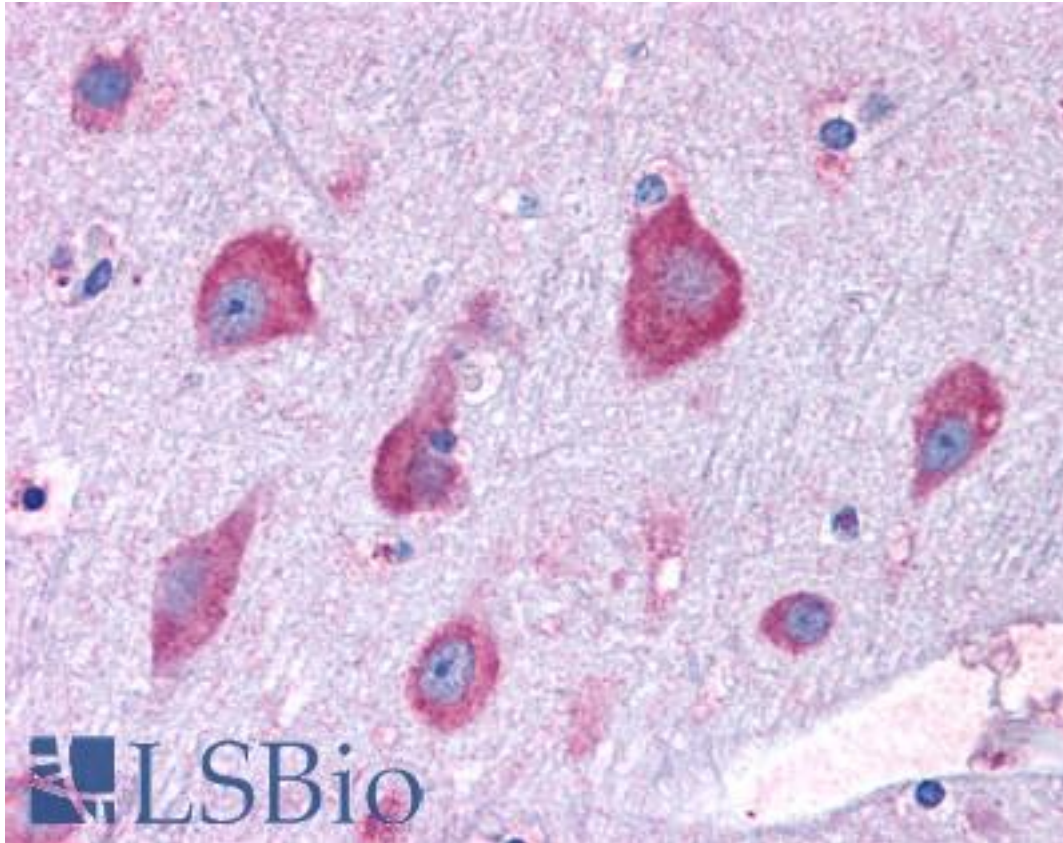


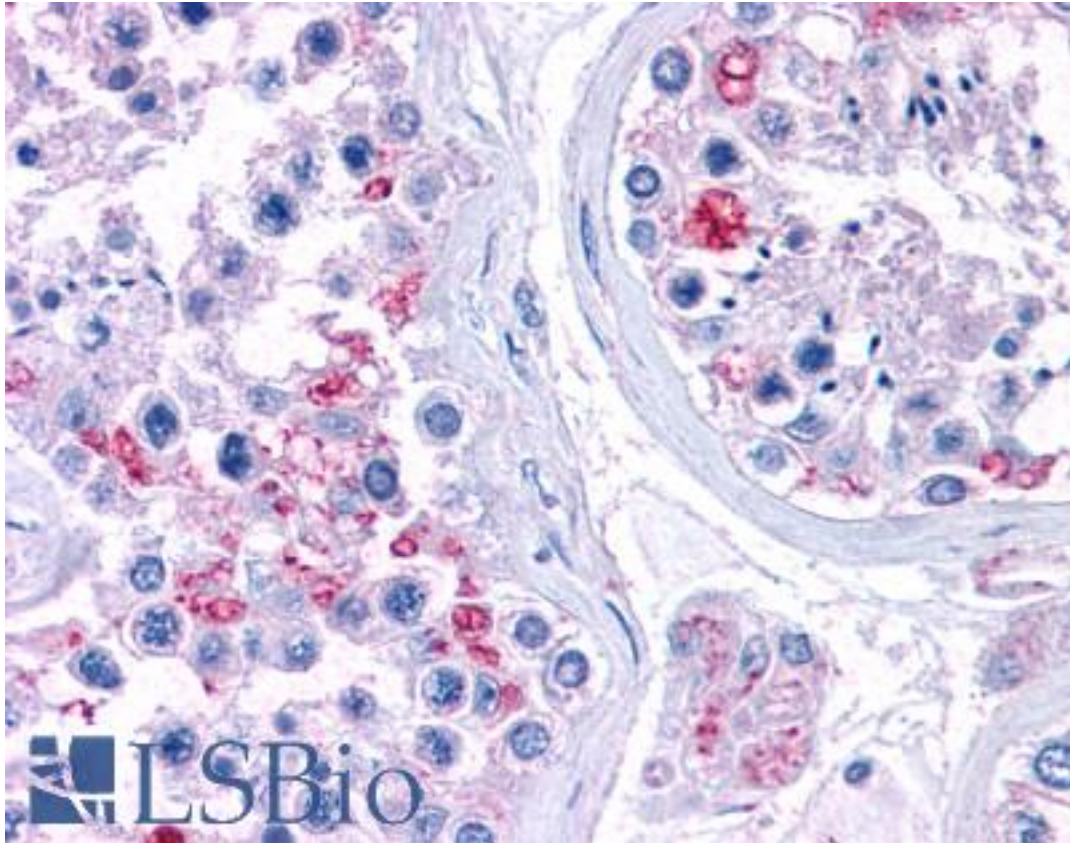
RPL22 / L22 Goat anti-Human Polyclonal (C-Terminus) Antibody - LS-B4941 - LSBio	
CatalogID:	LS-B4941
Validation:	This antibody replaces catalog number LS-C55393. It has been validated for use in the following assays: IHC-P.
Target:	ribosomal protein L22 (RPL22)
Synonyms:	RPL22 Antibody, 60S ribosomal protein L22 Antibody, EAP Antibody, EBER-associated protein Antibody, HBP15 Antibody, Heparin-binding protein 15 Antibody, Ribosomal protein L22 Antibody, Heparin-binding protein HBp15 Antibody, L22 Antibody
Host	RPL22 antibody was produced in Goat
Clonality:	Polyclonal
Immunogen Species:	RPL22 / L22 antibody was raised against Human
Antigen Type:	Synthetic peptide
Immunogen:	RPL22 / L22 antibody was raised against synthetic peptide C-SKESYELRYFQINQ from the C-terminus of human RPL22 (NP_000974.1). Percent identity by BLAST analysis: Human, Gorilla, Gibbon, Monkey, Marmoset, Mouse, Rat, Elephant, Bovine, Dog, Horse, Rabbit, Pig, Opossum, Turkey, Chicken, Platypus, Xenopus (100%); Panda, Seabass, Catfish, Salmon, Sablefish, Stickleback, Pike, Zebrafish (93%); Seq squirt, Eye worm, Nematode (86%).
Specificity:	Human RPL22.
Epitope:	C-Terminus
Reactivity:	Human, Gorilla, Gibbon, Monkey, Mouse, Rat, Bovine, Dog, Horse, Pig, Rabbit, Chicken, Xenopus
Predicted Reactivity:	Zebrafish
Purification:	Immunoaffinity purified
Presentation:	Tris-buffered saline, pH 7.3, 0.5% BSA, 0.02% sodium azide
Recommended Storage:	Store at -20°C. Minimize freezing and thawing.
Uses:	IHC - Paraffin (3.75 µg/ml), ELISA (1:16000) (Optimal dilution to be determined by the researcher)
Size:	50 µg
Concentration:	0.5 mg/ml

Immunohistochemistry Image:



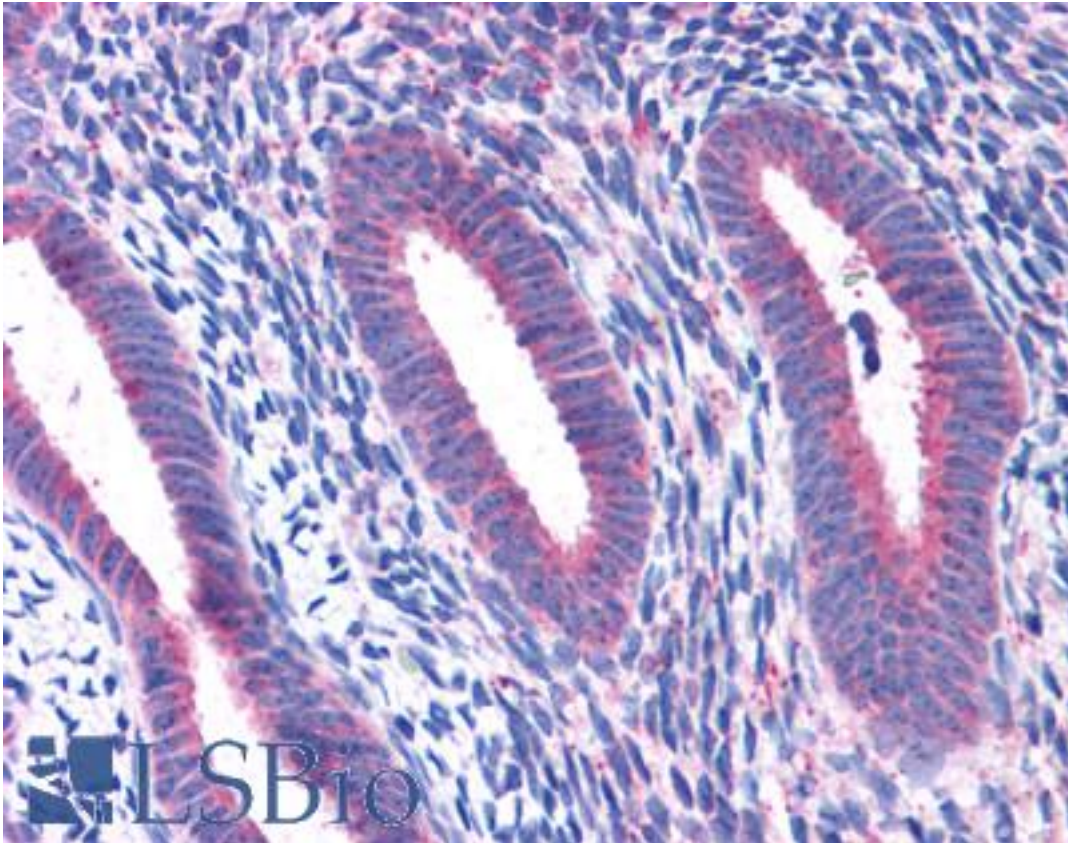
Anti-RPL22 antibody IHC of human brain, cortex. Immunohistochemistry of formalin-fixed, paraffin-embedded tissue after heat-induced antigen retrieval. Antibody LS-B4941 concentration 3.75 ug/ml.

Immunohistochemistry Image:



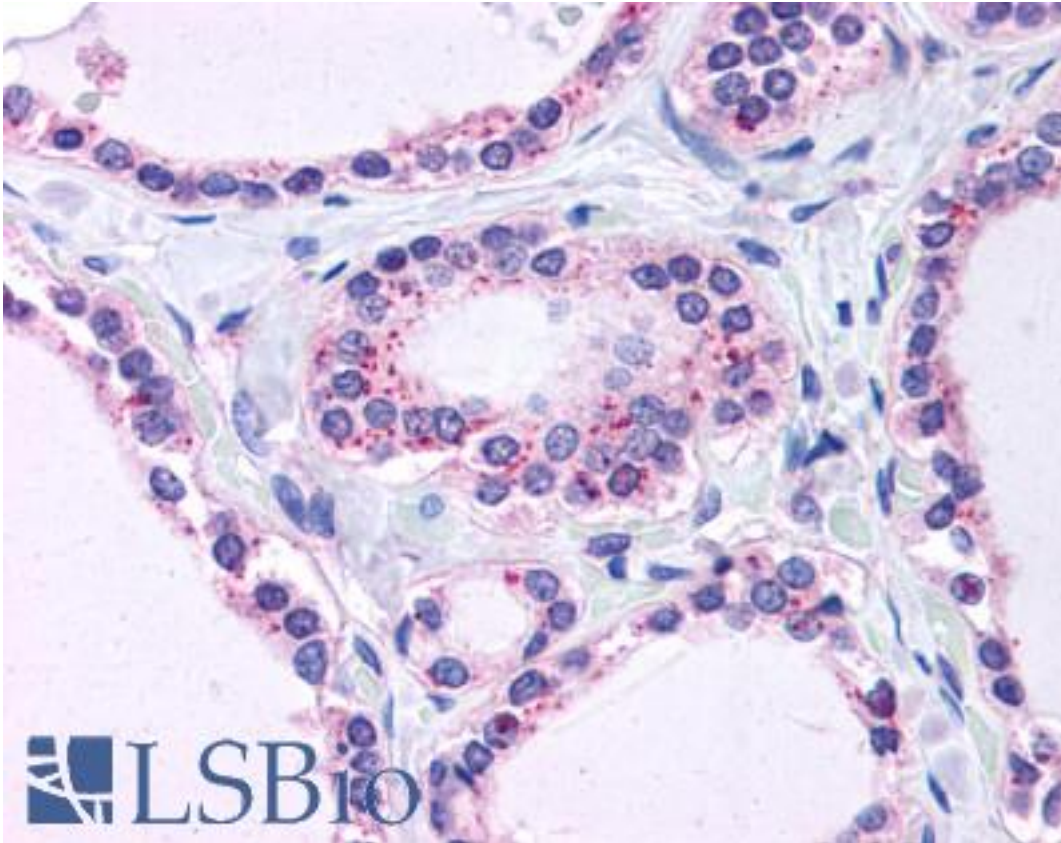
Anti-RPL22 antibody IHC of human testis. Immunohistochemistry of formalin-fixed, paraffin-embedded tissue after heat-induced antigen retrieval. Antibody LS-B4941 concentration 3.75 ug/ml.

Immunohistochemistry Image:



Anti-RPL22 antibody IHC of human uterus. Immunohistochemistry of formalin-fixed, paraffin-embedded tissue after heat-induced antigen retrieval. Antibody LS-B4941 concentration 3.75 ug/ml.

Immunohistochemistry Image:



Anti-RPL22 antibody IHC of human thyroid. Immunohistochemistry of formalin-fixed, paraffin-embedded tissue after heat-induced antigen retrieval. Antibody LS-B4941 concentration 3.75 ug/ml.

Requested From:

Japan

Laboratory Reagent For In Vitro Research Use Only

Not for resale without prior written consent from LifeSpan BioSciences, Inc.

Created on 9/24/2014

© 2014 LifeSpan BioSciences