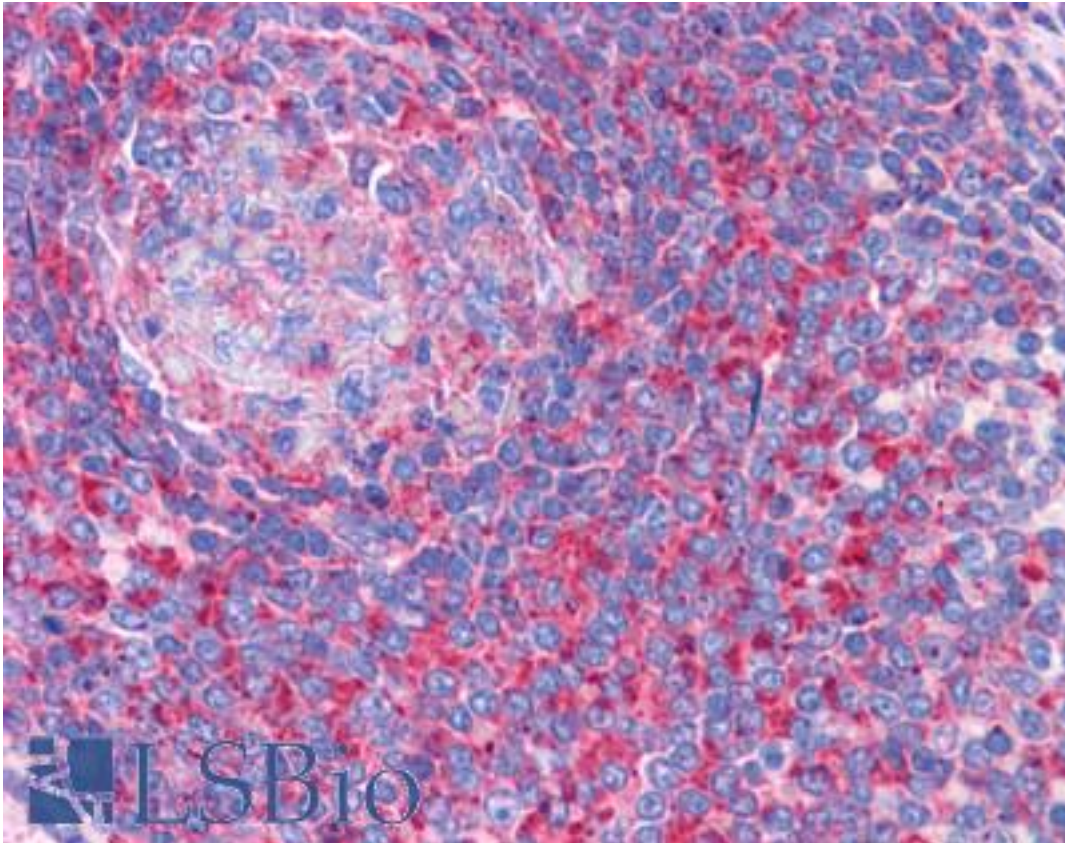


TPD52L2 / HD54 Goat anti-Human Polyclonal (C-Terminus) Antibody - LS-B4939 - LSBio

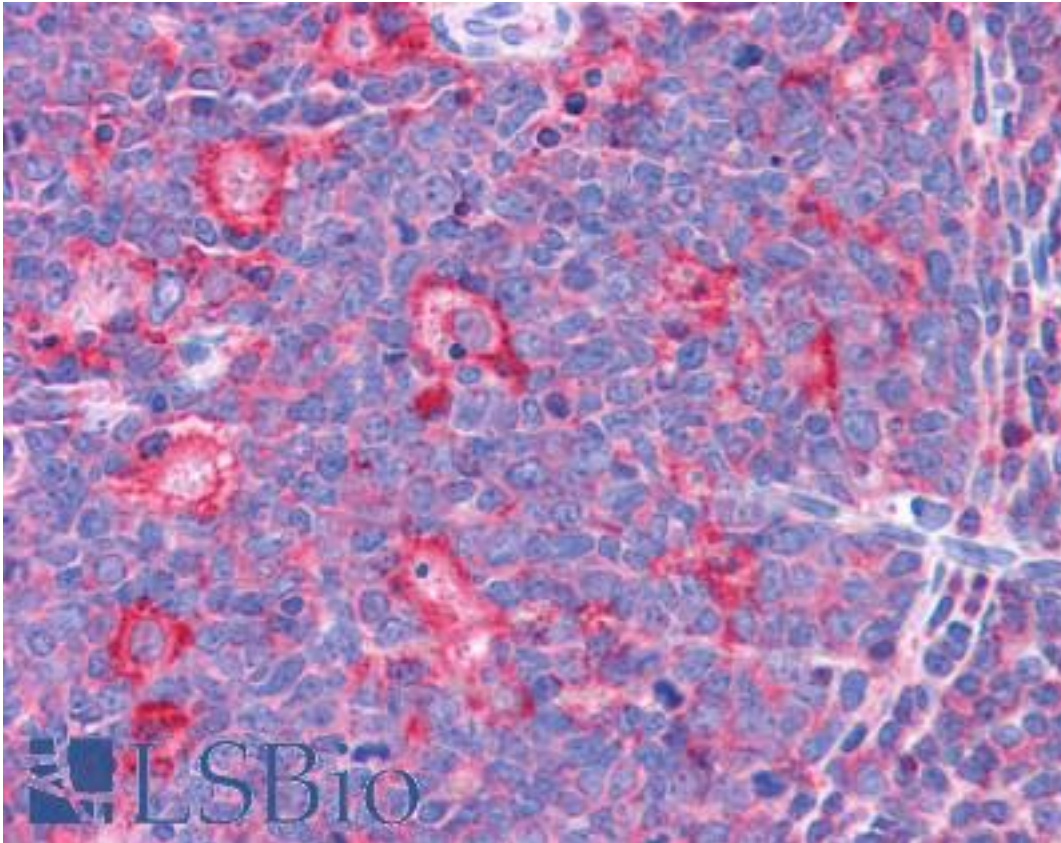
<b>CatalogID:</b>	LS-B4939
<b>Validation:</b>	This antibody replaces catalog number LS-C55606. It has been validated for use in the following assays: IHC-P.
<b>Target:</b>	tumor protein D52-like 2 (TPD52L2)
<b>Synonyms:</b>	TPD52L2 Antibody, D54 Antibody, HCCR-binding protein 2 Antibody, HD54 Antibody, Tumor protein D52-like 2 Antibody, Tumor protein D54 Antibody
<b>Host</b>	TPD52L2 antibody was produced in Goat
<b>Clonality:</b>	Polyclonal
<b>Immunogen Species:</b>	TPD52L2 / HD54 antibody was raised against Human
<b>Antigen Type:</b>	Synthetic peptide
<b>Immunogen:</b>	TPD52L2 / HD54 antibody was raised against synthetic peptide C-SGDKPLSDPAP from the C-terminus of human TPD52L2 (NP_955392.1; NP_955393.1; NP_955394.1; NP_955395.1; NP_003279.2; NP_955391.1). Percent identity by BLAST analysis: Human, Gorilla, Orangutan, Gibbon (100%); Marmoset (91%); Bat, Water flea (82%).
<b>Specificity:</b>	Human TPD52L2. This antibody is expected to recognise all reported isoforms (NP_955392.1; NP_955393.1; NP_955394.1; NP_955395.1; NP_003279.2; NP_955391.1).
<b>Epitope:</b>	C-Terminus
<b>Reactivity:</b>	Human, Gorilla, Orangutan, Gibbon
<b>Predicted Reactivity:</b>	Monkey
<b>Purification:</b>	Immunoaffinity purified
<b>Presentation:</b>	Tris-buffered saline, pH 7.3, 0.5% BSA, 0.02% sodium azide
<b>Recommended Storage:</b>	Store at -20°C. Minimize freezing and thawing.
<b>Uses:</b>	IHC - Paraffin (3.75 µg/ml), Western blot (1:16000) & (0.1 - 0.3 µg/ml), ELISA (1:16000) (Optimal dilution to be determined by the researcher)
<b>Size:</b>	50 µg
<b>Concentration:</b>	0.5 mg/ml

**Immunohistochemistry Image:**



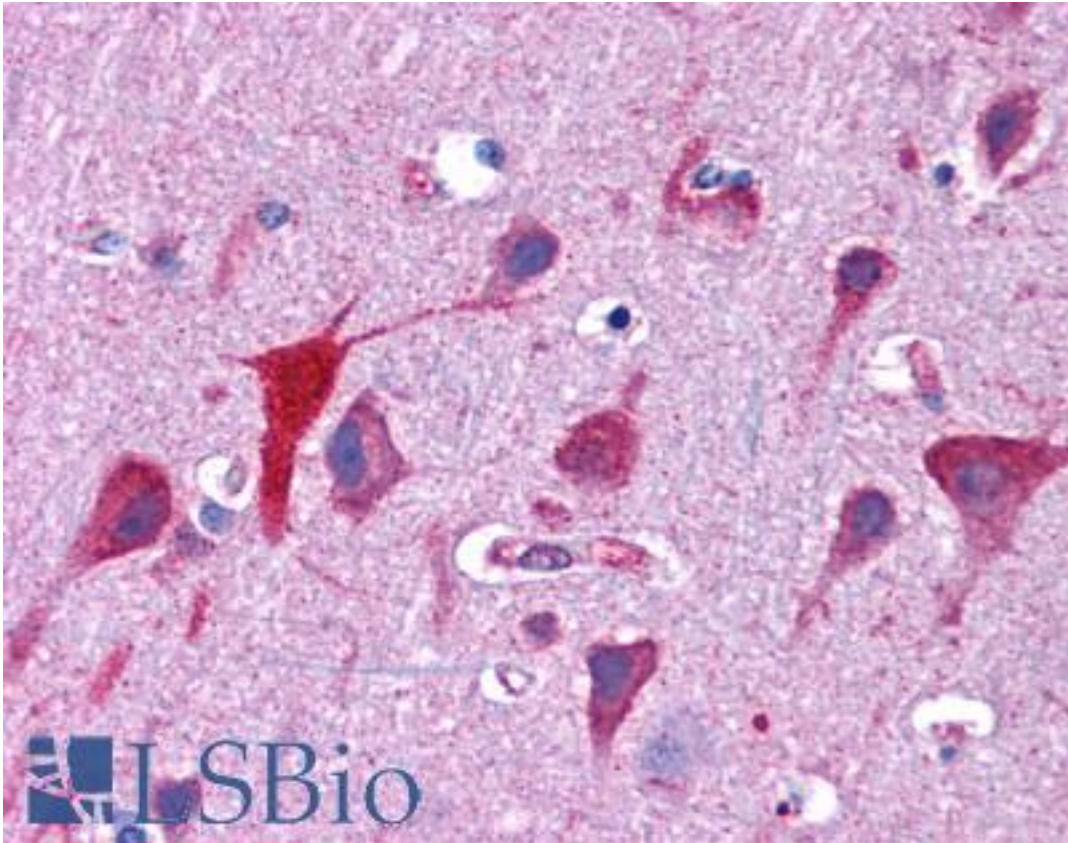
Anti-TPD52L2 antibody IHC of human spleen. Immunohistochemistry of formalin-fixed, paraffin-embedded tissue after heat-induced antigen retrieval. Antibody LS-B4939 concentration 3.75 ug/ml.

**Immunohistochemistry Image:**



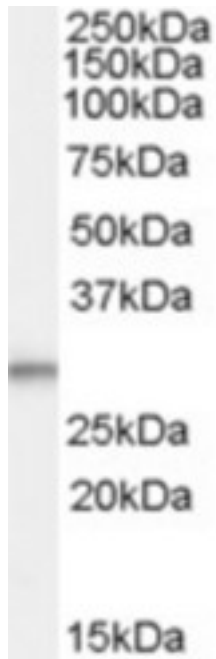
Anti-TPD52L2 antibody IHC of human tonsil. Immunohistochemistry of formalin-fixed, paraffin-embedded tissue after heat-induced antigen retrieval. Antibody LS-B4939 concentration 3.75 ug/ml.

**Immunohistochemistry Image:**



Anti-TPD52L2 antibody IHC of human brain, cortex. Immunohistochemistry of formalin-fixed, paraffin-embedded tissue after heat-induced antigen retrieval. Antibody LS-B4939 concentration 3.75 ug/ml.

**Western Blot Image:**



Antibody (0.1 ug/ml) staining of Human Breast Cancer lysate (35 ug protein in RIPA buffer).  
Primary incubation was 1 hour. Detected by chemiluminescence.

**Requested From:**

Japan

Laboratory Reagent For In Vitro Research Use Only

Not for resale without prior written consent from LifeSpan BioSciences, Inc.

Created on 9/24/2014

© 2014 LifeSpan BioSciences