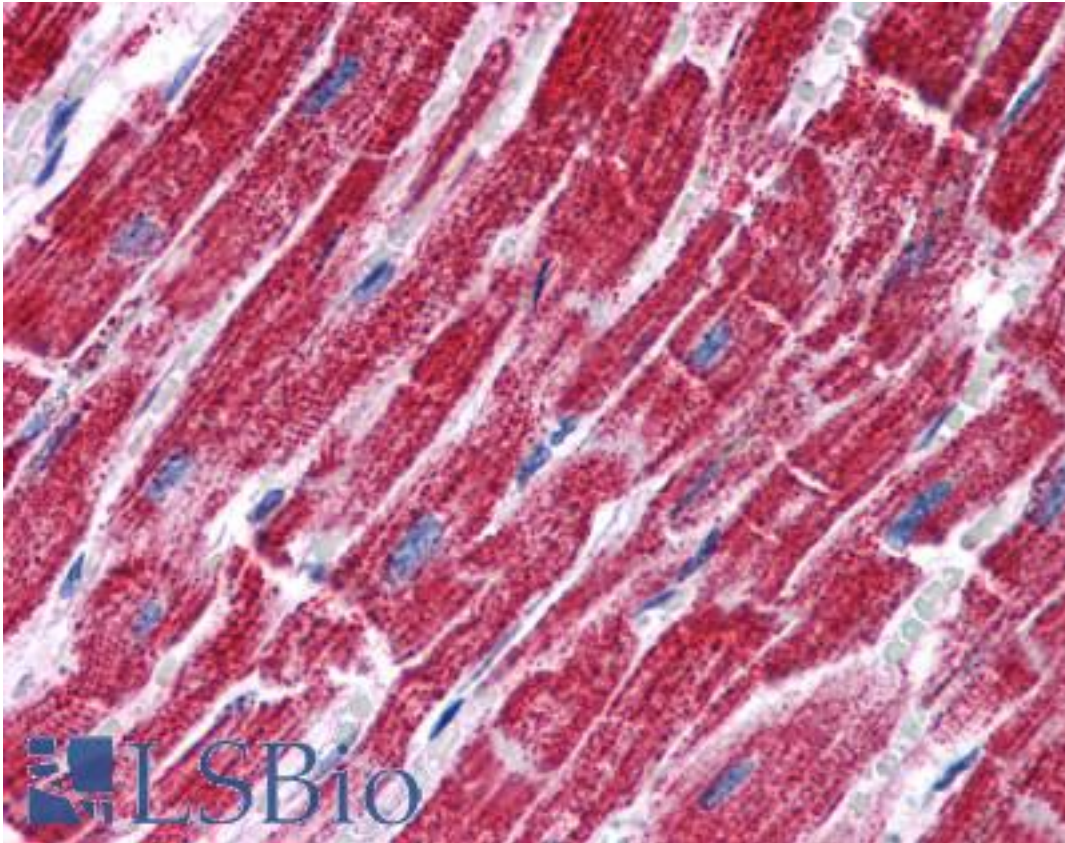


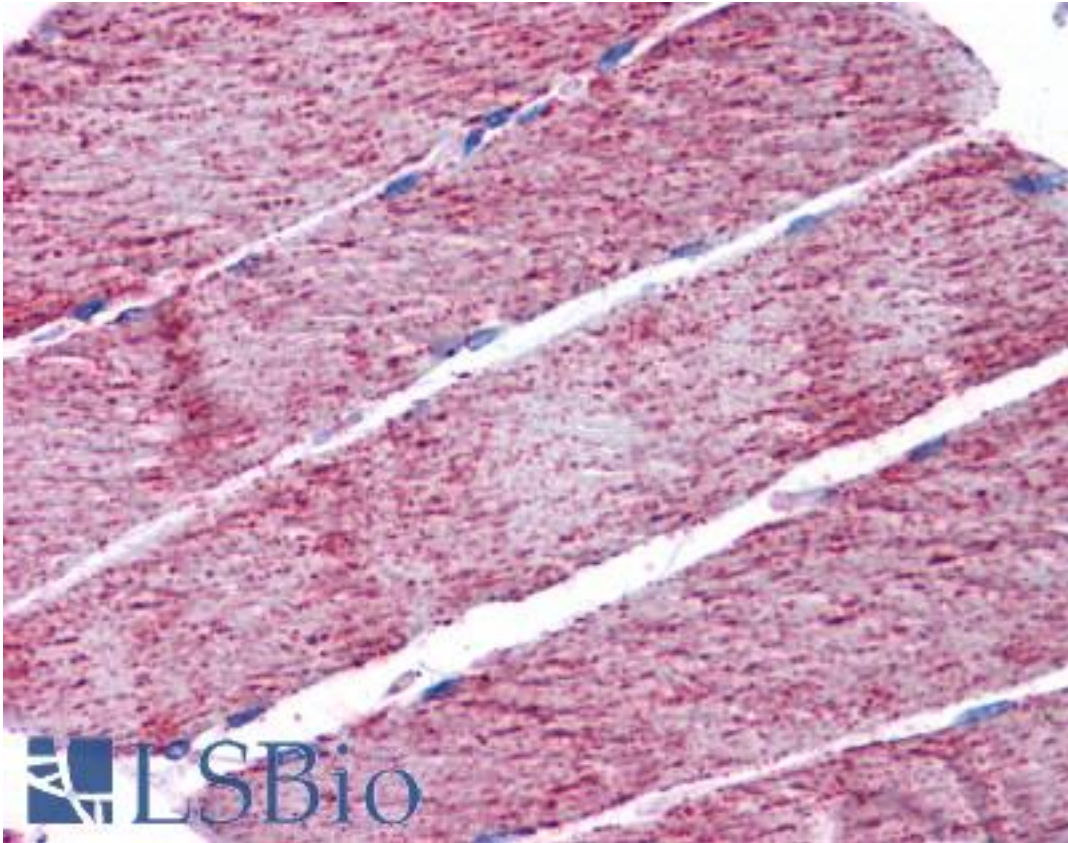
FH / Fumarase / MCL Goat anti-Human Polyclonal (Internal) Antibody - LS-B4937 - LSBio	
CatalogID:	LS-B4937
Validation:	This antibody replaces catalog number LS-C54884. It has been validated for use in the following assays: IHC-P.
Target:	fumarate hydratase (FH)
Synonyms:	FH Antibody, Fumarase Antibody, Fumarate hydratase Antibody, MCUL1 Antibody, HLRCC Antibody, LRCC Antibody, MCL Antibody
Host	FH antibody was produced in Goat
Clonality:	Polyclonal
Immunogen Species:	FH / Fumarase / MCL antibody was raised against Human
Antigen Type:	Synthetic peptide
Immunogen:	FH / Fumarase / MCL antibody was raised against synthetic peptide C-HPNDHVNKSQSSND from an internal region of human FH / Fumarate hydratase (NP_000134.2). Percent identity by BLAST analysis: Human, Gorilla, Orangutan, Gibbon, Monkey, Marmoset, Mouse, Rat, Sheep, Hamster, Elephant, Panda, Dog, Bovine, Horse, Pig, Opossum, Turkey, Chicken, Platypus, Lizard, Xenopus, Stickleback, Pufferfish, Zebrafish, Seq squirt, Drosophila, Mosquito, Water flea, Slime mold (100%).
Specificity:	Human FH / Fumarate hydratase.
Epitope:	Internal
Reactivity:	Human, Gorilla, Orangutan, Gibbon, Monkey, Mouse, Rat, Bovine, Dog, Hamster, Horse, Pig, Sheep, Chicken, Xenopus, Zebrafish, Drosophila, Insect
Purification:	Immunoaffinity purified
Presentation:	Tris-buffered saline, pH 7.3, 0.5% BSA, 0.02% sodium azide
Recommended Storage:	Store at -20°C. Minimize freezing and thawing.
Uses:	IHC - Paraffin (3.75 µg/ml), Western blot, ELISA (1:64000) (Optimal dilution to be determined by the researcher)
Size:	50 µg
Concentration:	0.5 mg/ml

Immunohistochemistry Image:



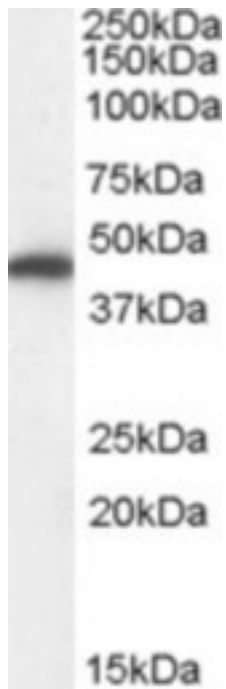
Anti-FH / Fumarase antibody IHC of human heart. Immunohistochemistry of formalin-fixed, paraffin-embedded tissue after heat-induced antigen retrieval. Antibody LS-B4937 concentration 3.75 ug/ml.

Immunohistochemistry Image:



Anti-FH / Fumarase antibody IHC of human skeletal muscle. Immunohistochemistry of formalin-fixed, paraffin-embedded tissue after heat-induced antigen retrieval. Antibody LS-B4937 concentration 3.75 ug/ml.

Western Blot Image:



Antibody (0.01 ug/ml) staining of Human Kidney lysate (35 ug protein in RIPA buffer). Primary incubation was 1 hour. Detected by chemiluminescence.

Requested From:

Japan

Laboratory Reagent For In Vitro Research Use Only

Not for resale without prior written consent from LifeSpan BioSciences, Inc.

Created on 9/24/2014

© 2014 LifeSpan BioSciences