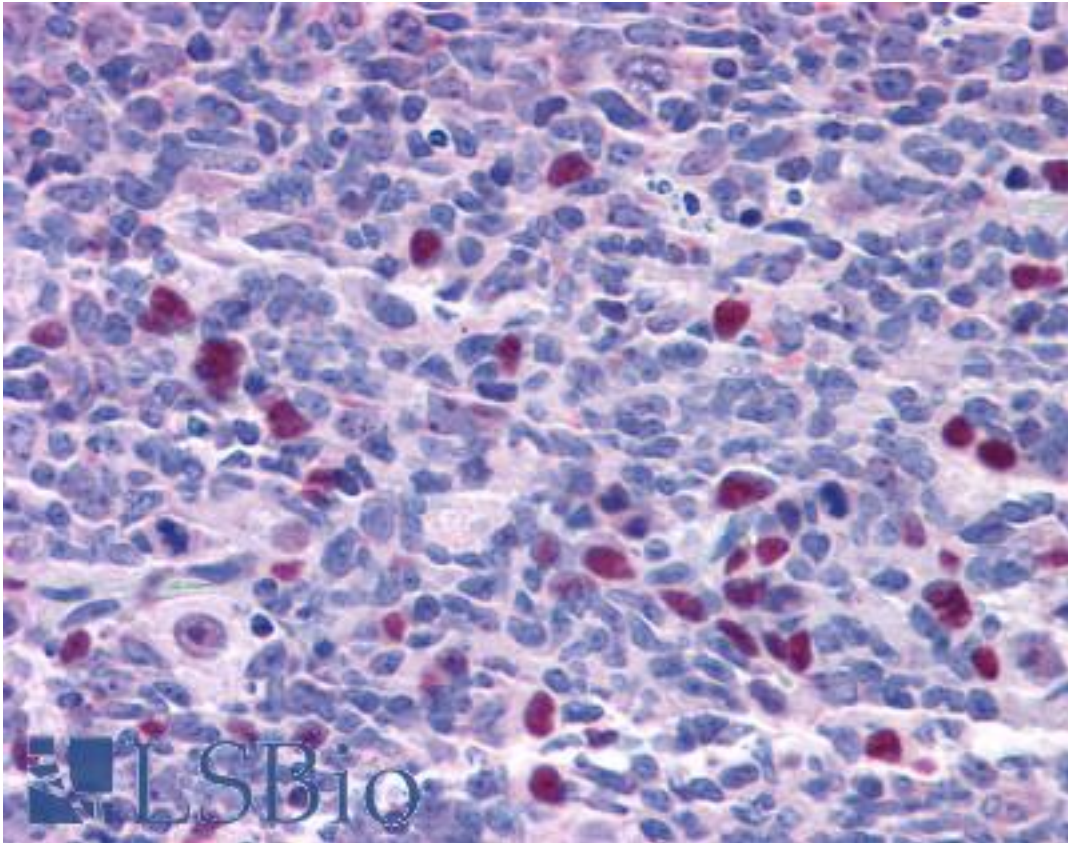


**NAT10 Goat anti-Human Polyclonal (Internal) Antibody - LS-B4935 - LSBio**

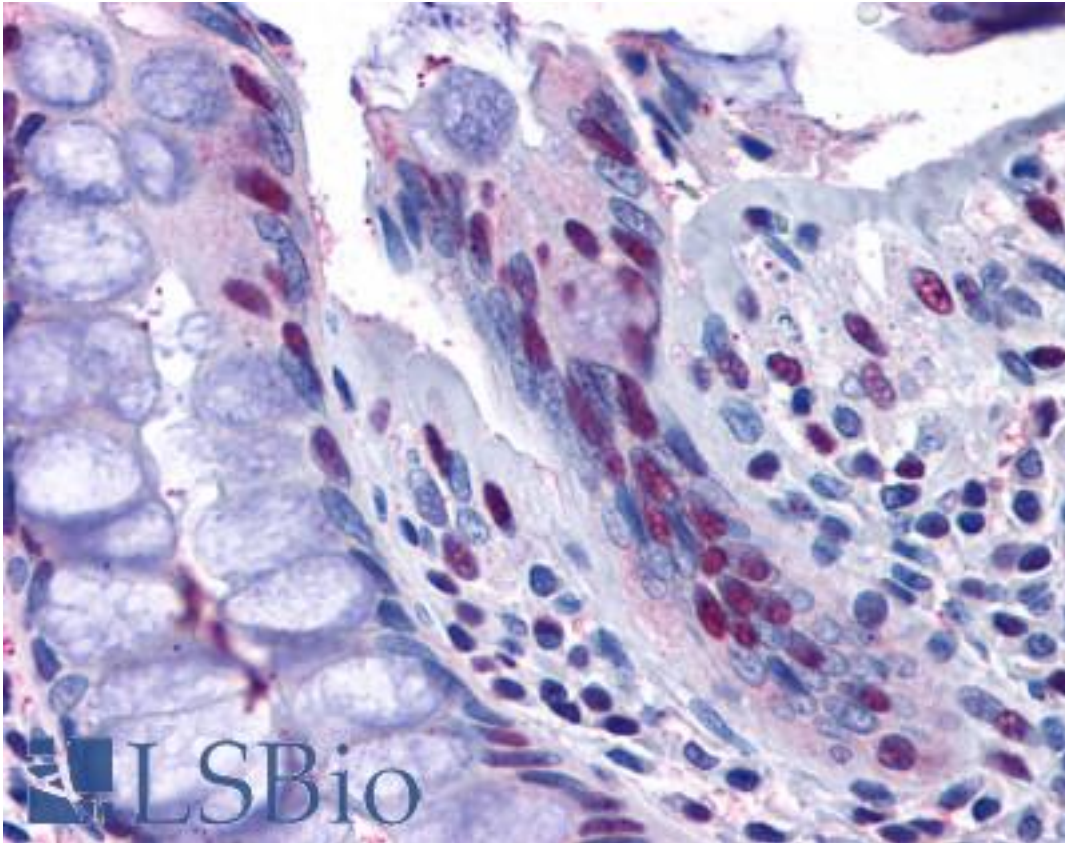
<b>CatalogID:</b>	LS-B4935
<b>Validation:</b>	This antibody replaces catalog number LS-C55146. It has been validated for use in the following assays: IHC-P.
<b>Target:</b>	N-acetyltransferase 10 (GCN5-related) (NAT10)
<b>Synonyms:</b>	NAT10 Antibody, ALP Antibody, HALP Antibody, KIAA1709 Antibody, N-acetyltransferase 10 Antibody, NET43 Antibody
<b>Host</b>	NAT10 antibody was produced in Goat
<b>Clonality:</b>	Polyclonal
<b>Immunogen Species:</b>	NAT10 antibody was raised against Human
<b>Antigen Type:</b>	Synthetic peptide
<b>Immunogen:</b>	NAT10 antibody was raised against synthetic peptide C-KSDKKKRLEAKQ from an internal region (near the C-terminus) of human NAT10 (NP_078938.1). Percent identity by BLAST analysis: Human, Gorilla, Gibbon, Monkey, Marmoset, Elephant, Dog, Bat (100%); Mouse, Rat, Hamster, Bovine, Horse, Pig (92%); Opossum, Slime mold, Tunicate (83%).
<b>Specificity:</b>	Human NAT10.
<b>Epitope:</b>	Internal
<b>Reactivity:</b>	Human, Gorilla, Gibbon, Monkey, Bat, Dog
<b>Predicted Reactivity:</b>	Mouse, Rat, Bovine, Hamster, Horse, Pig
<b>Purification:</b>	Immunoaffinity purified
<b>Presentation:</b>	Tris-buffered saline, pH 7.3, 0.5% BSA, 0.02% sodium azide
<b>Recommended Storage:</b>	Store at -20°C. Minimize freezing and thawing.
<b>Uses:</b>	IHC - Paraffin (3.75 µg/ml), ELISA (1:64000) (Optimal dilution to be determined by the researcher)
<b>Size:</b>	50 µg
<b>Concentration:</b>	0.5 mg/ml

**Immunohistochemistry Image:**



Anti-NAT10 antibody IHC of human tonsil. Immunohistochemistry of formalin-fixed, paraffin-embedded tissue after heat-induced antigen retrieval. Antibody LS-B4935 concentration 3.75 ug/ml.

**Immunohistochemistry Image:**



Anti-NAT10 antibody IHC of human colon. Immunohistochemistry of formalin-fixed, paraffin-embedded tissue after heat-induced antigen retrieval. Antibody LS-B4935 concentration 3.75 ug/ml.

**Requested From:**

Japan

Laboratory Reagent For In Vitro Research Use Only

Not for resale without prior written consent from LifeSpan BioSciences, Inc.

Created on 9/24/2014

© 2014 LifeSpan BioSciences