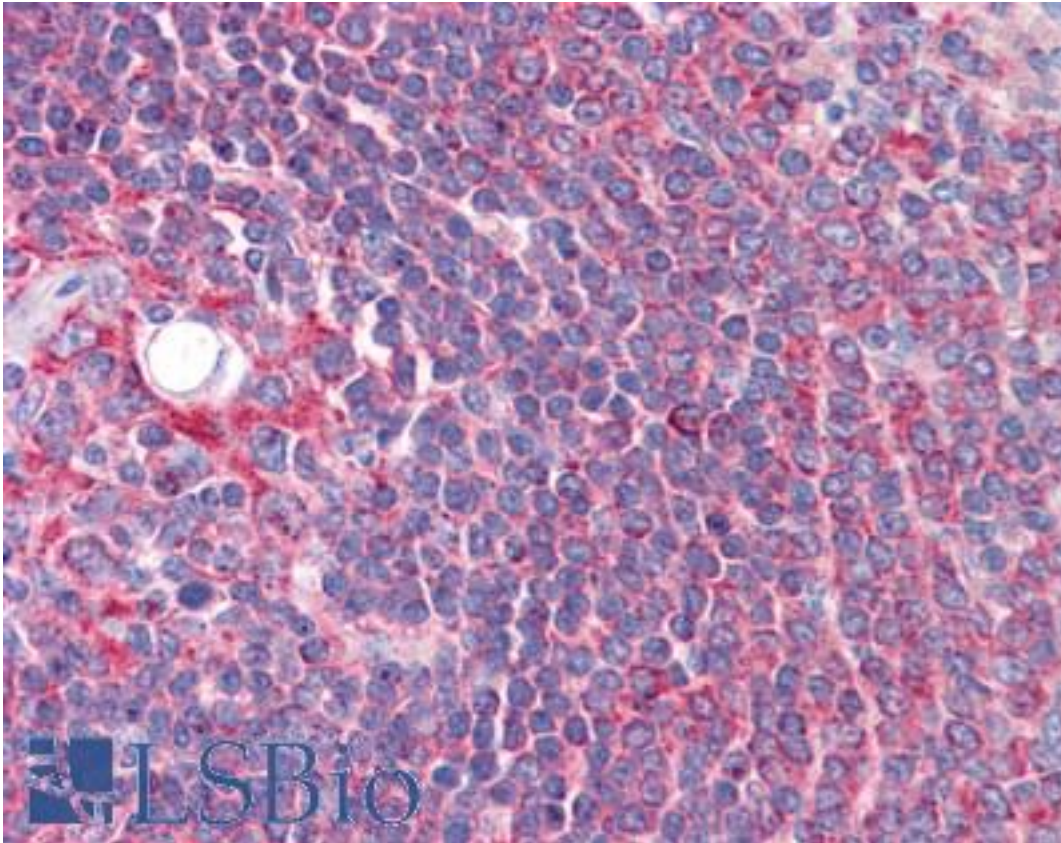


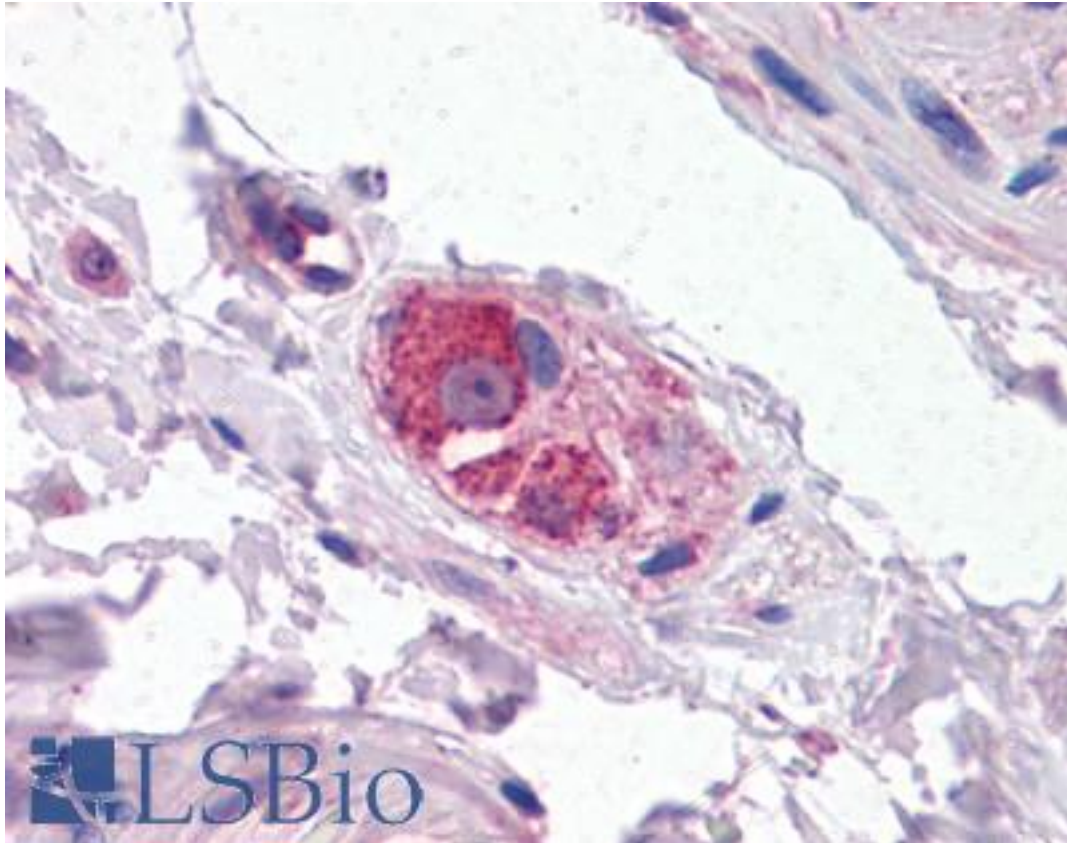
| CYP26B1 Goat anti-Human Polyclonal (Internal) Antibody - LS-B4934 - LSBio |  |
|---|--|
| <b>CatalogID:</b>   | LS-B4934   |
| <b>Validation:</b>  | This antibody replaces catalog number LS-C54694. It has been validated for use in the following assays: IHC-P.   |
| <b>Target:</b>  | cytochrome P450, family 26, subfamily B, polypeptide 1 (CYP26B1)   |
| <b>Synonyms:</b>  | CYP26B1 Antibody, Cytochrome P450RAI-2 Antibody, Cytochrome P450 26B1 Antibody, p450RAI2 Antibody, RHFCA Antibody, CYP26A2 Antibody, Cytochrome P450 26A2 Antibody, p450RAI-2 Antibody   |
| <b>Host</b>   | CYP26B1 antibody was produced in Goat  |
| <b>Clonality:</b>   | Polyclonal   |
| <b>Immunogen Species:</b>   | CYP26B1 antibody was raised against Human  |
| <b>Antigen Type:</b>  | Synthetic peptide  |
| <b>Immunogen:</b>   | CYP26B1 antibody was raised against synthetic peptide C-SQARSEDKDGRFH from an internal region of human CYP26B1 (NP_063938.1). Percent identity by BLAST analysis: Human, Gorilla, Gibbon, Monkey, Marmoset, Mouse, Rat, Hamster, Elephant, Horse, Rabbit (100%); Panda, Bovine, Dog, Bat, Pig (92%). |
| <b>Specificity:</b>   | Human CYP26B1.   |
| <b>Epitope:</b>   | Internal   |
| <b>Reactivity:</b>  | Human, Gorilla, Gibbon, Monkey, Mouse, Rat, Hamster, Horse, Rabbit   |
| <b>Predicted Reactivity:</b>  | Bat, Bovine, Dog, Pig  |
| <b>Purification:</b>  | Immunoaffinity purified  |
| <b>Presentation:</b>  | Tris-buffered saline, pH 7.3, 0.5% BSA, 0.02% sodium azide   |
| <b>Recommended Storage:</b>   | Store at -20°C. Minimize freezing and thawing.   |
| <b>Uses:</b>  | IHC - Paraffin (3.75 µg/ml), ELISA (1:128000) (Optimal dilution to be determined by the researcher)  |
| <b>Size:</b>  | 50 µg  |
| <b>Concentration:</b>   | 0.5 mg/ml  |

**Immunohistochemistry Image:**



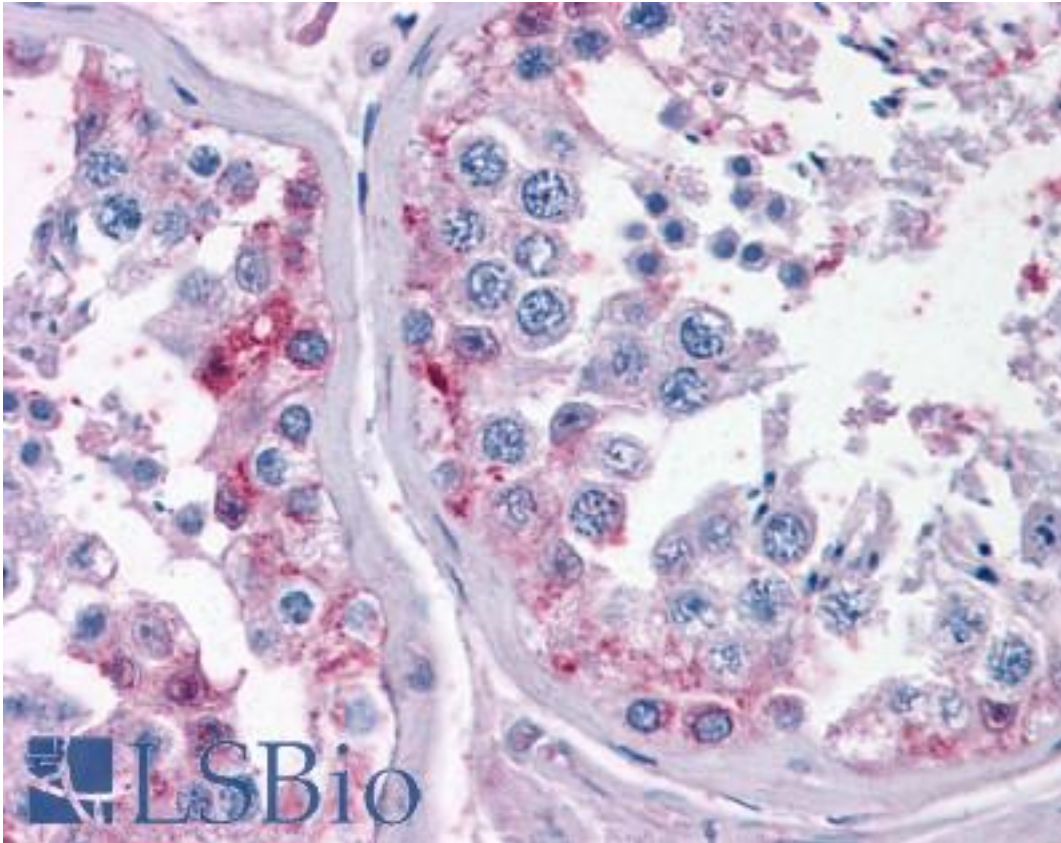
Anti-CYP26B1 antibody IHC of human spleen. Immunohistochemistry of formalin-fixed, paraffin-embedded tissue after heat-induced antigen retrieval. Antibody LS-B4934 concentration 3.75 ug/ml.

**Immunohistochemistry Image:**



Anti-CYP26B1 antibody IHC of human small intestine, submucosal plexus.  
Immunohistochemistry of formalin-fixed, paraffin-embedded tissue after heat-induced antigen retrieval. Antibody LS-B4934 concentration 3.75 ug/ml.

**Immunohistochemistry Image:**



Anti-CYP26B1 antibody IHC of human testis. Immunohistochemistry of formalin-fixed, paraffin-embedded tissue after heat-induced antigen retrieval. Antibody LS-B4934 concentration 3.75 ug/ml.

**Requested From:**

Japan

Laboratory Reagent For In Vitro Research Use Only

Not for resale without prior written consent from LifeSpan BioSciences, Inc.

Created on 9/24/2014

© 2014 LifeSpan BioSciences