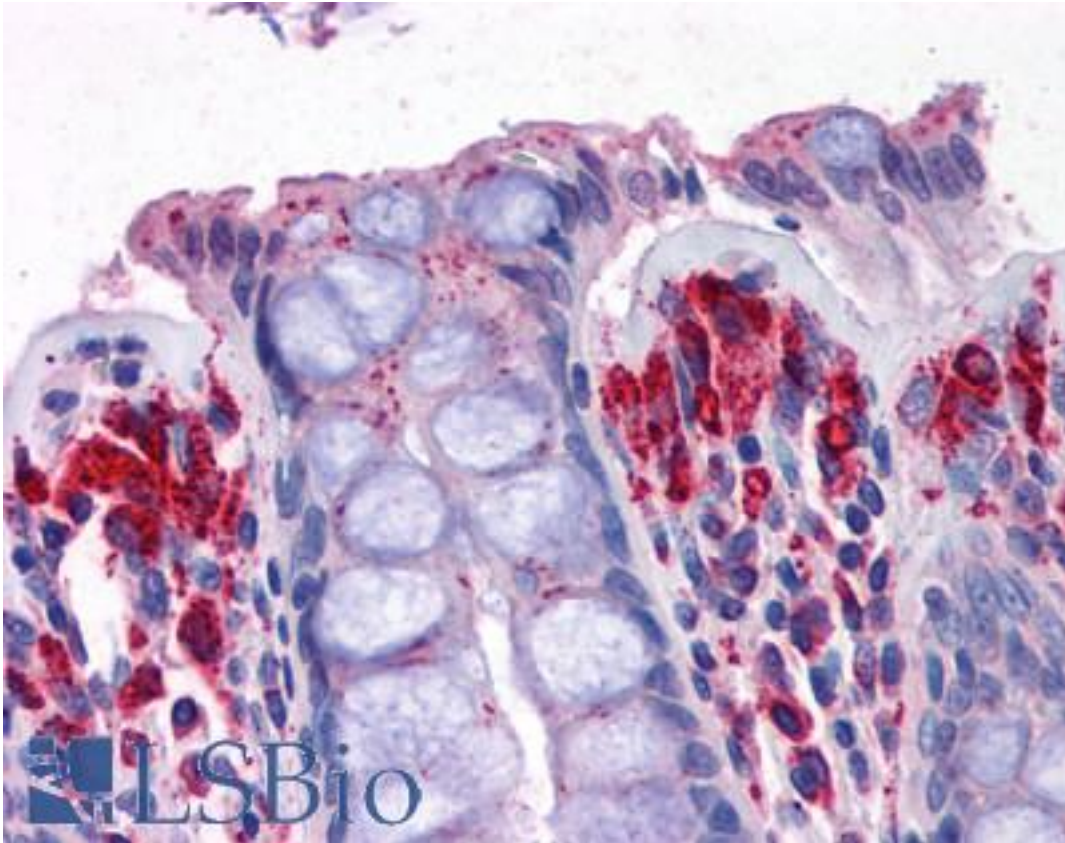


PRODH Goat anti-Human Polyclonal (Internal) Antibody - LS-B4931 - LSBio

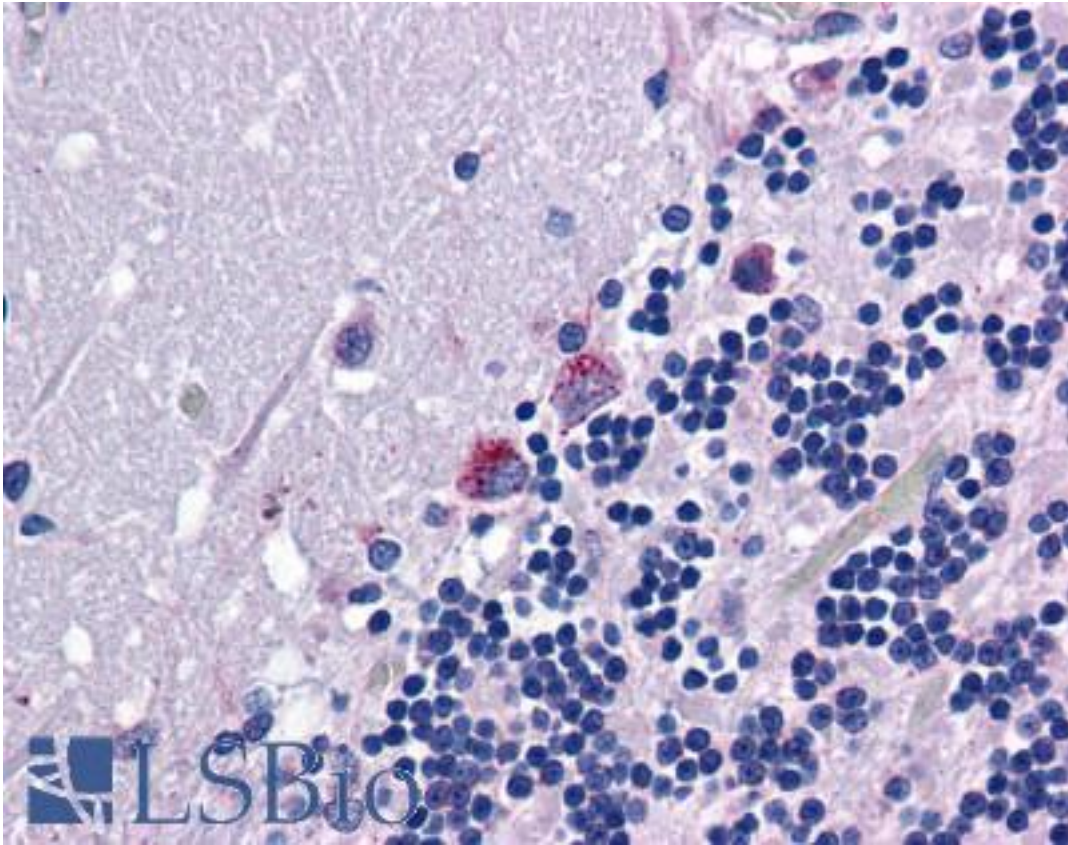
<b>CatalogID:</b>	LS-B4931
<b>Validation:</b>	This antibody replaces catalog number LS-C55318. It has been validated for use in the following assays: IHC-P.
<b>Target:</b>	proline dehydrogenase (oxidase) 1 (PRODH)
<b>Synonyms:</b>	PRODH Antibody, HSPOX2 Antibody, p53-induced gene 6 protein Antibody, POX Antibody, POX2 Antibody, Proline oxidase, mitochondrial Antibody, Proline dehydrogenase Antibody, Proline oxidase Antibody, Proline oxidase 2 Antibody, SCZD4 Antibody, TP53I6 Antibody, PRODH1 Antibody, PIG6 Antibody
<b>Host</b>	PRODH antibody was produced in Goat
<b>Clonality:</b>	Polyclonal
<b>Immunogen Species:</b>	PRODH antibody was raised against Human
<b>Antigen Type:</b>	Synthetic peptide
<b>Immunogen:</b>	PRODH antibody was raised against synthetic peptide C-ERDGSGTNRDKQYQ from an internal region of human PRODH (NP_057419.2). Percent identity by BLAST analysis: Human, Gorilla, Gibbon (100%); Marmoset, Mouse, Rat, Hamster, Elephant (87%).
<b>Specificity:</b>	Human PRODH.
<b>Epitope:</b>	Internal
<b>Reactivity:</b>	Human, Gorilla, Gibbon
<b>Purification:</b>	Immunoaffinity purified
<b>Presentation:</b>	Tris-buffered saline, pH 7.3, 0.5% BSA, 0.02% sodium azide
<b>Recommended Storage:</b>	Store at -20°C. Minimize freezing and thawing.
<b>Uses:</b>	IHC - Paraffin (3.75 µg/ml), ELISA (1:16000) (Optimal dilution to be determined by the researcher)
<b>Size:</b>	50 µg
<b>Concentration:</b>	0.5 mg/ml

**Immunohistochemistry Image:**



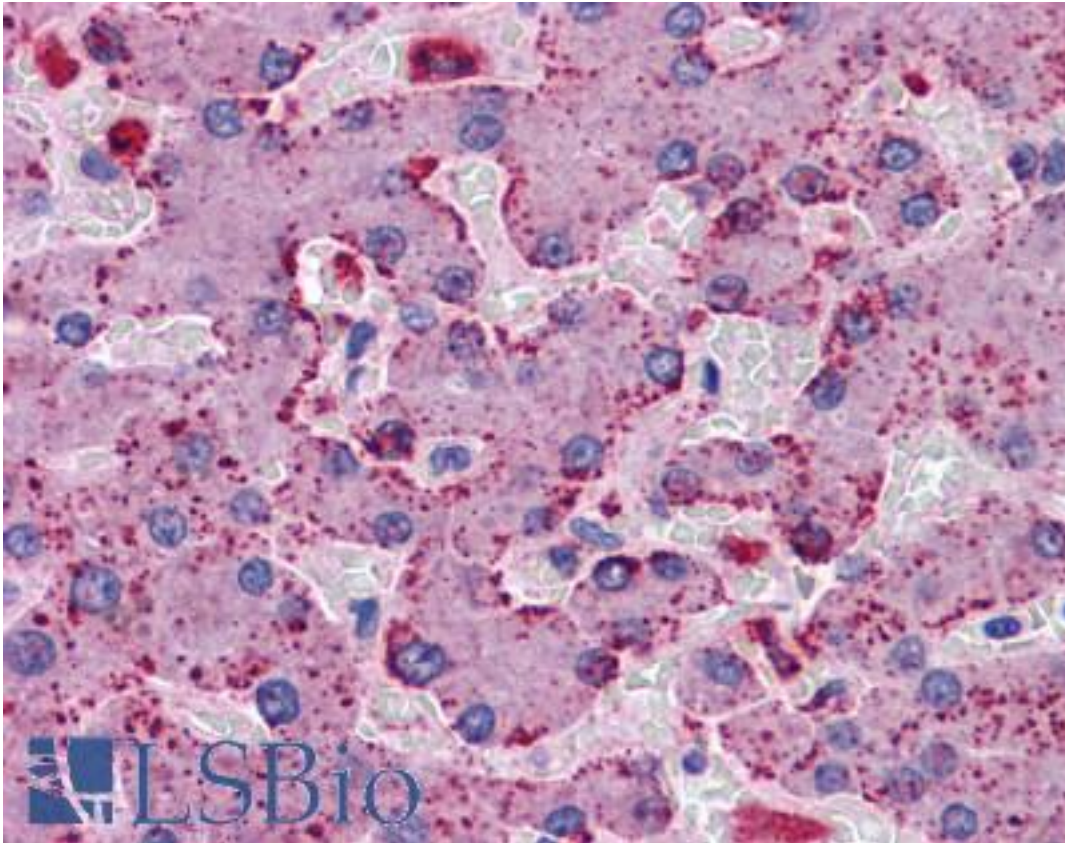
Anti-PROD antibody IHC of human colon. Immunohistochemistry of formalin-fixed, paraffin-embedded tissue after heat-induced antigen retrieval. Antibody LS-B4931 concentration 3.75 ug/ml.

**Immunohistochemistry Image:**



Anti-PRODHD antibody IHC of human brain, cerebellum. Immunohistochemistry of formalin-fixed, paraffin-embedded tissue after heat-induced antigen retrieval. Antibody LS-B4931 concentration 3.75 ug/ml.

**Immunohistochemistry Image:**



Anti-PROD antibody IHC of human liver. Immunohistochemistry of formalin-fixed, paraffin-embedded tissue after heat-induced antigen retrieval. Antibody LS-B4931 concentration 3.75 ug/ml.

**Requested From:**

Japan

Laboratory Reagent For In Vitro Research Use Only

Not for resale without prior written consent from LifeSpan BioSciences, Inc.

Created on 9/24/2014

© 2014 LifeSpan BioSciences