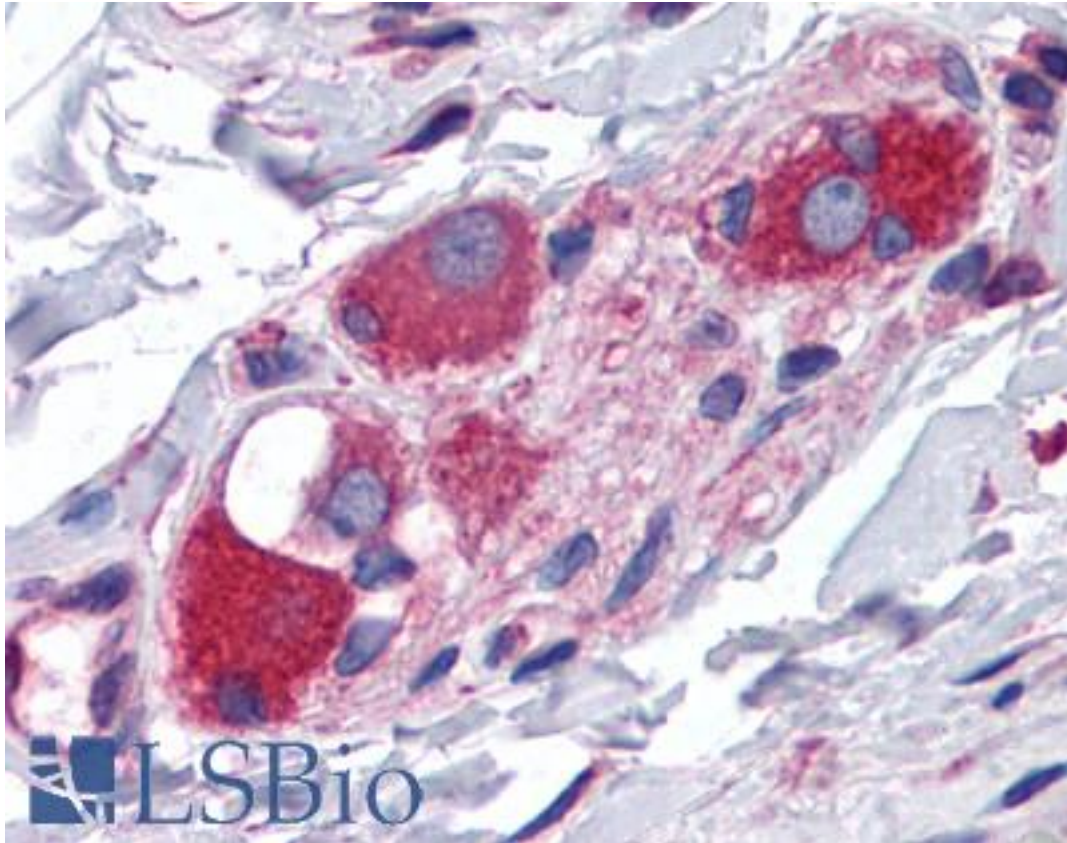


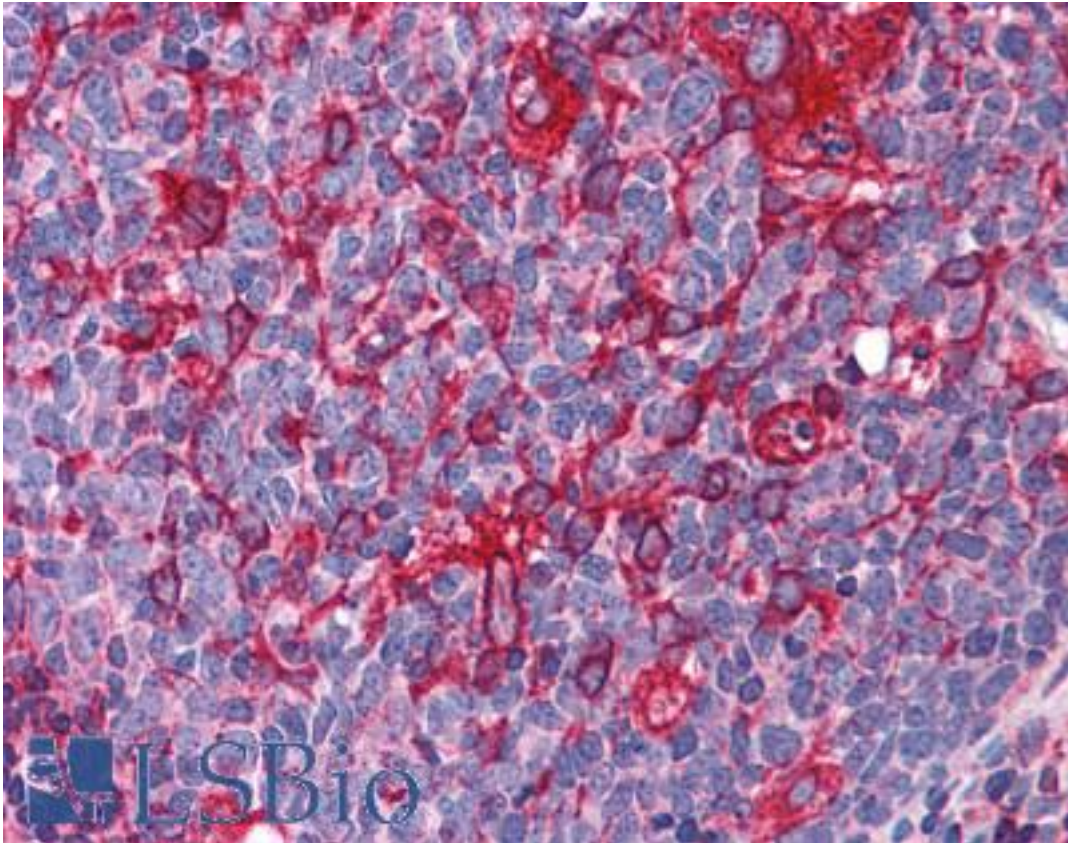
ARL6IP5 Goat anti-Human Polyclonal (C-Terminus) Antibody - LS-B4924 - LSBio	
CatalogID:	LS-B4924
Validation:	This antibody replaces catalog number LS-C54951. It has been validated for use in the following assays: IHC-P.
Target:	ADP-ribosylation-like factor 6 interacting protein 5 (ARL6IP5)
Synonyms:	ARL6IP5 Antibody, Addicsin Antibody, DERP11 Antibody, Aip-5 Antibody, GTRAP3-18 Antibody, JM5 Antibody, JWA Antibody, Jmx Antibody, Hp22 Antibody, PRA2 Antibody, PRAF3 Antibody, PRA1 domain family 3 Antibody, ARL-6-interacting protein 5 Antibody, HSPC127 Antibody, PRA1 family protein 3 Antibody, Protein JWa Antibody
Host	ARL6IP5 antibody was produced in Goat
Clonality:	Polyclonal
Immunogen Species:	ARL6IP5 antibody was raised against Human
Antigen Type:	Synthetic peptide
Immunogen:	ARL6IP5 antibody was raised against synthetic peptide C-NRLTDYISKVKE from the C-terminus of human ARL6IP5 / JWA (NP_006398.1). Percent identity by BLAST analysis: Human, Gorilla, Orangutan, Gibbon, Monkey (100%); Horse (92%); Elephant, Turkey (83%).
Specificity:	Human ARL6IP5 / JWA.
Epitope:	C-Terminus
Reactivity:	Human, Gorilla, Orangutan, Gibbon, Monkey
Predicted Reactivity:	Horse
Purification:	Immunoaffinity purified
Presentation:	Tris-buffered saline, pH 7.3, 0.5% BSA, 0.02% sodium azide
Recommended Storage:	Store at -20°C. Minimize freezing and thawing.
Uses:	IHC - Paraffin (3.75 µg/ml), Western blot (1:32000) & (0.1 - 0.3 µg/ml), ELISA (1:32000) (Optimal dilution to be determined by the researcher)
Size:	50 µg
Concentration:	0.5 mg/ml

Immunohistochemistry Image:



Anti-ARL6IP5 / JWA antibody IHC of human small intestine, submucosal plexus.
Immunohistochemistry of formalin-fixed, paraffin-embedded tissue after heat-induced antigen retrieval. Antibody LS-B4924 concentration 3.75 ug/ml.

Immunohistochemistry Image:



Anti-ARL6IP5 / JWA antibody IHC of human tonsil. Immunohistochemistry of formalin-fixed, paraffin-embedded tissue after heat-induced antigen retrieval. Antibody LS-B4924 concentration 3.75 ug/ml.

Western Blot Image:



Antibody staining (0.1 ug/ml) of Human Brain lysate (RIPA buffer, 35 ug total protein per lane). Primary incubated for 1 hour. Detected by Western blot of chemiluminescence.

Requested From:

Japan

Laboratory Reagent For In Vitro Research Use Only

Not for resale without prior written consent from LifeSpan BioSciences, Inc.

Created on 9/24/2014

© 2014 LifeSpan BioSciences