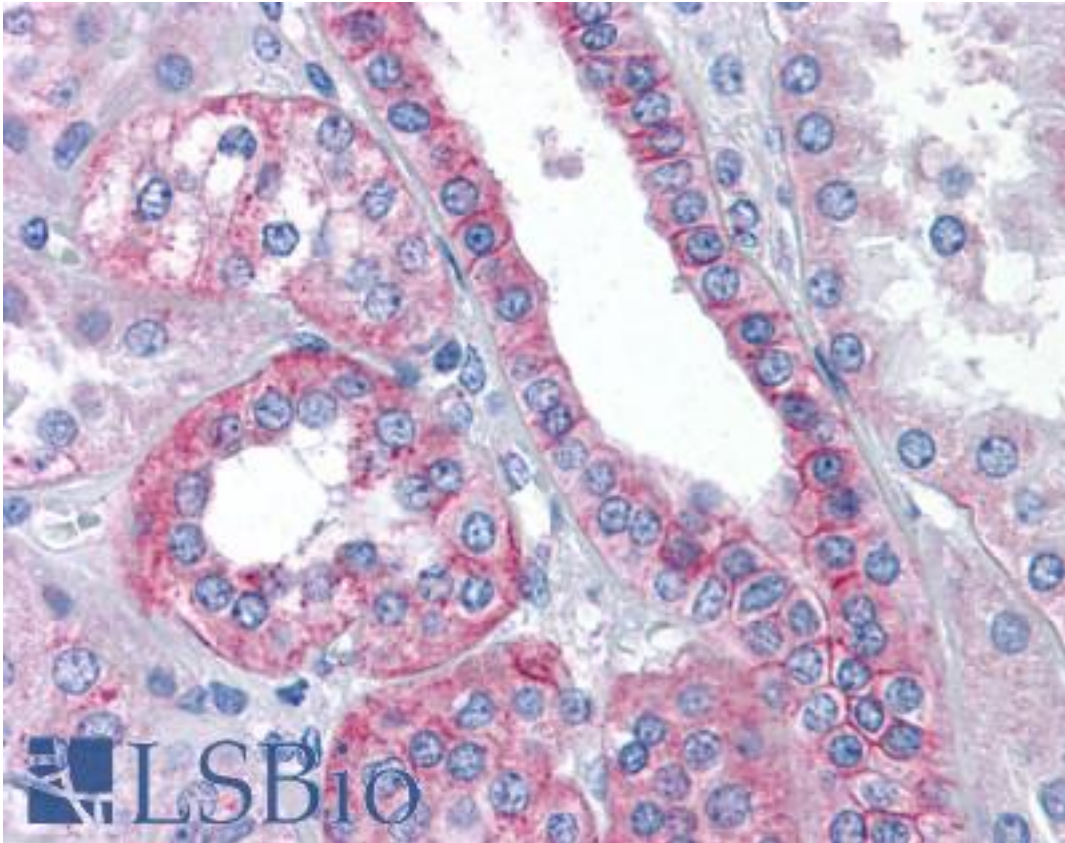


FLOT2 / Flotillin 2 Goat anti-Human Polyclonal (C-Terminus) Antibody - LS-B4923 - LSBio

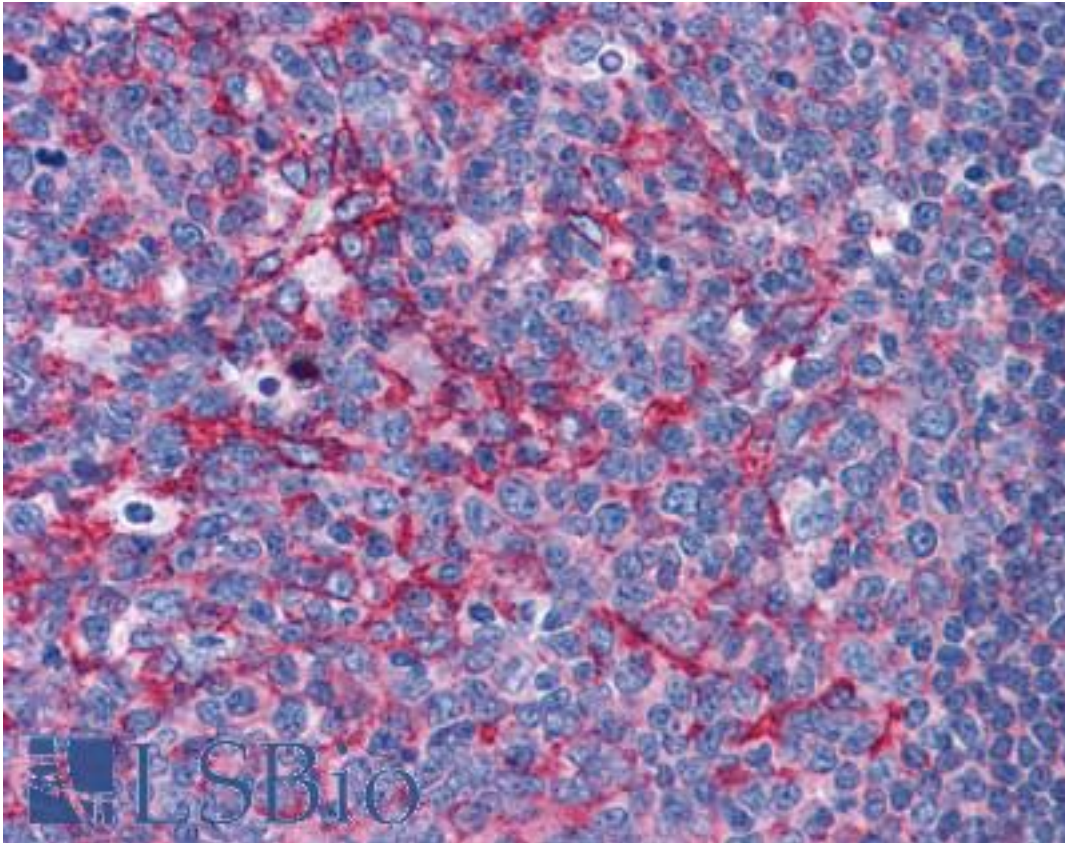
CatalogID:	LS-B4923
Validation:	This antibody replaces catalog number LS-C34644. It has been validated for use in the following assays: IHC-P.
Target:	flotillin 2 (FLOT2)
Synonyms:	FLOT2 Antibody, ECS-1 Antibody, Epidermal surface antigen Antibody, ECS1 Antibody, ESA Antibody, ESA1 Antibody, Flotillin 2 Antibody, Flotillin-2 Antibody, M17S1 Antibody
Host	FLOT2 antibody was produced in Goat
Clonality:	Polyclonal
Immunogen Species:	FLOT2 / Flotillin 2 antibody was raised against Human
Antigen Type:	Synthetic peptide
Immunogen:	FLOT2 / Flotillin 2 antibody was raised against synthetic peptide C-SKIPLIKKATGVQV from the C-terminus of human FLOT2 / Flotillin 1 (NP_004466.2). Percent identity by BLAST analysis: Human, Gorilla, Gibbon, Monkey, Marmoset (100%); Elephant, Bat, Bovine, Rabbit (93%); Mouse, Rat, Hamster, Dog, Pig (86%).
Specificity:	Human FLOT2 / Flotillin 1.
Epitope:	C-Terminus
Reactivity:	Human, Gorilla, Gibbon, Monkey
Predicted Reactivity:	Bat, Bovine, Rabbit
Purification:	Immunoaffinity purified
Presentation:	Tris-buffered saline, pH 7.3, 0.5% BSA, 0.02% sodium azide
Recommended Storage:	Store at -20°C. Minimize freezing and thawing.
Usage Summary:	Peptide ELISA: antibody detection limit dilution 1:32000. Western blot: Approx 48 kDa band observed in Human Brain (Cerebellum), Lung and Testis lysates (calculated MW of 47.1 kDa according to NP_004466.2). Recommended concentration: 0.1-0.3 ug/ml.
Uses:	IHC - Paraffin (3.75 µg/ml), Western blot (0.1 - 0.3 µg/ml), ELISA (1:32000) (Optimal dilution to be determined by the researcher)
Size:	50 µg
Concentration:	0.5 mg/ml

Immunohistochemistry Image:



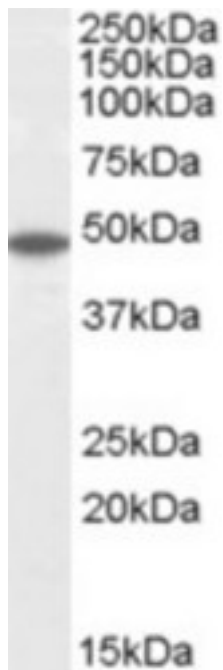
Anti-FLOT2 / Flotillin 1 antibody IHC of human kidney. Immunohistochemistry of formalin-fixed, paraffin-embedded tissue after heat-induced antigen retrieval. Antibody LS-B4923 concentration 3.75 ug/ml.

Immunohistochemistry Image:



Anti-FLOT2 / Flotillin 1 antibody IHC of human tonsil. Immunohistochemistry of formalin-fixed, paraffin-embedded tissue after heat-induced antigen retrieval. Antibody LS-B4923 concentration 3.75 ug/ml.

Western Blot Image:



FLOT2 antibody (0.1 ug/ml) staining of Human Brain (Cerebellum) lysate (35 ug protein/ml in RIPA buffer). Primary incubation was 1 hour. Detected by chemiluminescence.

Requested From:

Japan

Laboratory Reagent For In Vitro Research Use Only

Not for resale without prior written consent from LifeSpan BioSciences, Inc.

Created on 9/24/2014

© 2014 LifeSpan BioSciences