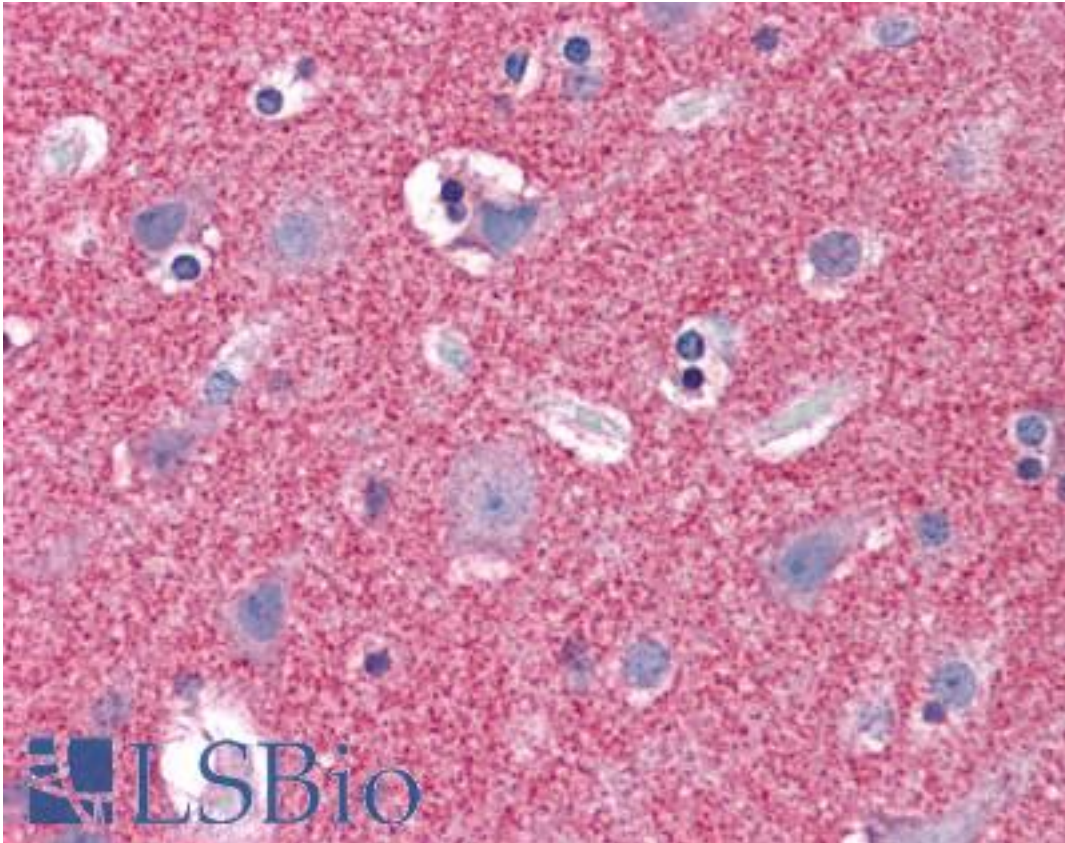


SEPT3 / Septin 3 Goat anti-Human Polyclonal (N-Terminus) Antibody - LS-B4922 - LSBio

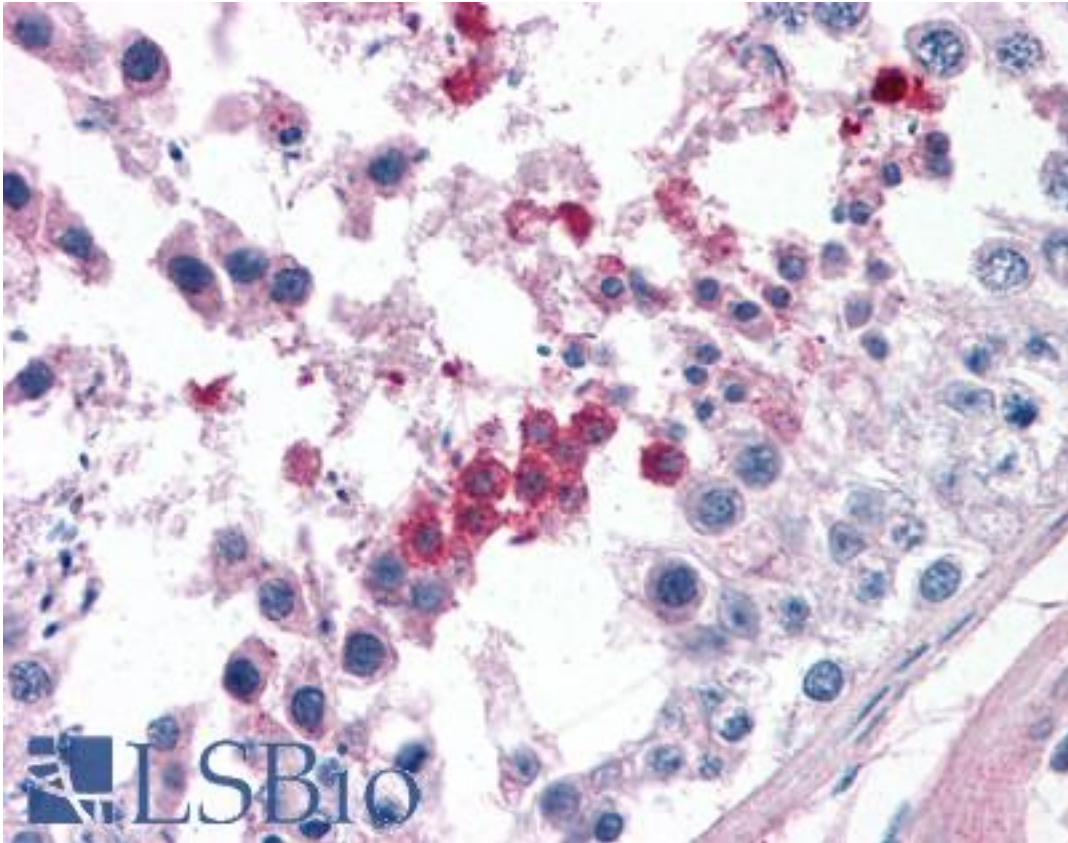
CatalogID:	LS-B4922
Validation:	This antibody replaces catalog number LS-C55449. It has been validated for use in the following assays: IHC-P.
Target:	septin 3 (SEPT3)
Synonyms:	SEPT3 Antibody, BK250D10.3 Antibody, Neuronal-specific septin 3 Antibody, SEP3 Antibody, Neuronal-specific septin-3 Antibody, Septin 3 Antibody
Host	SEPT3 antibody was produced in Goat
Clonality:	Polyclonal
Immunogen Species:	SEPT3 / Septin 3 antibody was raised against Human
Antigen Type:	Synthetic peptide
Immunogen:	SEPT3 / Septin 3 antibody was raised against synthetic peptide SELVPEPRKPA-C from the N-terminus of human SEPT3 / Septin 3 (NP_663786.1; NP_061979.3). Percent identity by BLAST analysis: Human, Gorilla, Monkey, Mouse, Rat, Hamster, Elephant, Panda, Dog, Bat, Bovine, Horse, Rabbit, Pig (100%); Gibbon, Platypus, Xenopus (92%); Lizard (83%).
Specificity:	Human SEPT3 / Septin 3. This antibody is expected to recognize both reported isoforms according to NP_663786.1 and NP_061979.3.
Epitope:	N-Terminus
Reactivity:	Human, Gorilla, Monkey, Mouse, Rat, Bat, Bovine, Dog, Hamster, Horse, Pig, Rabbit
Predicted Reactivity:	Gibbon, Xenopus
Purification:	Immunoaffinity purified
Presentation:	Tris-buffered saline, pH 7.3, 0.5% BSA, 0.02% sodium azide
Recommended Storage:	Store at -20°C. Minimize freezing and thawing.
Uses:	IHC - Paraffin (3.75 µg/ml), Western blot (0.5 - 2 µg/ml) (Optimal dilution to be determined by the researcher)
Size:	50 µg
Concentration:	0.5 mg/ml

Immunohistochemistry Image:



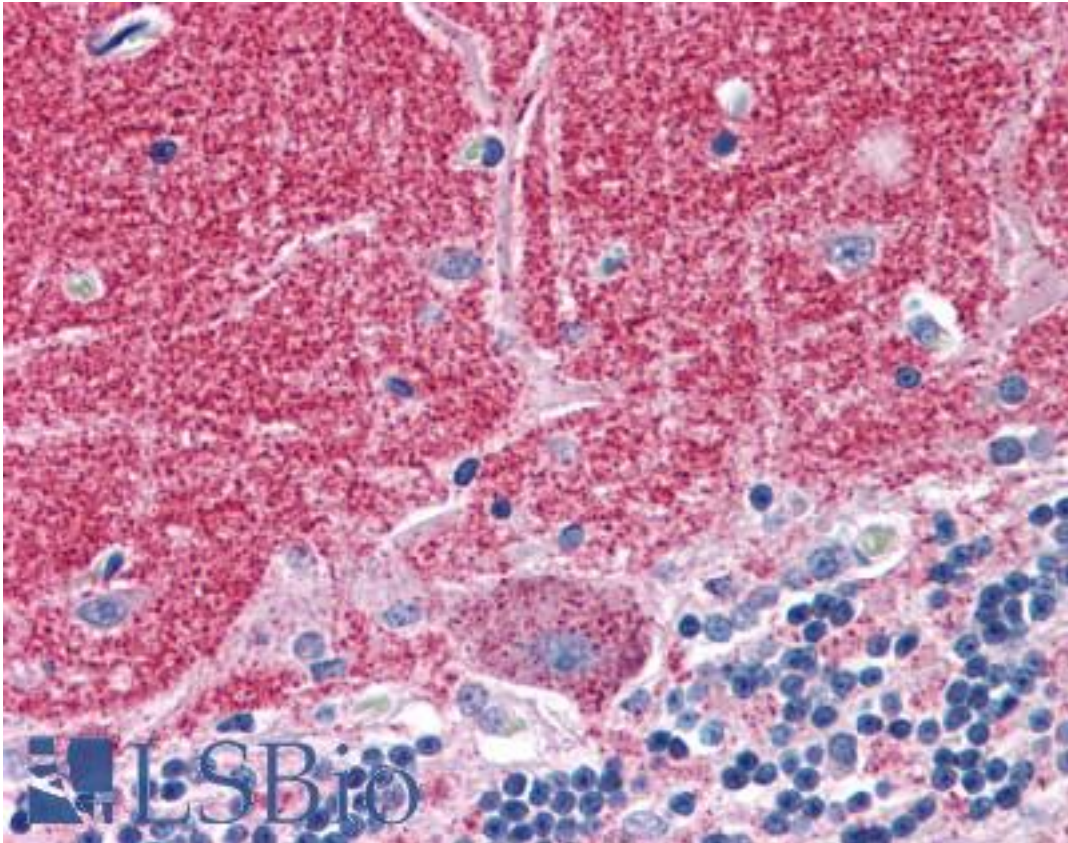
Anti-SEPT3 / Septin 3 antibody IHC of human brain, cortex. Immunohistochemistry of formalin-fixed, paraffin-embedded tissue after heat-induced antigen retrieval. Antibody LS-B4922 concentration 3.75 ug/ml.

Immunohistochemistry Image:



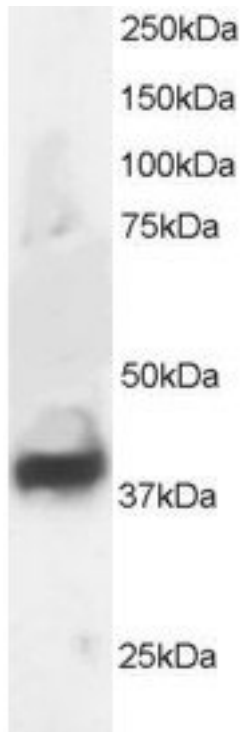
Anti-SEPT3 / Septin 3 antibody IHC of human testis. Immunohistochemistry of formalin-fixed, paraffin-embedded tissue after heat-induced antigen retrieval. Antibody LS-B4922 concentration 3.75 ug/ml.

Immunohistochemistry Image:



Anti-SEPT3 / Septin 3 antibody IHC of human brain, cerebellum. Immunohistochemistry of formalin-fixed, paraffin-embedded tissue after heat-induced antigen retrieval. Antibody LS-B4922 concentration 3.75 ug/ml.

Western Blot Image:



Antibody staining (1 ug/ml) of Human Brain lysate (RIPA buffer, 30 ug total protein per lane). Primary incubated for 1 hour. Detected by Western blot of chemiluminescence.

Requested From:

Japan

Laboratory Reagent For In Vitro Research Use Only

Not for resale without prior written consent from LifeSpan BioSciences, Inc.

Created on 9/24/2014

© 2014 LifeSpan BioSciences