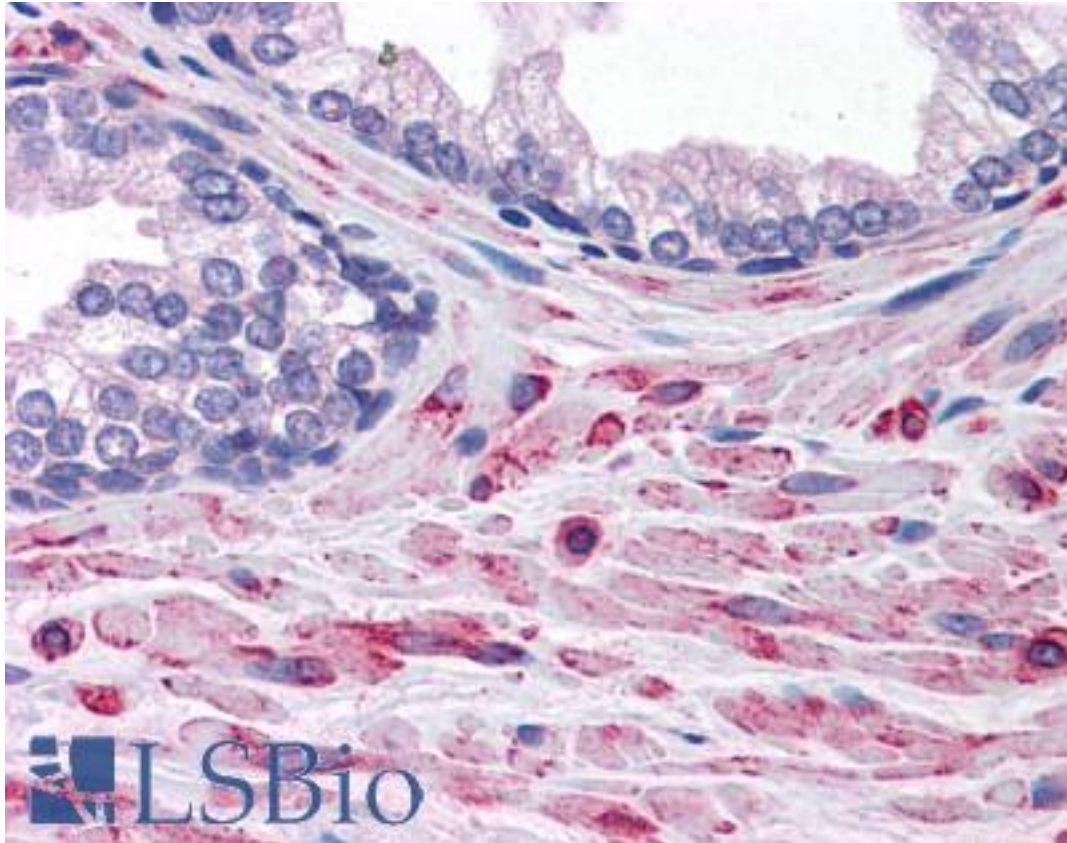


ELMO2 Goat anti-Human Polyclonal (C-Terminus) Antibody - LS-B4921 - LSBio

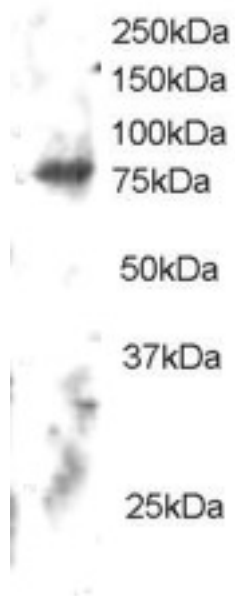
CatalogID:	LS-B4921
Validation:	This antibody replaces catalog number LS-C54768. It has been validated for use in the following assays: IHC-P.
Target:	engulfment and cell motility 2 (ELMO2)
Synonyms:	ELMO2 Antibody, PH domain protein CED12A Antibody, CED-12 Antibody, Ced-12 homolog 2 Antibody, CED12 Antibody, CED12A Antibody, ELMO-2 Antibody, Engulfment and cell motility 2 Antibody, HCed-12A Antibody, KIAA1834 Antibody, Protein ced-12 homolog A Antibody
Host	ELMO2 antibody was produced in Goat
Clonality:	Polyclonal
Immunogen Species:	ELMO2 antibody was raised against Human
Antigen Type:	Synthetic peptide
Immunogen:	ELMO2 antibody was raised against synthetic peptide C-PKEPSSYDFVYHYG from the C-terminus of human ELMO2 (NP_877496.1; NP_573403.1). Percent identity by BLAST analysis: Human, Gorilla, Orangutan, Gibbon, Monkey, Marmoset, Mouse, Rat, Hamster, Elephant, Dog, Bat, Bovine, Horse, Rabbit, Opossum, Chicken, Xenopus (100%); Panda (93%).
Specificity:	Human ELMO2. NP_877496.1 and NP_573403.1 are variants that encode the same protein.
Epitope:	C-Terminus
Reactivity:	Human, Gorilla, Orangutan, Gibbon, Monkey, Mouse, Rat, Bat, Bovine, Dog, Hamster, Horse, Rabbit, Chicken, Xenopus
Purification:	Immunoaffinity purified
Presentation:	Tris-buffered saline, pH 7.3, 0.5% BSA, 0.02% sodium azide
Recommended Storage:	Store at -20°C. Minimize freezing and thawing.
Uses:	IHC - Paraffin (3.75 µg/ml), Western blot (1 - 3 µg/ml) (Optimal dilution to be determined by the researcher)
Size:	50 µg
Concentration:	0.5 mg/ml

Immunohistochemistry Image:



Anti-ELMO2 antibody IHC of human prostate. Immunohistochemistry of formalin-fixed, paraffin-embedded tissue after heat-induced antigen retrieval. Antibody LS-B4921 concentration 3.75 ug/ml.

Western Blot Image:



Antibody staining (2 ug/ml) of Human Brain lysate (RIPA buffer, 30 ug total protein per lane).
Primary incubated for 12 hour. Detected by Western blot of chemiluminescence.

Requested From:

Japan

Laboratory Reagent For In Vitro Research Use Only

Not for resale without prior written consent from LifeSpan BioSciences, Inc.

Created on 9/24/2014

© 2014 LifeSpan BioSciences