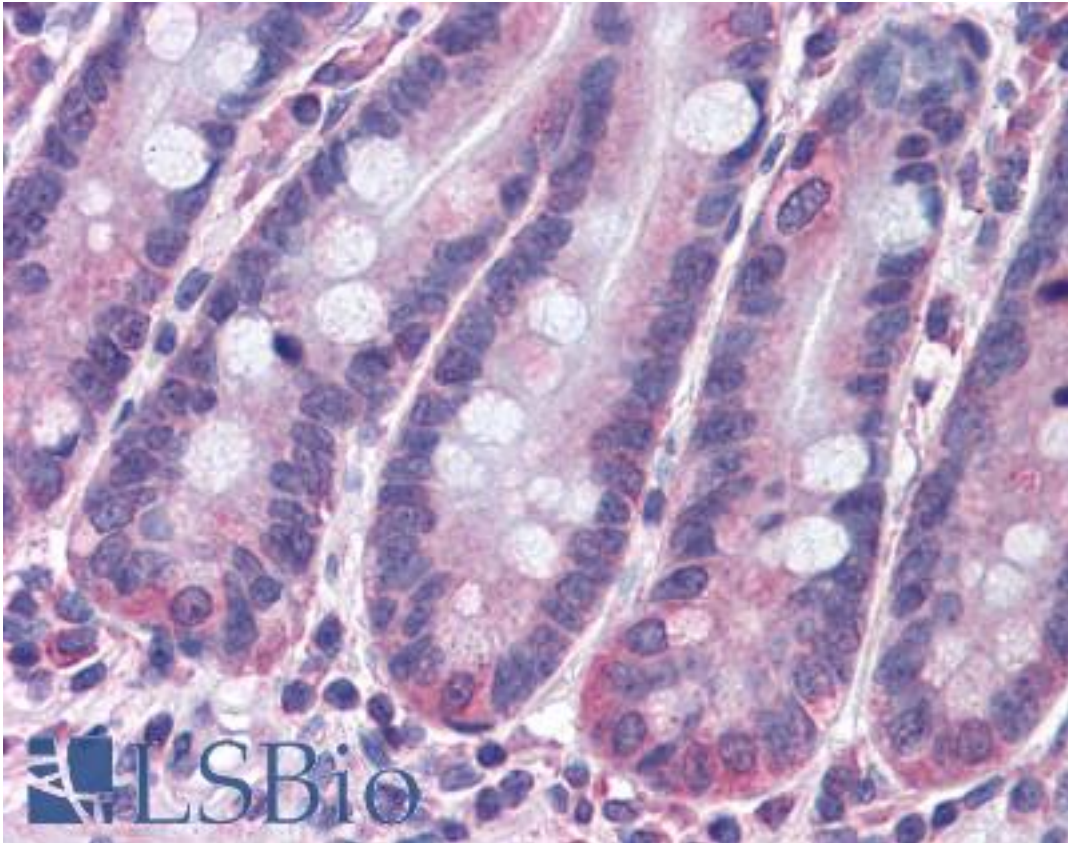


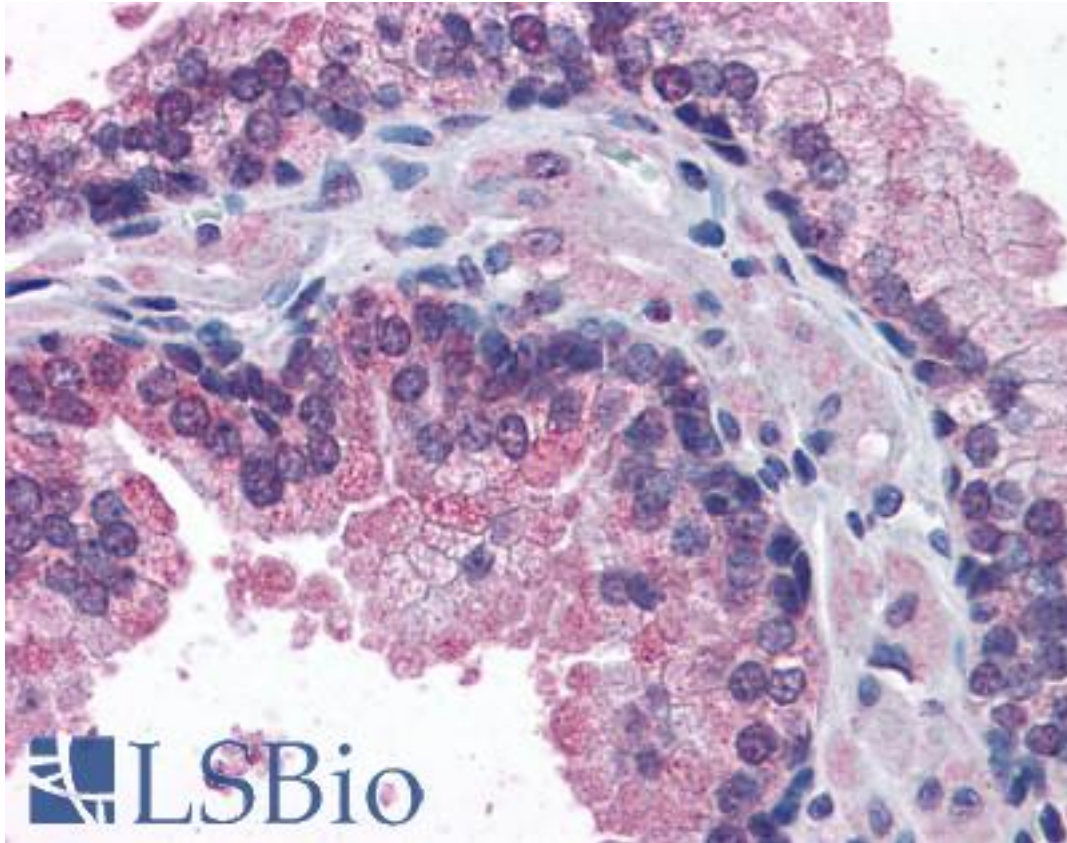
STAP2 Goat anti-Human Polyclonal (C-Terminus) Antibody - LS-B4920 - LSBio	
CatalogID:	LS-B4920
Validation:	This antibody replaces catalog number LS-C55533. It has been validated for use in the following assays: IHC-P.
Target:	signal transducing adaptor family member 2 (STAP2)
Synonyms:	STAP2 Antibody, BRK substrate Antibody, BKS Antibody, Brk kinase substrate Antibody, STAP-2 Antibody, Breast tumor kinase substrate Antibody
Host	STAP2 antibody was produced in Goat
Clonality:	Polyclonal
Immunogen Species:	STAP2 antibody was raised against Human
Antigen Type:	Synthetic peptide
Immunogen:	STAP2 antibody was raised against synthetic peptide C-ELQKKLEKRRRALEH from the C-terminus of human STAP2 (NP_060190.2; NP_001013863.1). Percent identity by BLAST analysis: Human, Gorilla, Gibbon, Marmoset (100%).
Specificity:	Human STAP2. This antibody is expected to recognise isoforms 1 (NP_060190.2) and isoform 2 (NP_001013863.1).
Epitope:	C-Terminus
Reactivity:	Human, Gorilla, Gibbon, Monkey
Purification:	Immunoaffinity purified
Presentation:	Tris-buffered saline, pH 7.3, 0.5% BSA, 0.02% sodium azide
Recommended Storage:	Store at -20°C. Minimize freezing and thawing.
Uses:	IHC - Paraffin (3.75 µg/ml), Western blot (1:16000) & (0.05 - 0.3 µg/ml), ELISA (1:16000) (Optimal dilution to be determined by the researcher)
Size:	50 µg
Concentration:	0.5 mg/ml

Immunohistochemistry Image:



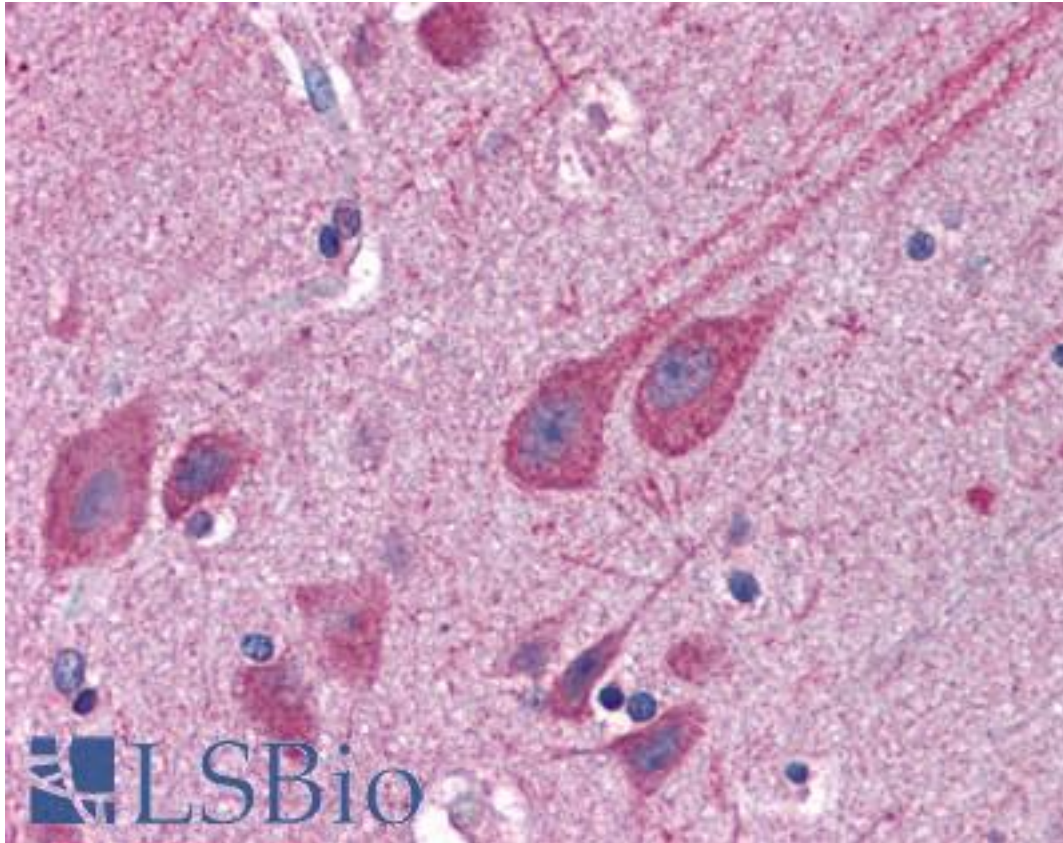
Anti-STAP2 antibody IHC of human small intestine. Immunohistochemistry of formalin-fixed, paraffin-embedded tissue after heat-induced antigen retrieval. Antibody LS-B4920 concentration 3.75 ug/ml.

Immunohistochemistry Image:



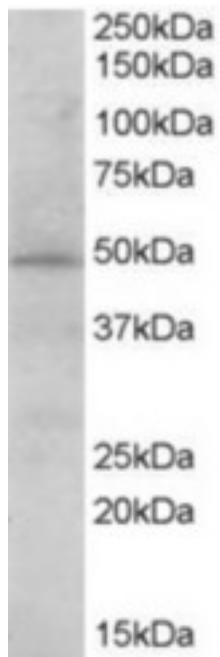
Anti-STAP2 antibody IHC of human prostate. Immunohistochemistry of formalin-fixed, paraffin-embedded tissue after heat-induced antigen retrieval. Antibody LS-B4920 concentration 3.75 ug/ml.

Immunohistochemistry Image:



Anti-STAP2 antibody IHC of human brain, cortex. Immunohistochemistry of formalin-fixed, paraffin-embedded tissue after heat-induced antigen retrieval. Antibody LS-B4920 concentration 3.75 ug/ml.

Western Blot Image:



Antibody (0.03 ug/ml) staining of human heart lysate (35 ug protein in RIPA buffer). Primary incubation was 1 hour. Detected by chemiluminescence.

Requested From:

Japan

Laboratory Reagent For In Vitro Research Use Only

Not for resale without prior written consent from LifeSpan BioSciences, Inc.

Created on 9/24/2014

© 2014 LifeSpan BioSciences