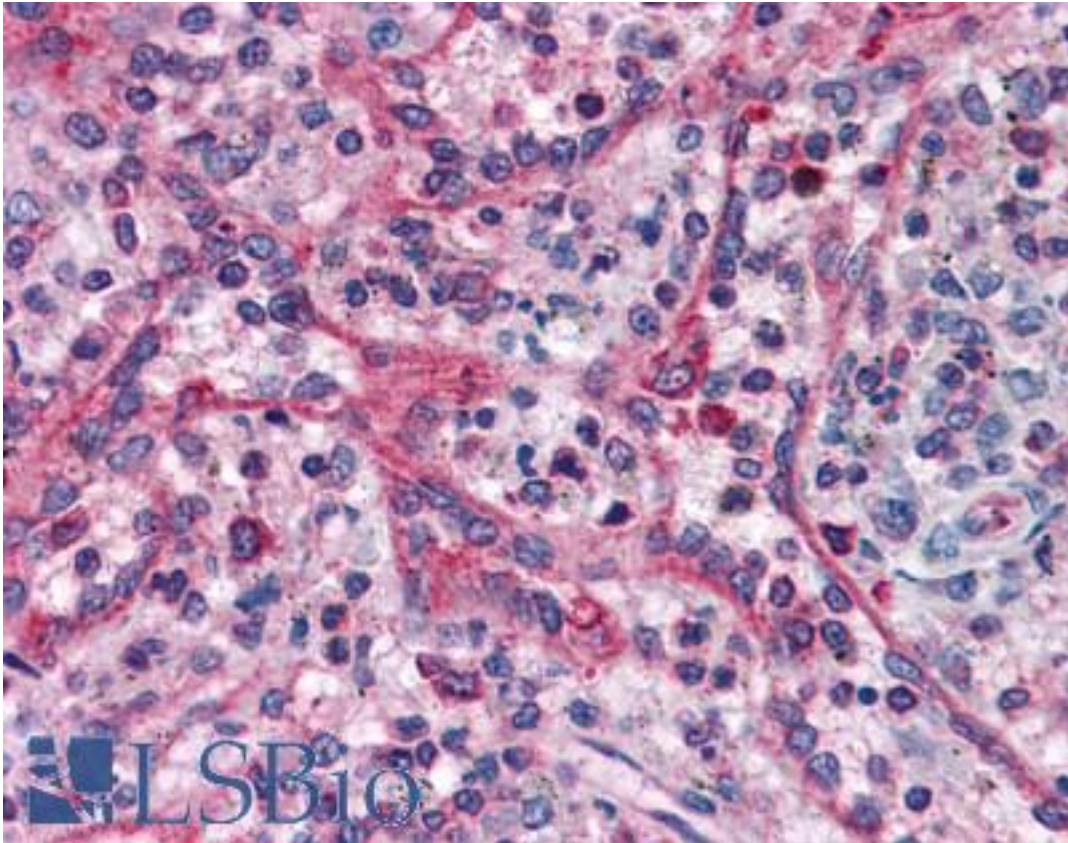


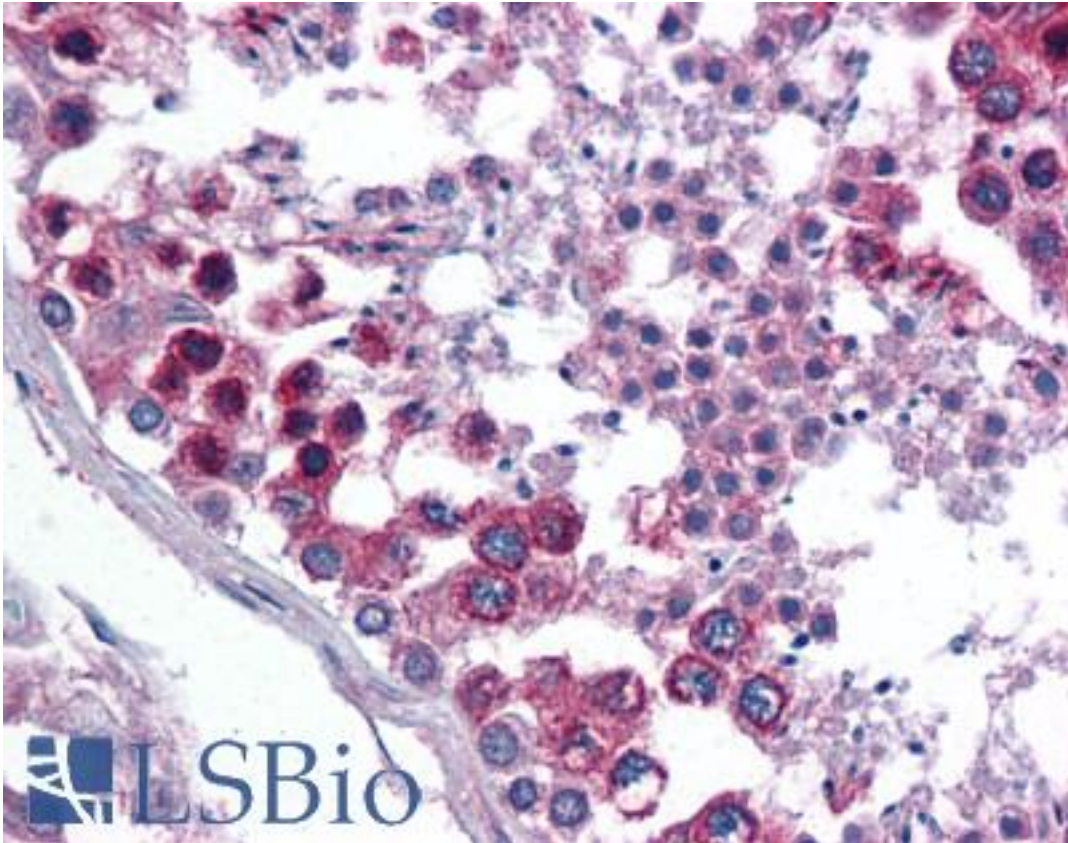
TXNDC1 / TMX1 Goat anti-Human Polyclonal (C-Terminus) Antibody - LS-B4919 - LSBio	
<b>CatalogID:</b>	LS-B4919
<b>Validation:</b>	This antibody replaces catalog number LS-C55641. It has been validated for use in the following assays: IHC-P.
<b>Target:</b>	thioredoxin-related transmembrane protein 1 (TMX1)
<b>Synonyms:</b>	TMX1 Antibody, TXNDC1 Antibody, Thioredoxin domain-containing Antibody, TXNDC Antibody, PDIA11 Antibody, Thioredoxin domain containing Antibody, TMX Antibody
<b>Host</b>	TMX1 antibody was produced in Goat
<b>Clonality:</b>	Polyclonal
<b>Immunogen Species:</b>	TXNDC1 / TMX1 antibody was raised against Human
<b>Antigen Type:</b>	Synthetic peptide
<b>Immunogen:</b>	TXNDC1 / TMX1 antibody was raised against synthetic peptide C-RSLGPSLATDKS from the C-terminus of human TMX1 / TXNDC (NP_110382.3). Percent identity by BLAST analysis: Human, Gorilla, Gibbon, Monkey (100%); Orangutan, Marmoset, Bat, Bovine, Pig (92%); Panda, Dog (83%).
<b>Specificity:</b>	Human TMX1 / TXNDC.
<b>Epitope:</b>	C-Terminus
<b>Reactivity:</b>	Human, Gorilla, Gibbon
<b>Predicted Reactivity:</b>	Orangutan, Monkey, Bat, Bovine, Pig
<b>Purification:</b>	Immunoaffinity purified
<b>Presentation:</b>	Tris-buffered saline, pH 7.3, 0.5% BSA, 0.02% sodium azide
<b>Recommended Storage:</b>	Store at -20°C. Minimize freezing and thawing.
<b>Uses:</b>	IHC - Paraffin (3.75 µg/ml), Western blot (1:64000) & (0.01 - 0.03 µg/ml), ELISA (1:64000) (Optimal dilution to be determined by the researcher)
<b>Size:</b>	50 µg

**Immunohistochemistry Image:**



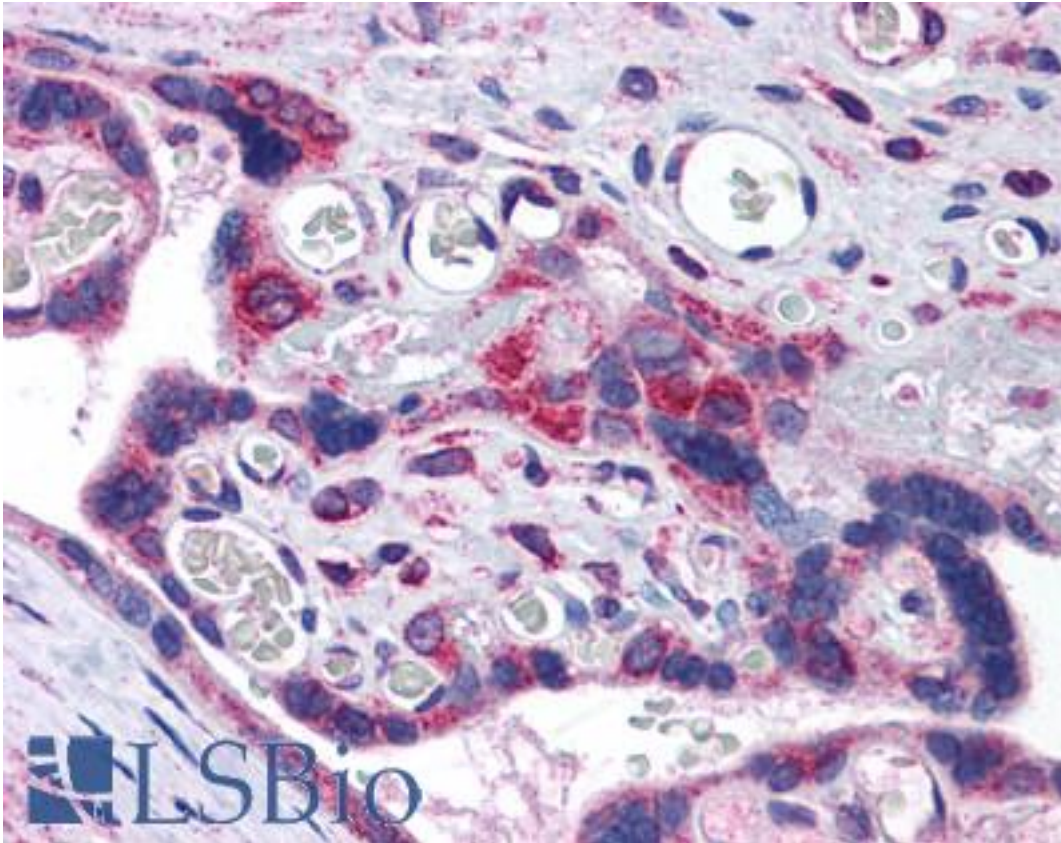
Anti-TMX1 / TXNDC antibody IHC of human spleen. Immunohistochemistry of formalin-fixed, paraffin-embedded tissue after heat-induced antigen retrieval. Antibody LS-B4919 concentration 3.75 ug/ml.

**Immunohistochemistry Image:**



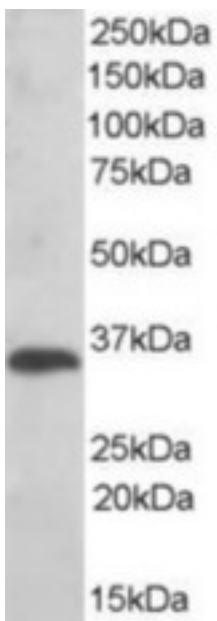
Anti-TMX1 / TXNDC antibody IHC of human testis. Immunohistochemistry of formalin-fixed, paraffin-embedded tissue after heat-induced antigen retrieval. Antibody LS-B4919 concentration 3.75 ug/ml.

**Immunohistochemistry Image:**



Anti-TMX1 / TXNDC antibody IHC of human placenta. Immunohistochemistry of formalin-fixed, paraffin-embedded tissue after heat-induced antigen retrieval. Antibody LS-B4919 concentration 3.75 ug/ml.

**Western Blot Image:**



Antibody (0.01 ug/ml) staining of human liver lysate (35 ug protein in RIPA buffer). Primary incubation was 1 hour. Detected by chemiluminescence.

<b>Requested From:</b>	Japan
Laboratory Reagent For In Vitro Research Use Only	
Not for resale without prior written consent from LifeSpan BioSciences, Inc.	
Created on 9/24/2014	
© 2014 LifeSpan BioSciences	