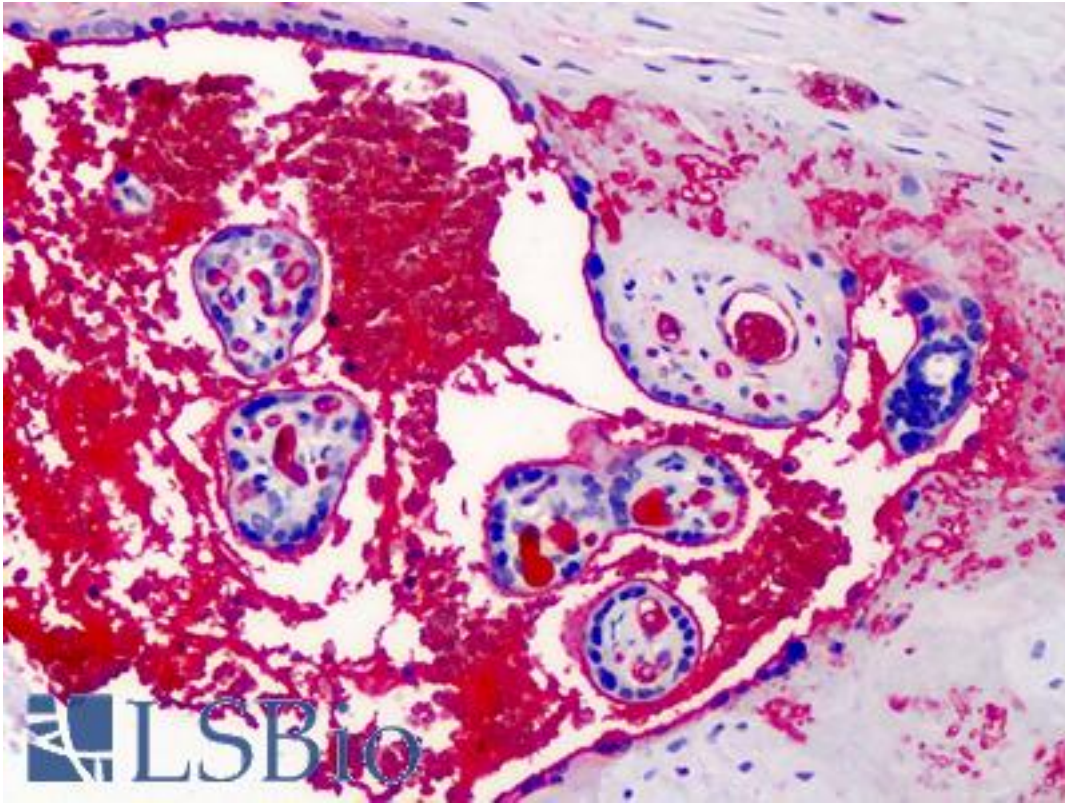


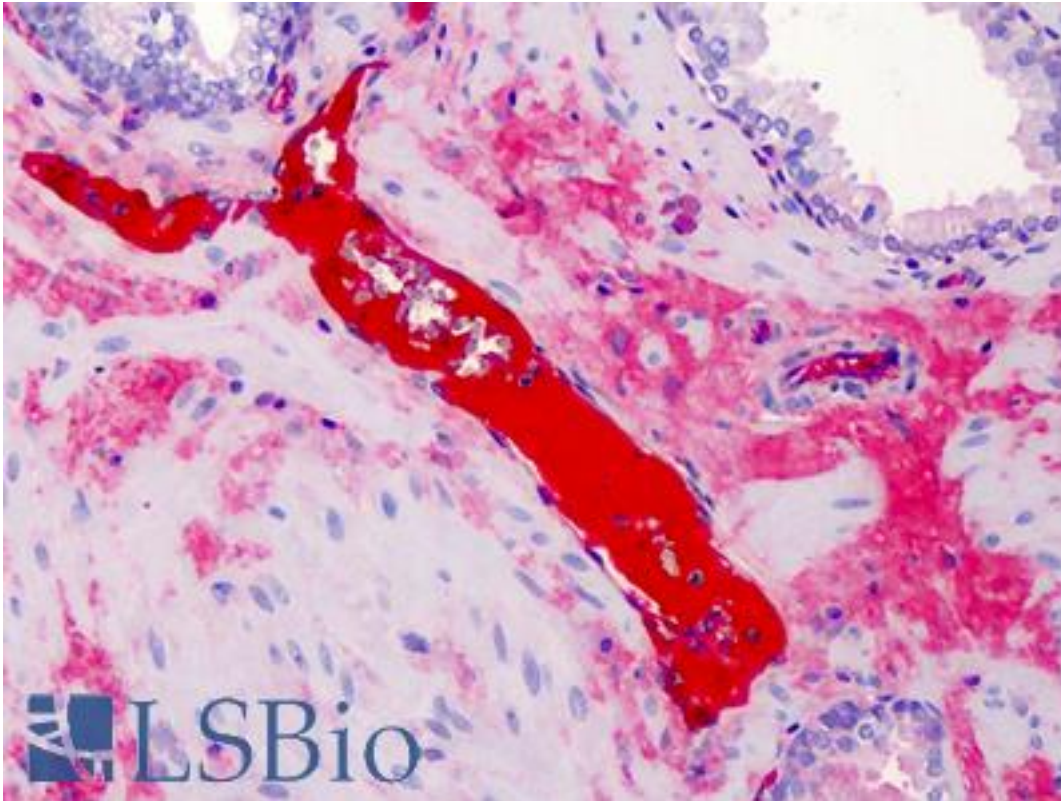
Alpha-2-Macroglobulin / A2M Goat anti-Human Polyclonal Antibody - LS-B4881 - LSBio	
CatalogID:	LS-B4881
Validation:	This antibody replaces catalog number LS-C25306. It has been validated for use in the following assays: IHC-P.
Target:	alpha-2-macroglobulin (A2M)
Synonyms:	A2M Antibody, CPAMD5 Antibody, A2MD Antibody, FWP007 Antibody, Alpha-2-M Antibody, Alpha-2-macroglobulin Antibody, S863-7 Antibody
Host	A2M antibody was produced in Goat
Clonality:	Polyclonal
Isotype:	IgG
Immunogen Species:	Alpha-2-Macroglobulin / A2M antibody was raised against Human
Antigen Type:	Purified protein
Immunogen:	Alpha-2-Macroglobulin / A2M antibody was raised against a2-Macroglobulin from human plasma.
Specificity:	Assay by immunoelectrophoresis resulted in a single precipitin arc against anti-goat serum as well as purified and partially purified a2-Macroglobulin human plasma.
Reactivity:	Human
Purification:	Ion exchange chromatography
Presentation:	PBS, pH 7.2, 0.01% sodium azide.
Recommended Storage:	Short term 4°C, long term aliquot and store at -20°C, avoid freeze thaw cycles.
Uses:	IHC - Paraffin (3.75 µg/ml), Western blot, Immunoprecipitation, ELISA (1:40000 - 1:200000) (Optimal dilution to be determined by the researcher)
Size:	50 µg
Concentration:	1 mg/ml

Immunohistochemistry Image:



Anti-A2M / Alpha-2-Macroglobulin antibody IHC of human placenta. Immunohistochemistry of formalin-fixed, paraffin-embedded tissue after heat-induced antigen retrieval. Antibody LS-B4881 concentration 3.75 ug/ml.

Immunohistochemistry Image:



Anti-A2M / Alpha-2-Macroglobulin antibody IHC of human prostate. Immunohistochemistry of formalin-fixed, paraffin-embedded tissue after heat-induced antigen retrieval. Antibody LS-B4881 concentration 3.75 ug/ml.

Requested From:

Japan

Laboratory Reagent For In Vitro Research Use Only

Not for resale without prior written consent from LifeSpan BioSciences, Inc.

Created on 9/24/2014

© 2014 LifeSpan BioSciences