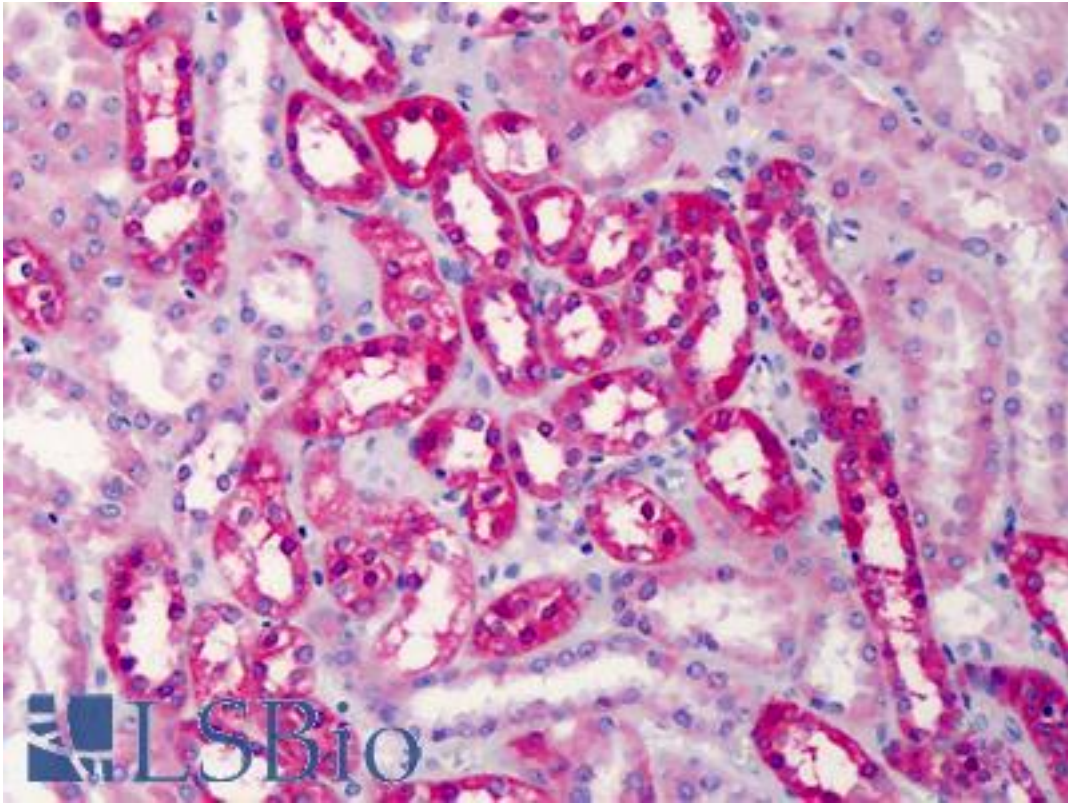


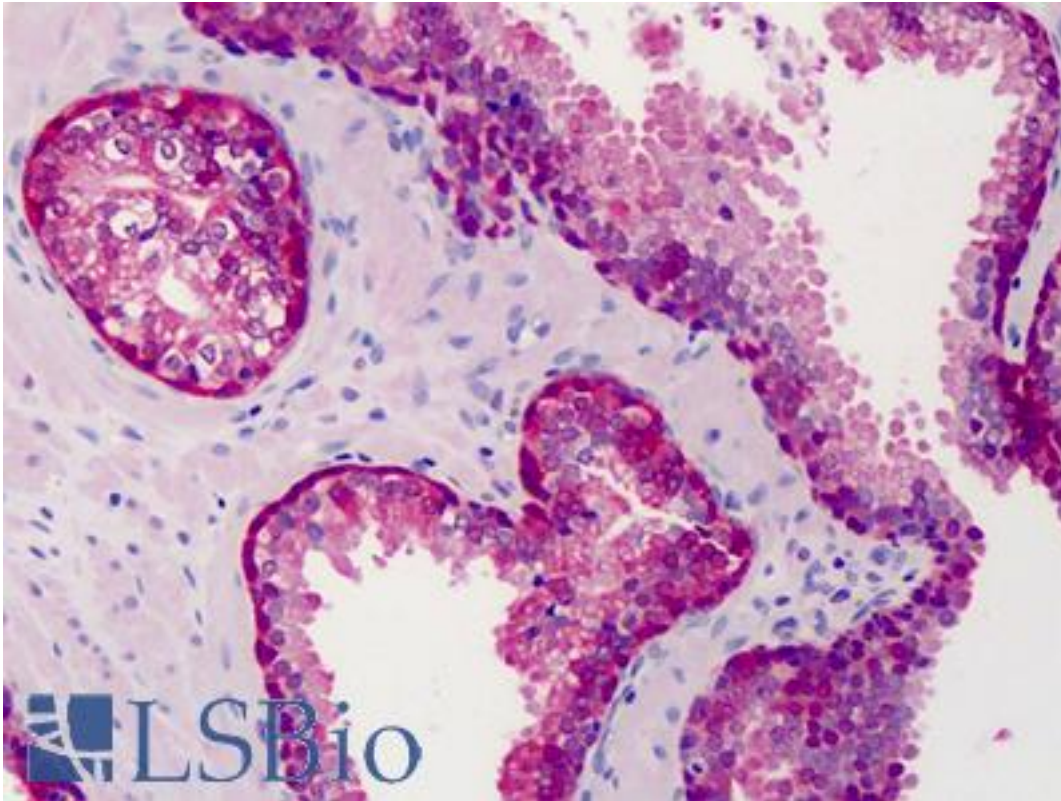
COMT Goat anti-Human Polyclonal (N-Terminus) Antibody - LS-B4880 - LSBio	
CatalogID:	LS-B4880
Validation:	This antibody replaces catalog number LS-C54669. It has been validated for use in the following assays: IHC-P.
Target:	catechol-O-methyltransferase (COMT)
Synonyms:	COMT Antibody, Catechol O-methyltransferase Antibody, Catechol-O-methyltransferase Antibody
Host	COMT antibody was produced in Goat
Clonality:	Polyclonal
Immunogen Species:	COMT antibody was raised against Human
Antigen Type:	Synthetic peptide
Immunogen:	COMT antibody was raised against synthetic peptide GDTKEQRILNHVLQC from the N-terminus of human COMT (NP_000745.1; NP_001128633.1; NP_001128634.1; NP_009294.1). Percent identity by BLAST analysis: Human, Gorilla (100%); Gibbon, Monkey, Marmoset, Panda, Dog (93%); Hamster, Bat, Horse (86%).
Specificity:	Human COMT. This antibody is expected to recognise both reported isoforms. Variants (NP_000745.1; NP_001128633.1; NP_001128634.1) encode the same isoform.
Epitope:	N-Terminus
Reactivity:	Human, Gorilla
Predicted Reactivity:	Gibbon, Monkey, Dog
Purification:	Immunoaffinity purified
Presentation:	Tris-buffered saline, pH 7.3, 0.5% BSA, 0.02% sodium azide
Recommended Storage:	Store at -20°C. Minimize freezing and thawing.
Uses:	IHC - Paraffin (3.75 µg/ml), Western blot (1:4000) & (1 - 3 µg/ml), ELISA (1:4000) (Optimal dilution to be determined by the researcher)
Size:	50 µg
Concentration:	0.5 mg/ml

Immunohistochemistry Image:



Anti-COMT antibody IHC of human kidney. Immunohistochemistry of formalin-fixed, paraffin-embedded tissue after heat-induced antigen retrieval. Antibody LS-B4880 concentration 3.75 ug/ml.

Immunohistochemistry Image:



Anti-COMT antibody IHC of human prostate. Immunohistochemistry of formalin-fixed, paraffin-embedded tissue after heat-induced antigen retrieval. Antibody LS-B4880 concentration 3.75 ug/ml.

Western Blot Image:



Staining of human testis lysate (35 ug protein in RIPA buffer) with A) LS-B4343 (0.03 ug/ml) and B) LS-B4880 (1 ug/ml). Primary incubation was 1 hour. Detected by chemiluminescence.

Requested From:

Japan

Laboratory Reagent For In Vitro Research Use Only

Not for resale without prior written consent from LifeSpan BioSciences, Inc.

Created on 9/24/2014

© 2014 LifeSpan BioSciences