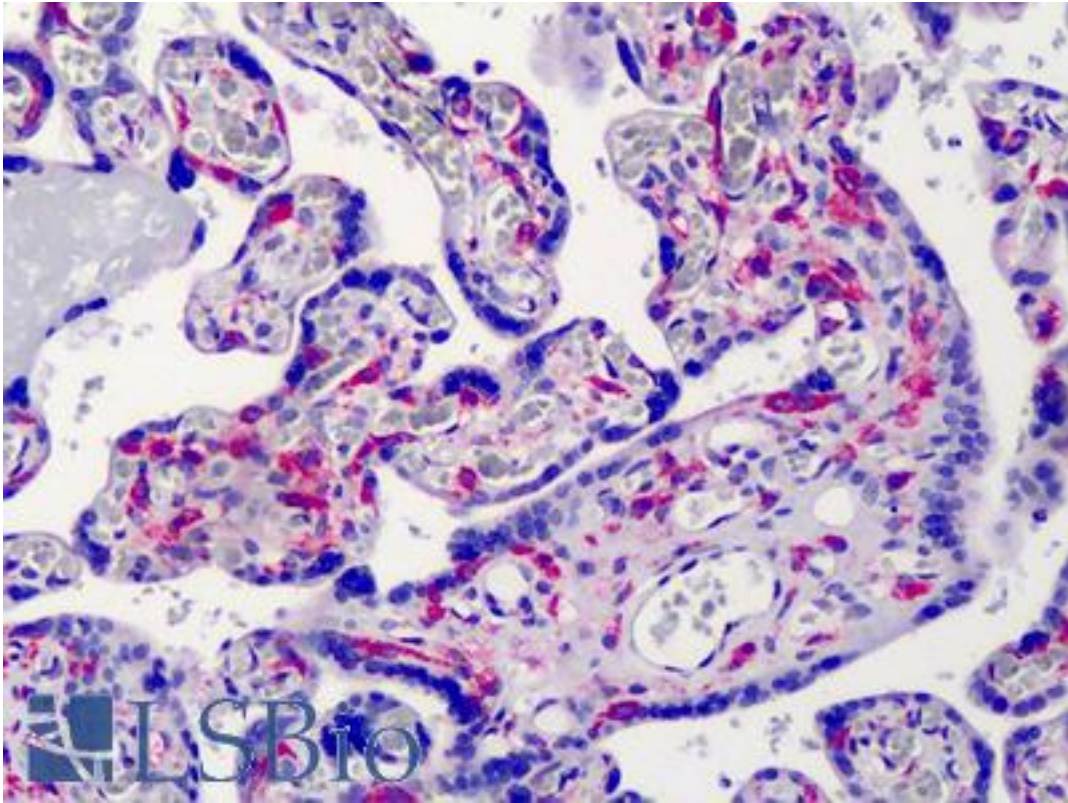


IKBKG / NEMO / IKK Gamma Mouse anti-Human Monoclonal (46B844) Antibody - LS-B4878 - LSBio

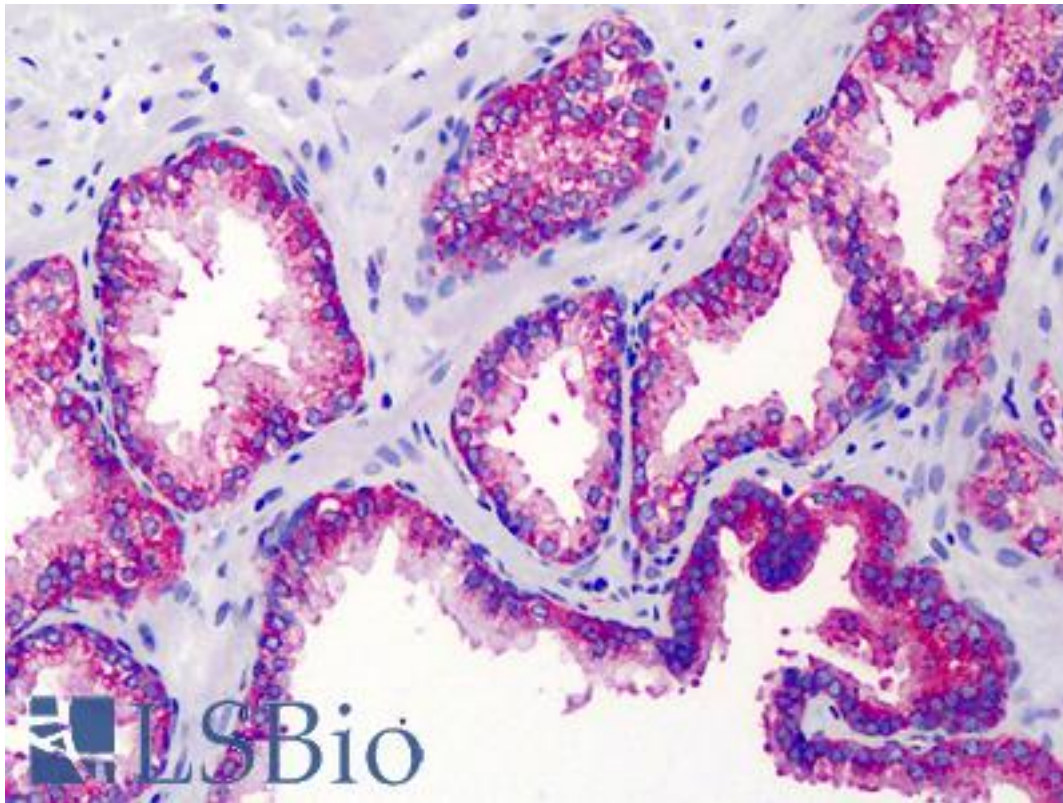
CatalogID:	LS-B4878
Validation:	This antibody replaces catalog number LS-C535. It has been validated for use in the following assays: IHC-P.
Target:	inhibitor of kappa light polypeptide gene enhancer in B-cells, kinase gamma (IKBKG)
Synonyms:	IKBKG Antibody, AMCBX1 Antibody, FIP3 Antibody, Fip3p Antibody, IkappaB kinase gamma Antibody, IKKgamma Antibody, IKK-gamma Antibody, NEMO Antibody, NF-kappa-B essential modifier Antibody, I-kappa-B kinase gamma-subunit Antibody, I-kappa-B kinase subunit gamma Antibody, Ikb kinase gamma subunit Antibody, IKKAP1 Antibody, Incontinentia pigmenti Antibody, IP2 Antibody, IPD2 Antibody, NF-kappa-B essential modulator Antibody, ZC2HC9 Antibody, FIP-3 Antibody, Ikb kinase subunit gamma Antibody, IKKG Antibody, IP1 Antibody, NFkappaB essential modulator Antibody
Family / Subfamily:	Protein Kinase Non Catalytic / IKAPPAB
Host	IKBKG antibody was produced in Mouse
Clonality:	Monoclonal
Isotype:	IgG1
Clone Name:	46B844
Immunogen Species:	IKBKG / NEMO / IKK Gamma antibody was raised against Human
Immunogen:	IKBKG / NEMO / IKK Gamma antibody was raised against recombinant human IKBKG / IKK Gamma.
Specificity:	A His-tagged full-length human IKK3/IKKg protein.
Reactivity:	Human
Purification:	Protein G purified
Presentation:	PBS, 0.2% gelatin, 0.05% sodium azide.
Recommended Storage:	Short term 4°C, long term aliquot and store at -20°C, avoid freeze thaw cycles.
Usage Summary:	Suitable for use in Western blot and flow cytometry (intracellular).
Uses:	IHC - Paraffin (10 µg/ml), Western blot (2 µg/ml), Flow Cytometry (Optimal dilution to be determined by the researcher)
Size:	50 µg
Concentration:	0.5 mg/ml

Immunohistochemistry Image:



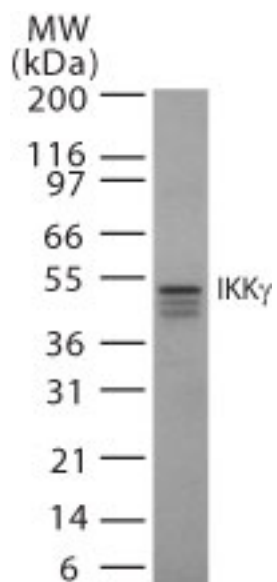
Anti-IKBKG / IKK Gamma antibody IHC of human placenta. Immunohistochemistry of formalin-fixed, paraffin-embedded tissue after heat-induced antigen retrieval. Antibody LS-B4878 concentration 10 ug/ml.

Immunohistochemistry Image:



Anti- IKBKG / IKK Gamma antibody IHC of human prostate. Immunohistochemistry of formalin-fixed, paraffin-embedded tissue after heat-induced antigen retrieval. Antibody LS-B4878 concentration 10 $\mu\text{g}/\text{ml}$.

Western Blot Image:



Western blot of 30 μg of total cell lysate from Jurkat cells with antibody at 2 $\mu\text{g}/\text{ml}$ dilution.

Requested From:

Japan

Laboratory Reagent For In Vitro Research Use Only

Not for resale without prior written consent from LifeSpan BioSciences, Inc.

Created on 9/24/2014

© 2014 LifeSpan BioSciences