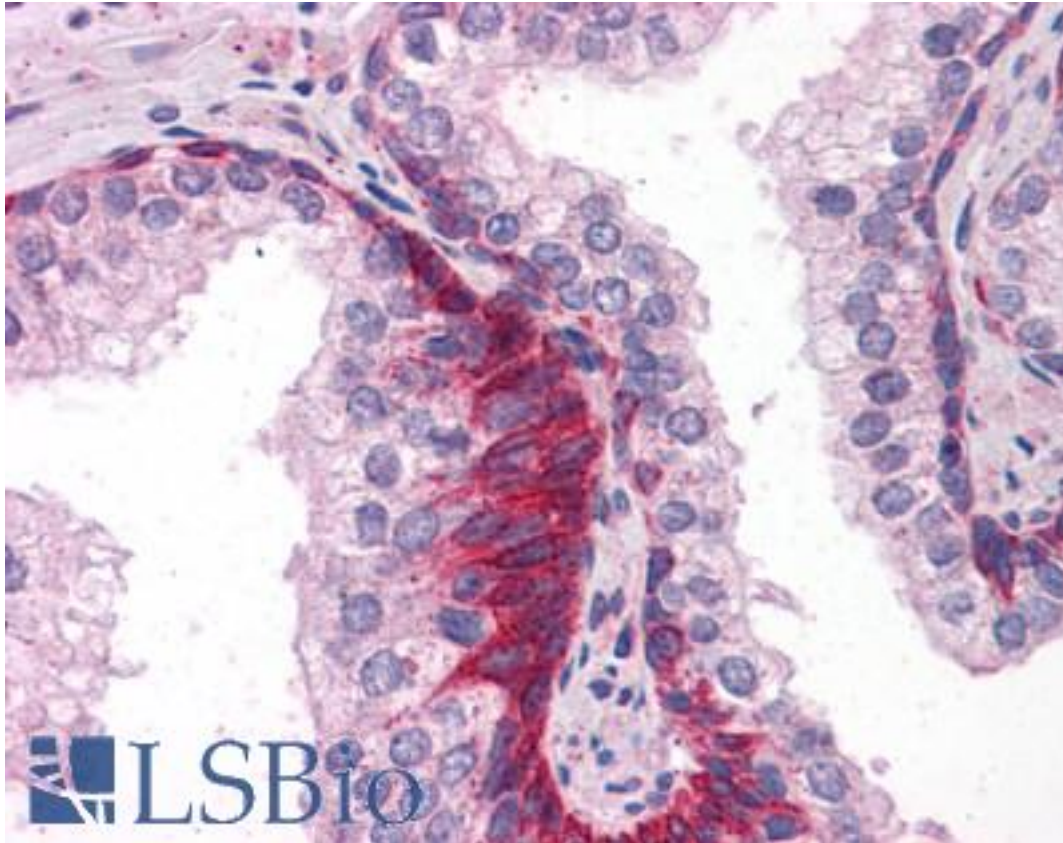


TRAF6 Rabbit anti-Human Polyclonal Antibody - LS-B4867 - LSBio

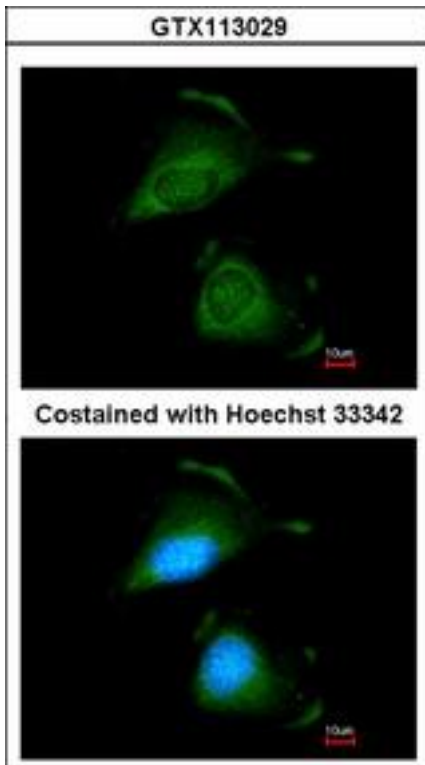
CatalogID:	LS-B4867
Validation:	This antibody replaces catalog number LS-C109486. It has been validated for use in the following assays: IHC-P.
Target:	TNF receptor-associated factor 6, E3 ubiquitin protein ligase (TRAF6)
Synonyms:	TRAF6 Antibody, RING finger protein 85 Antibody, MGC:3310 Antibody, RNF85 Antibody
Host	TRAF6 antibody was produced in Rabbit
Clonality:	Polyclonal
Immunogen Species:	TRAF6 antibody was raised against Human
Immunogen:	TRAF6 antibody was raised against recombinant protein fragment containing a sequence corresponding to a region within amino acids 194 and 378 of TRAF6.
Specificity:	Human TRAF6. Predicted cross-reactivity based on amino acid sequence homology: bovine (82%), pig (83%), monkey (97%).
Reactivity:	Human
Purification:	Immunoaffinity purified
Presentation:	0.1 M Tris-glycine, pH 7, 10% Glycerol, 0.01% Thimerosal
Recommended Storage:	Aliquot and store at -20°C. Minimize freezing and thawing.
Uses:	IHC - Paraffin (10 µg/ml), ICC (1:100 - 1:200), Immunofluorescence (1:100 - 1:200), Western blot (1:500 - 1:3000) (Optimal dilution to be determined by the researcher)
Size:	100 µl
Concentration:	0.38 mg/ml

Immunohistochemistry Image:



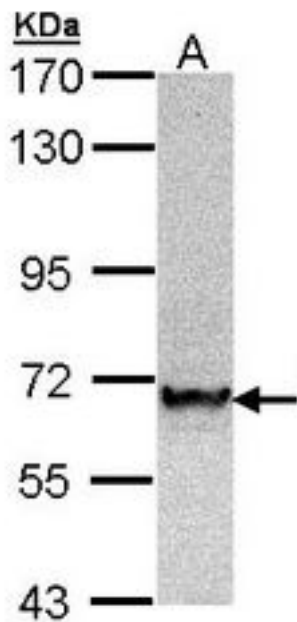
Anti-TRAF6 antibody IHC of human prostate. Immunohistochemistry of formalin-fixed, paraffin-embedded tissue after heat-induced antigen retrieval. Antibody LS-B4867 concentration 10 ug/ml.

Immunofluorescence Image:



Immunofluorescence of methanol-fixed HeLa, using TRAF6 antibody at 1:200 dilution.

Western Blot Image:



Sample (30 ug of whole cell lysate). A: Hep G2. 7.5% SDS PAGE. TRAF6 antibody diluted at 1:1000.

Requested From:	Japan
Laboratory Reagent For In Vitro Research Use Only	
Not for resale without prior written consent from LifeSpan BioSciences, Inc.	
Created on 9/24/2014	
© 2014 LifeSpan BioSciences	