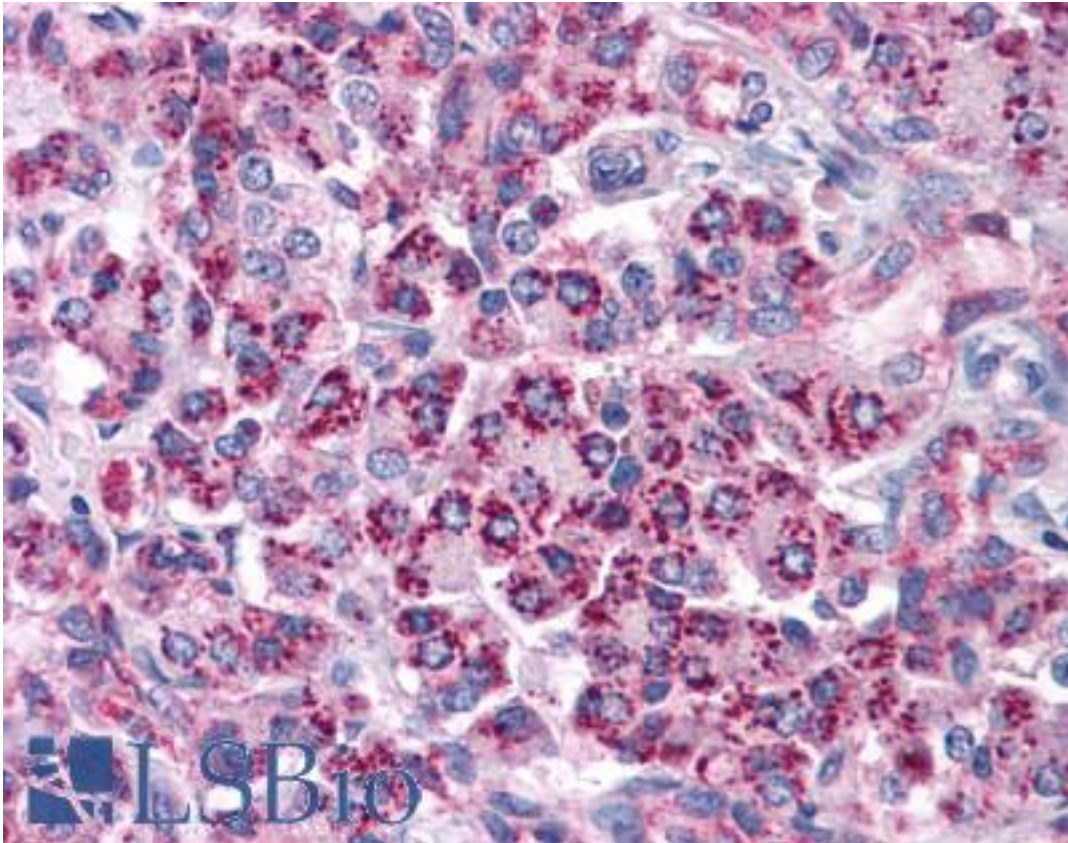


**TLR3 Rabbit anti-Human Polyclonal Antibody - LS-B4866 - LSBio**

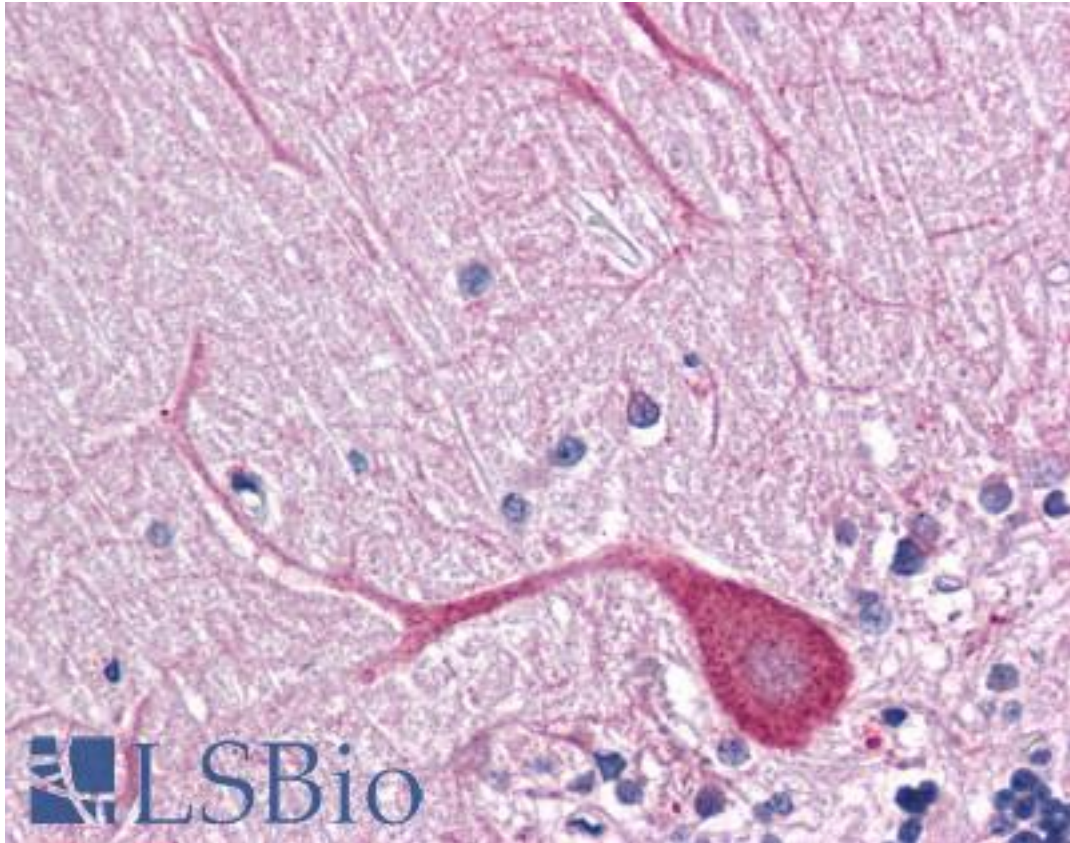
<b>CatalogID:</b>	LS-B4866
<b>Validation:</b>	This antibody replaces catalog number LS-C109485. It has been validated for use in the following assays: IHC-P.
<b>Target:</b>	toll-like receptor 3 (TLR3)
<b>Synonyms:</b>	TLR3 Antibody, CD283 Antibody, Toll-like receptor 3 Antibody, CD283 antigen Antibody, IIAE2 Antibody
<b>Family / Subfamily:</b>	Toll-like Receptor / not assigned-Toll-like Receptor
<b>Host</b>	TLR3 antibody was produced in Rabbit
<b>Clonality:</b>	Polyclonal
<b>Immunogen Species:</b>	TLR3 antibody was raised against Human
<b>Immunogen:</b>	TLR3 antibody was raised against recombinant protein fragment containing a sequence corresponding to a region within amino acids 514 and 657 of TLR3.
<b>Specificity:</b>	Human TLR3. Predicted cross-reactivity based on amino acid sequence homology: mouse (81%), guinea pig (84%), rat (83%), rabbit (82%), bovine (86%), cat (86%), pig (84%), monkey (96%).
<b>Reactivity:</b>	Human
<b>Purification:</b>	Immunoaffinity purified
<b>Presentation:</b>	0.1 M Tris-glycine, pH 7, 10% Glycerol, 0.01% Thimerosal
<b>Recommended Storage:</b>	Aliquot and store at -20°C. Minimize freezing and thawing.
<b>Uses:</b>	IHC - Paraffin (10 µg/ml), ICC, Immunofluorescence (1:100 - 1:200), Western blot (1:1000 - 1:10000) (Optimal dilution to be determined by the researcher)
<b>Size:</b>	50 µl
<b>Concentration:</b>	1 mg/ml

**Immunohistochemistry Image:**



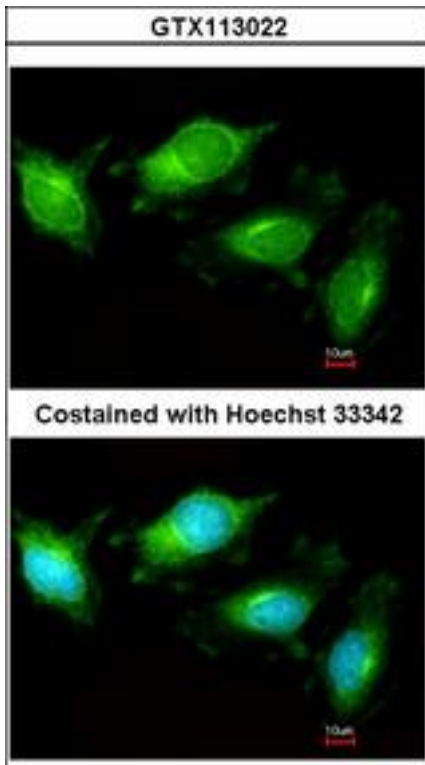
Anti-TLR3 antibody IHC of human pancreas. Immunohistochemistry of formalin-fixed, paraffin-embedded tissue after heat-induced antigen retrieval. Antibody LS-B4866 concentration 10 ug/ml.

**Immunohistochemistry Image:**



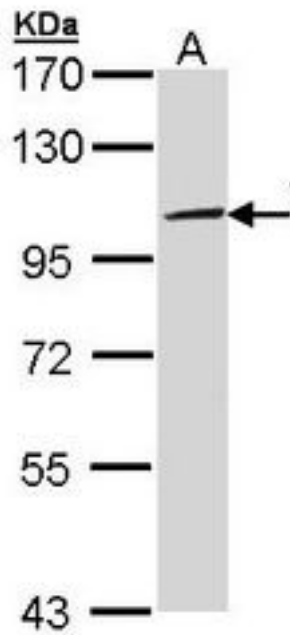
Anti-TLR3 antibody IHC of human brain, cerebellum. Immunohistochemistry of formalin-fixed, paraffin-embedded tissue after heat-induced antigen retrieval. Antibody LS-B4866 concentration 10 ug/ml.

**Immunofluorescence Image:**



Immunofluorescence of methanol-fixed HeLa, using TLR3 antibody at 1:200 dilution.

**Western Blot Image:**



Sample (30 ug of whole cell lysate). A: Molt-4. 7.5% SDS PAGE. TLR3 antibody diluted at 1:5000.

<b>Requested From:</b>	Japan
Laboratory Reagent For In Vitro Research Use Only	
Not for resale without prior written consent from LifeSpan BioSciences, Inc.	
Created on 9/24/2014	
© 2014 LifeSpan BioSciences	