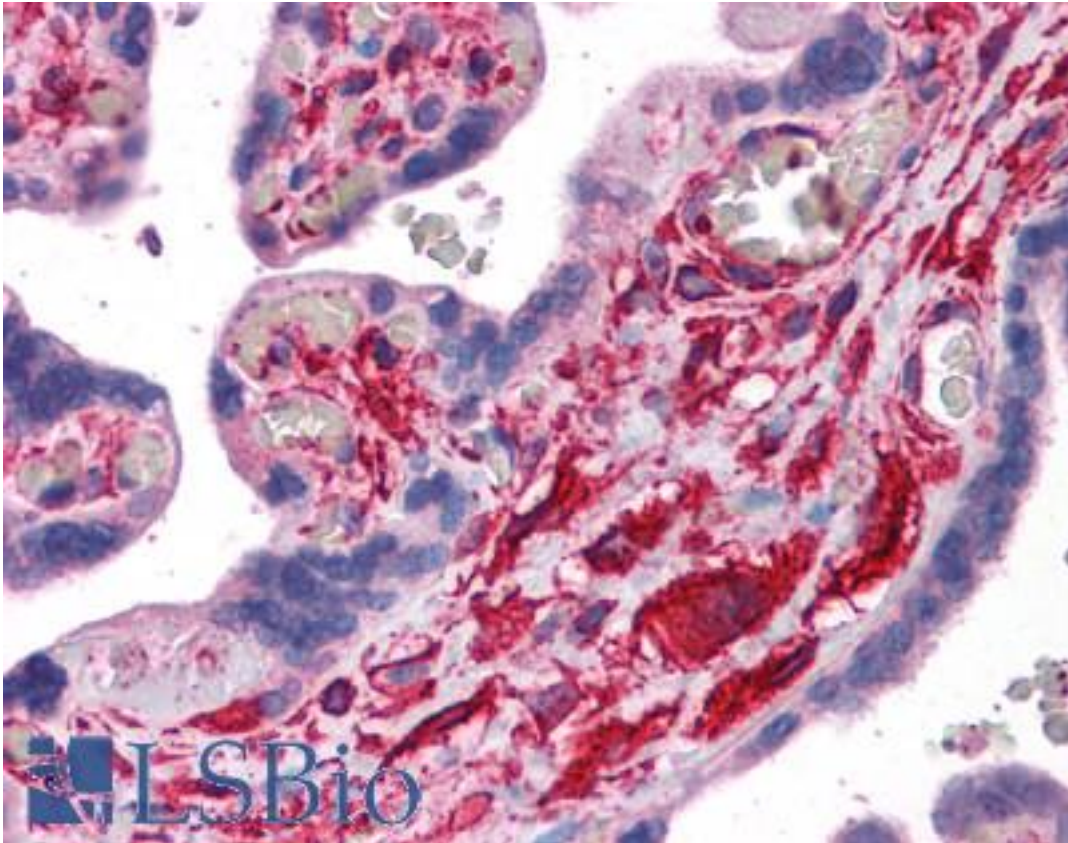


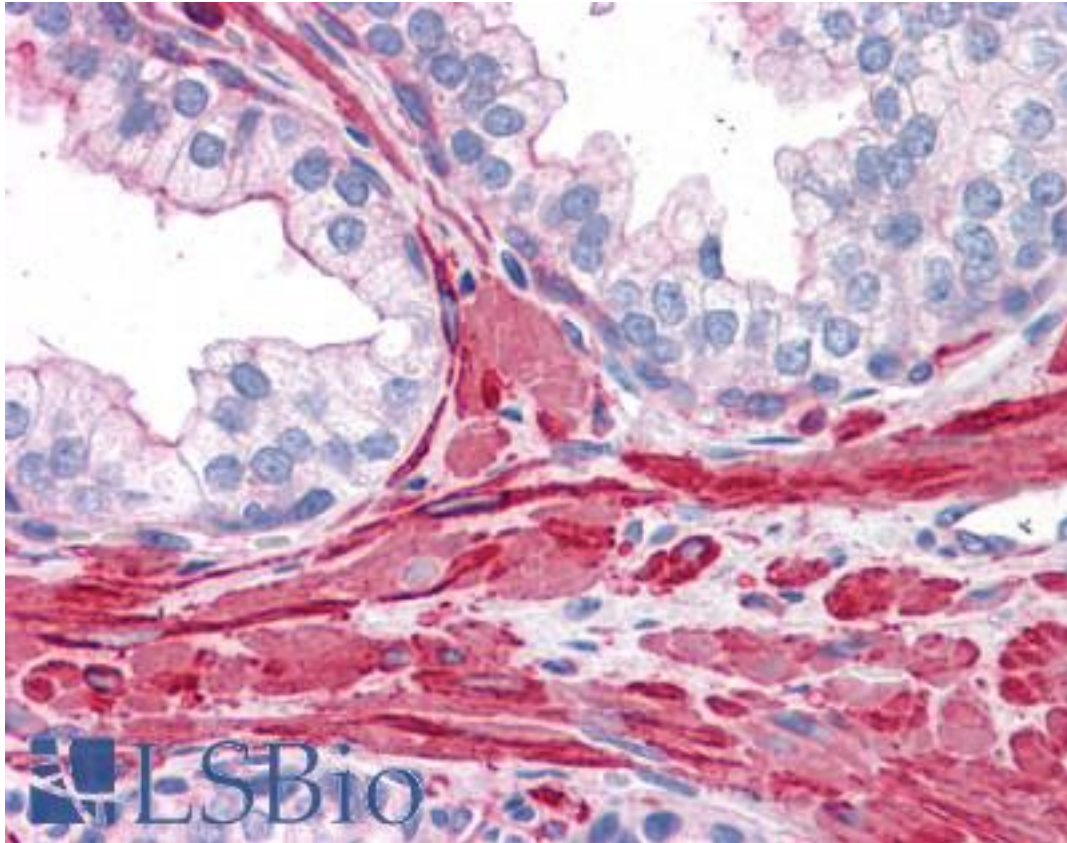
| FLNA / Filamin A Rabbit anti-Human Polyclonal Antibody - LS-B4865 - LSBio | |
|---|---|
| CatalogID: | LS-B4865 |
| Validation: | This antibody replaces catalog number LS-C109481. It has been validated for use in the following assays: IHC-P. |
| Target: | filamin A, alpha (FLNA) |
| Synonyms: | FLNA Antibody, ABPX Antibody, Actin binding protein 280 Antibody, Actin-binding protein 280 Antibody, Filamin A Antibody, FLN1 Antibody, FMD Antibody, Filamin-A Antibody, Filamin-1 Antibody, FLN Antibody, FLN-A Antibody, Non-muscle filamin Antibody, OPD1 Antibody, OPD2 Antibody, Alpha-filamin Antibody, NHBP Antibody, OPD Antibody, XMVD Antibody, CVD1 Antibody, Filamin A, alpha Antibody, MNS Antibody, XLVD Antibody |
| Host | FLNA antibody was produced in Rabbit |
| Clonality: | Polyclonal |
| Immunogen Species: | FLNA / Filamin A antibody was raised against Human |
| Immunogen: | FLNA / Filamin A antibody was raised against recombinant protein fragment containing a sequence corresponding to a region within amino acids 1819 and 2068 of Filamin A alpha 2. |
| Specificity: | Human Filamin A alpha 2. Predicted cross-reactivity based on amino acid sequence homology: mouse (98%), rat (98%), rabbit (98%). |
| Reactivity: | Human |
| Purification: | Immunoaffinity purified |
| Presentation: | 0.1 M Tris-glycine, pH 7, 20% Glycerol, 0.01% Thimerosal |
| Recommended Storage: | Aliquot and store at -20°C. Minimize freezing and thawing. |
| Uses: | IHC - Paraffin (10 µg/ml), ICC (1:100 - 1:200), Immunofluorescence (1:100 - 1:200), Western blot (1:500 - 1:3000) (Optimal dilution to be determined by the researcher) |
| Size: | 100 µl |
| Concentration: | 0.42 mg/ml |

Immunohistochemistry Image:



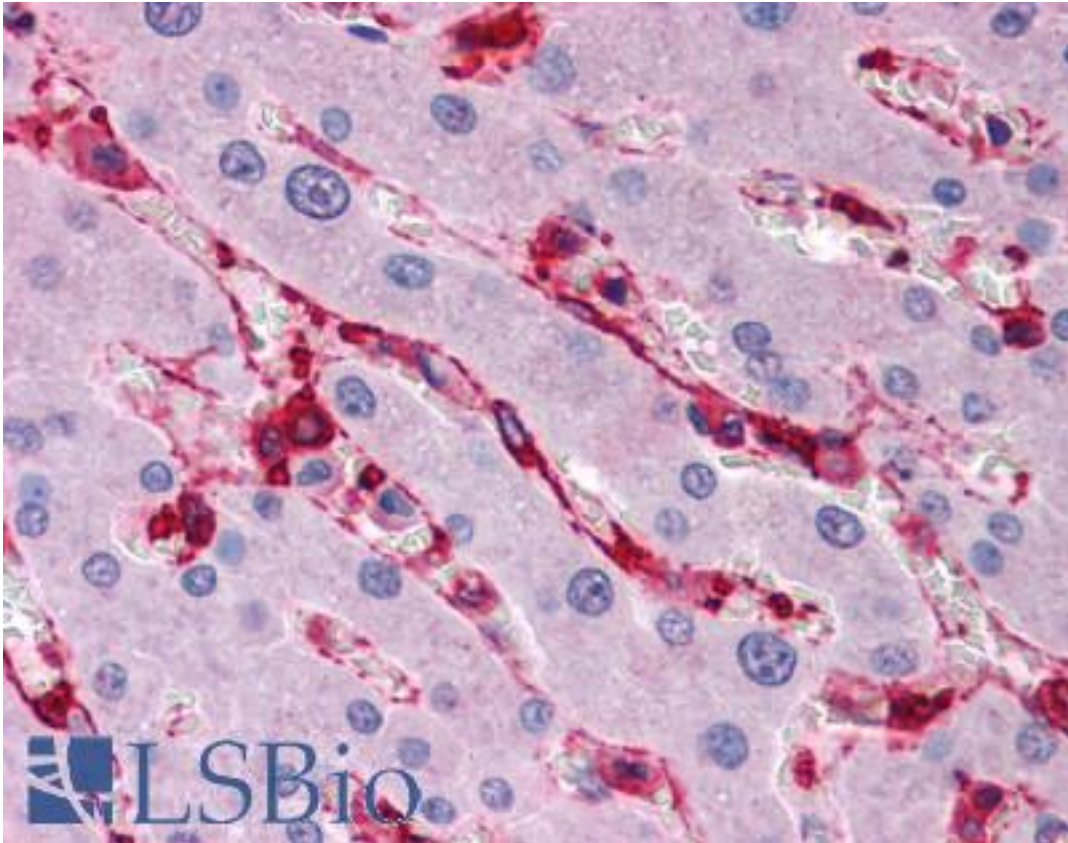
Anti-FLNA / FMD antibody IHC of human placenta. Immunohistochemistry of formalin-fixed, paraffin-embedded tissue after heat-induced antigen retrieval. Antibody LS-B4865 concentration 10 ug/ml.

Immunohistochemistry Image:



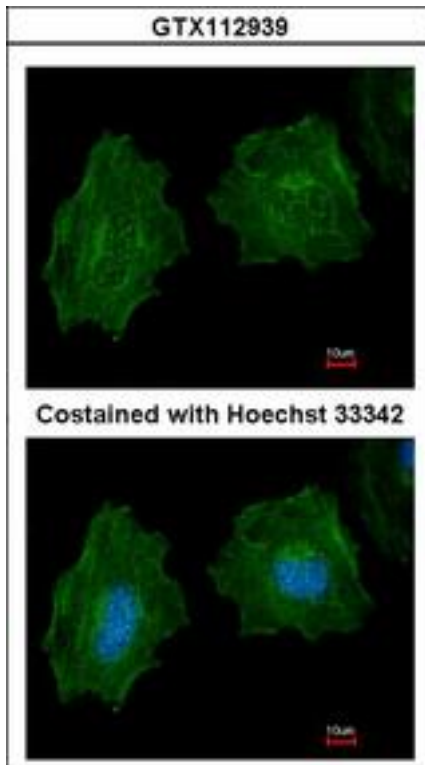
Anti-FLNA / FMD antibody IHC of human prostate. Immunohistochemistry of formalin-fixed, paraffin-embedded tissue after heat-induced antigen retrieval. Antibody LS-B4865 concentration 10 ug/ml.

Immunohistochemistry Image:



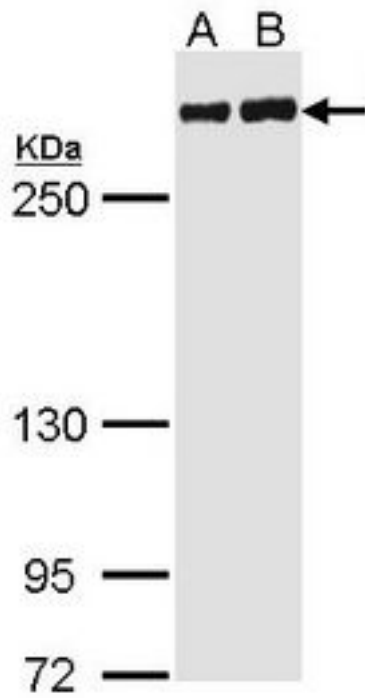
Anti-FLNA / FMD antibody IHC of human liver. Immunohistochemistry of formalin-fixed, paraffin-embedded tissue after heat-induced antigen retrieval. Antibody LS-B4865 concentration 10 ug/ml.

Immunofluorescence Image:



Immunofluorescence of methanol-fixed HeLa, using Filamin A alpha 2 antibody at 1:200 dilution.

Western Blot Image:



Sample (30 ug of whole cell lysate). A: H1299. B: Hep G2. 5% SDS PAGE. FLNA antibody diluted at 1:1000.

Requested From:

Japan

Laboratory Reagent For In Vitro Research Use Only

Not for resale without prior written consent from LifeSpan BioSciences, Inc.

Created on 9/24/2014

© 2014 LifeSpan BioSciences