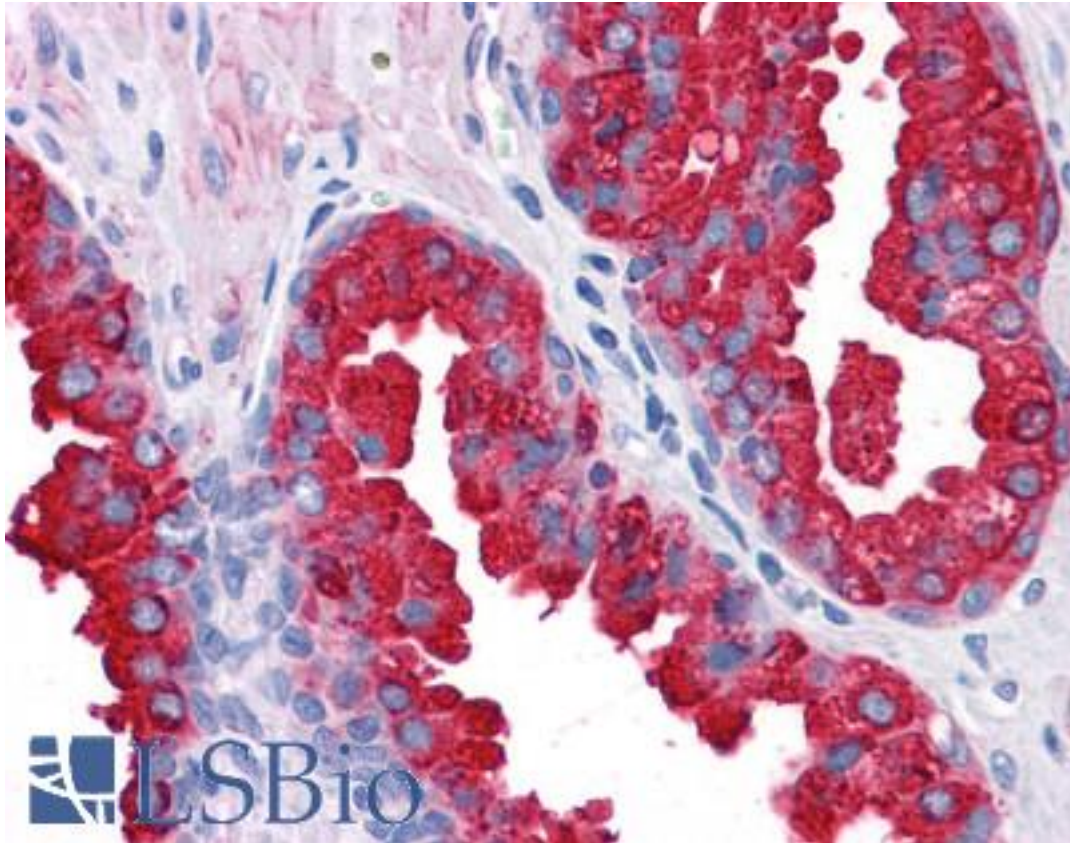


**ERG Rabbit anti-Human Polyclonal Antibody - LS-B4864 - LSBio**

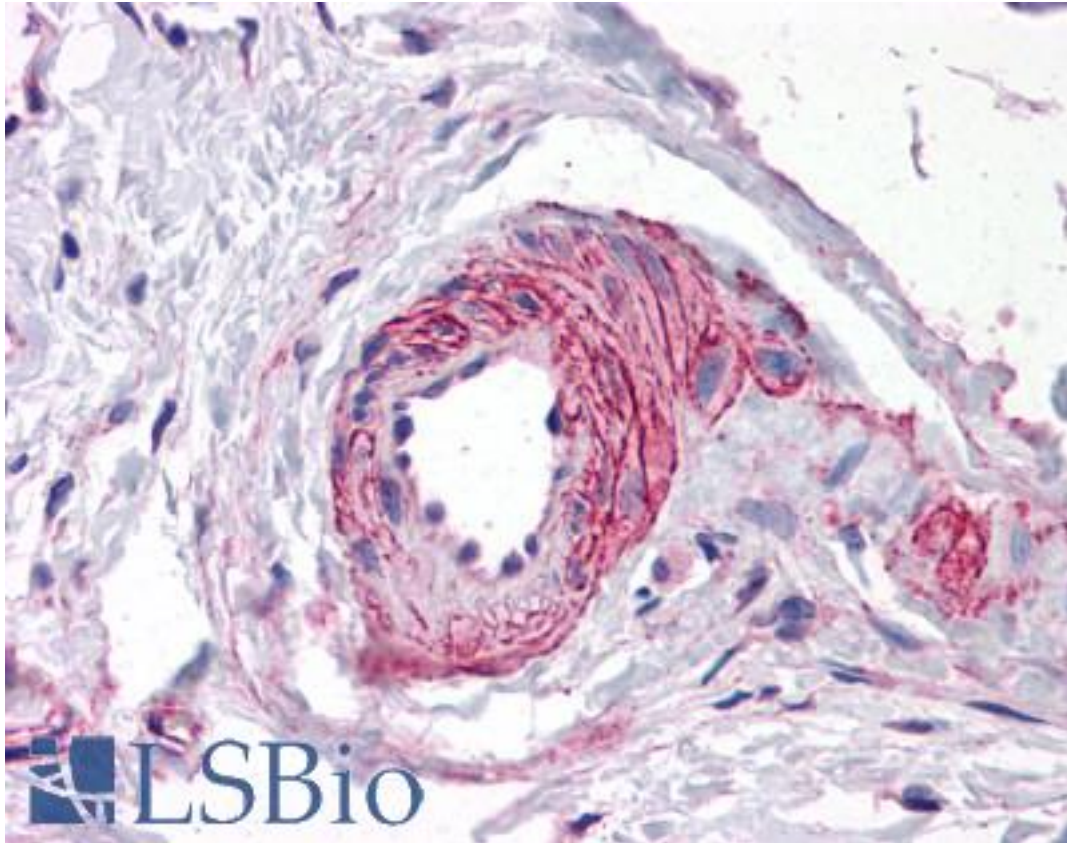
|                             |  |
|-----------------------------|--|
| <b>CatalogID:</b>           | LS-B4864   |
| <b>Validation:</b>          | This antibody replaces catalog number LS-C109480. It has been validated for use in the following assays: IHC-P.  |
| <b>Target:</b>              | v-ets avian erythroblastosis virus E26 oncogene homolog (ERG)  |
| <b>Synonyms:</b>            | ERG Antibody, ERG-3 Antibody, Ets-related Antibody, TMPRSS2/ERG fusion Antibody, Transcriptional regulator ERG Antibody, p55 Antibody, Transforming protein ERG Antibody |
| <b>Host</b>                 | ERG antibody was produced in Rabbit  |
| <b>Clonality:</b>           | Polyclonal   |
| <b>Immunogen Species:</b>   | ERG antibody was raised against Human  |
| <b>Immunogen:</b>           | ERG antibody was raised against recombinant protein fragment containing a sequence corresponding to a region within amino acids 1 and 160 of Human ERG.                  |
| <b>Specificity:</b>         | Human ERG. Predicted cross-reactivity based on amino acid sequence homology: mouse (97%), rat (97%), bovine (95%).   |
| <b>Reactivity:</b>          | Human  |
| <b>Purification:</b>        | Immunoaffinity purified  |
| <b>Presentation:</b>        | 0.1 M Tris-glycine, pH 7, 10% Glycerol, 0.01% Thimerosal   |
| <b>Recommended Storage:</b> | Aliquot and store at -20°C. Minimize freezing and thawing.   |
| <b>Uses:</b>                | IHC - Paraffin (10 µg/ml), ICC, Immunofluorescence (1:100 - 1:200), Western blot (1:500 - 1:3000) (Optimal dilution to be determined by the researcher)                  |
| <b>Size:</b>                | 100 µl   |
| <b>Concentration:</b>       | 0.38 mg/ml   |

**Immunohistochemistry Image:**



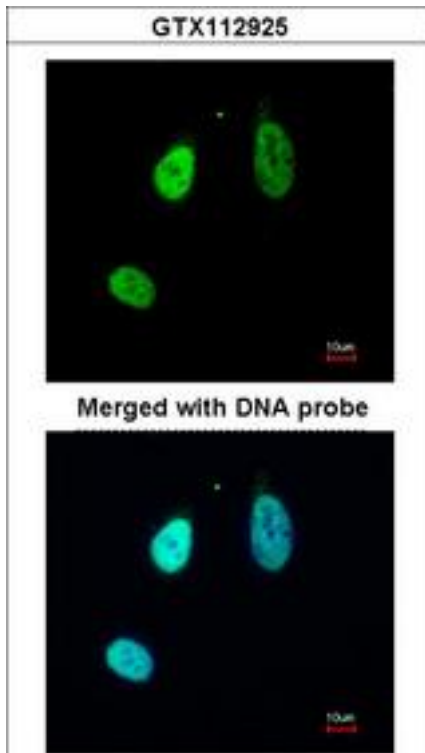
Anti-ERG antibody IHC of human prostate. Immunohistochemistry of formalin-fixed, paraffin-embedded tissue after heat-induced antigen retrieval. Antibody LS-B4864 concentration 10 ug/ml.

**Immunohistochemistry Image:**



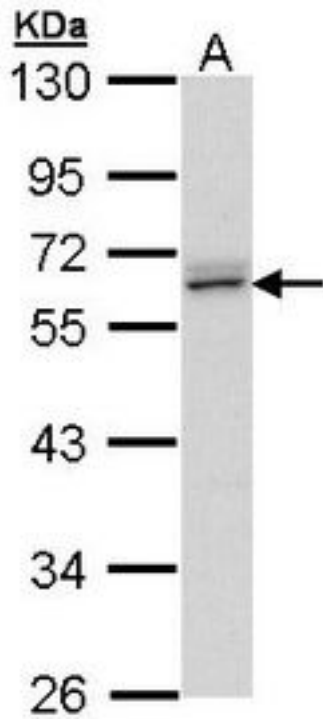
Anti-ERG antibody IHC of human vessel. Immunohistochemistry of formalin-fixed, paraffin-embedded tissue after heat-induced antigen retrieval. Antibody LS-B4864 concentration 10 ug/ml.

**Immunofluorescence Image:**



Immunofluorescence of paraformaldehyde-fixed HeLa, using ERG antibody at 1:200 dilution.

**Western Blot Image:**



Sample (30 ug of whole cell lysate). A: HeLa. B: Hep G2. 10% SDS PAGE. ERG antibody diluted at 1:1000.

**Requested From:**

Japan

Laboratory Reagent For In Vitro Research Use Only

Not for resale without prior written consent from LifeSpan BioSciences, Inc.

Created on 9/24/2014

© 2014 LifeSpan BioSciences