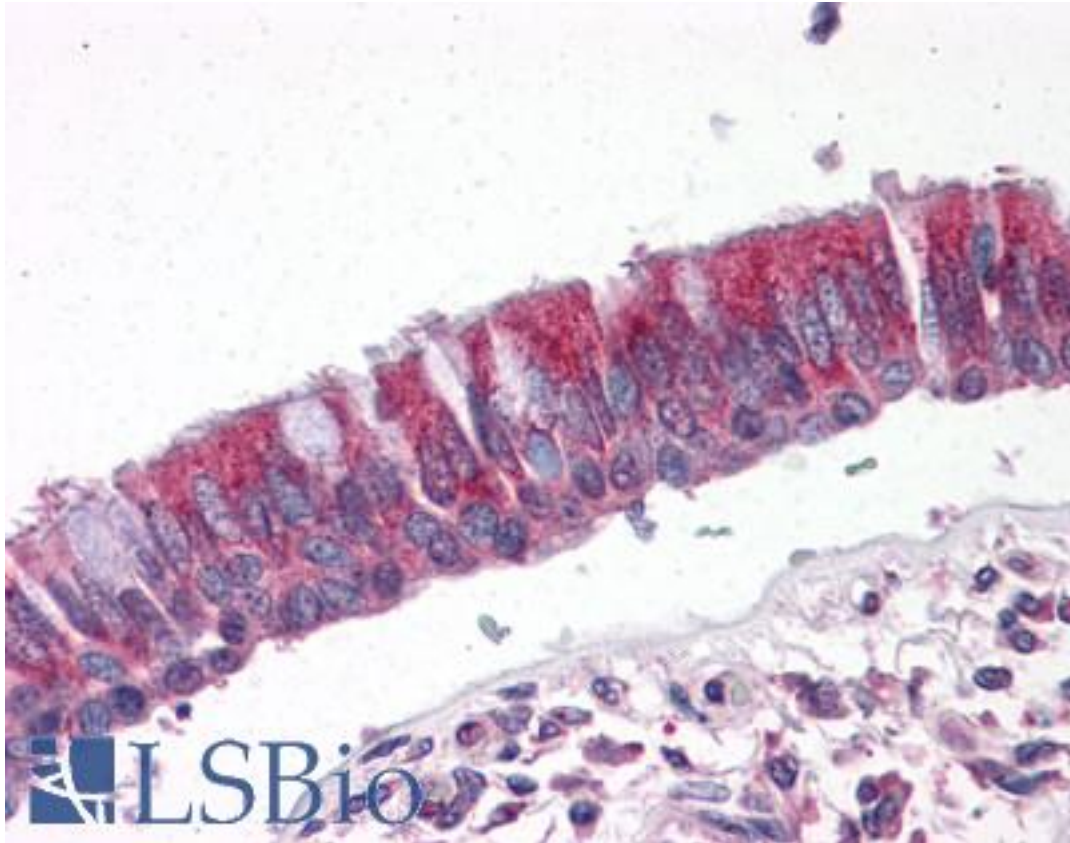


CCT2 / CCT Beta Rabbit anti-Human Polyclonal Antibody - LS-B4861 - LSBio

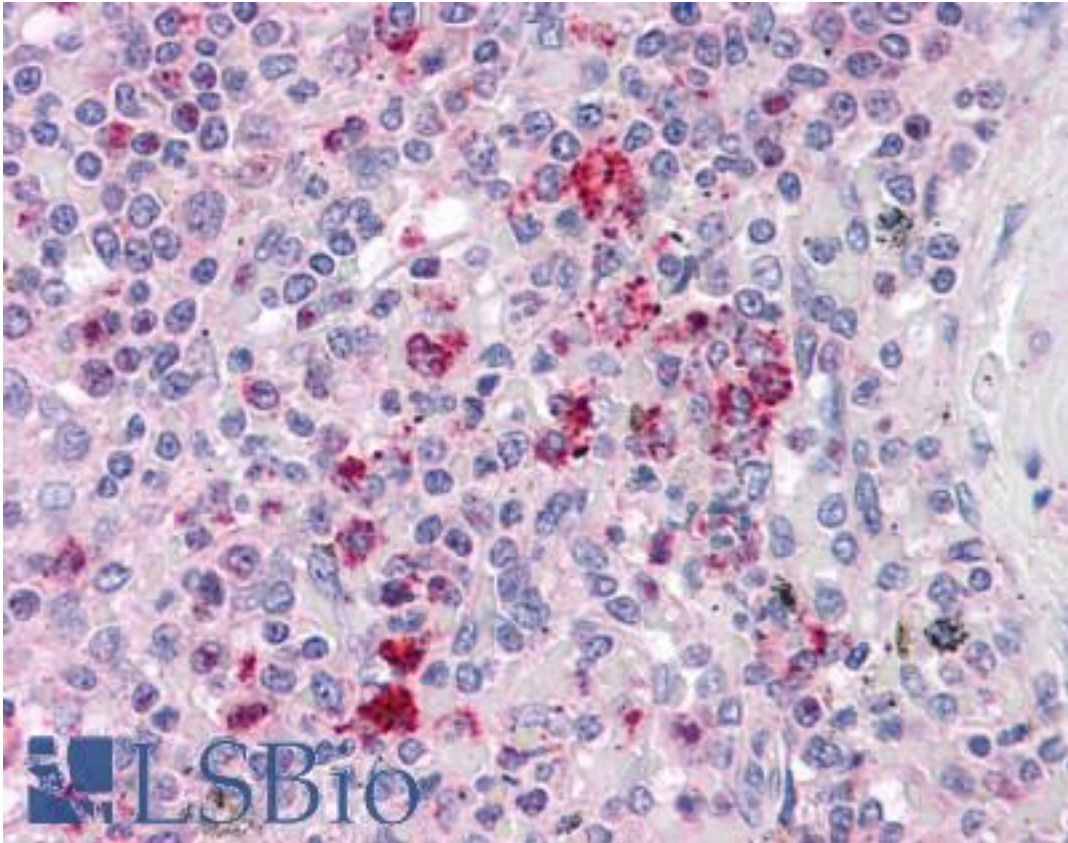
CatalogID:	LS-B4861
Validation:	This antibody replaces catalog number LS-C109475. It has been validated for use in the following assays: IHC-P.
Target:	chaperonin containing TCP1, subunit 2 (beta) (CCT2)
Synonyms:	CCT2 Antibody, 99D8.1 Antibody, CCT-beta Antibody, CCTB Antibody, PRO1633 Antibody, TCP-1-beta Antibody, TCP1 Beta Antibody
Host	CCT2 antibody was produced in Rabbit
Clonality:	Polyclonal
Immunogen Species:	CCT2 / CCT Beta antibody was raised against Human
Immunogen:	CCT2 / CCT Beta antibody was raised against recombinant protein fragment containing a sequence corresponding to a region within amino acids 277 and 473 of Human TCP1 beta.
Specificity:	Human TCP1 beta. Predicted cross-reactivity based on amino acid sequence homology: mouse (97%), rat (97%), rabbit (100%), bovine (98%), pig (100%), zebrafish (87%).
Reactivity:	Human
Purification:	Immunoaffinity purified
Presentation:	0.1 M Tris-glycine, pH 7, 10% Glycerol, 0.01% Thimerosal
Recommended Storage:	Aliquot and store at -20°C. Minimize freezing and thawing.
Uses:	IHC - Paraffin (10 µg/ml), Western blot (1:500 - 1:3000) (Optimal dilution to be determined by the researcher)
Size:	50 µl
Concentration:	1 mg/ml

Immunohistochemistry Image:



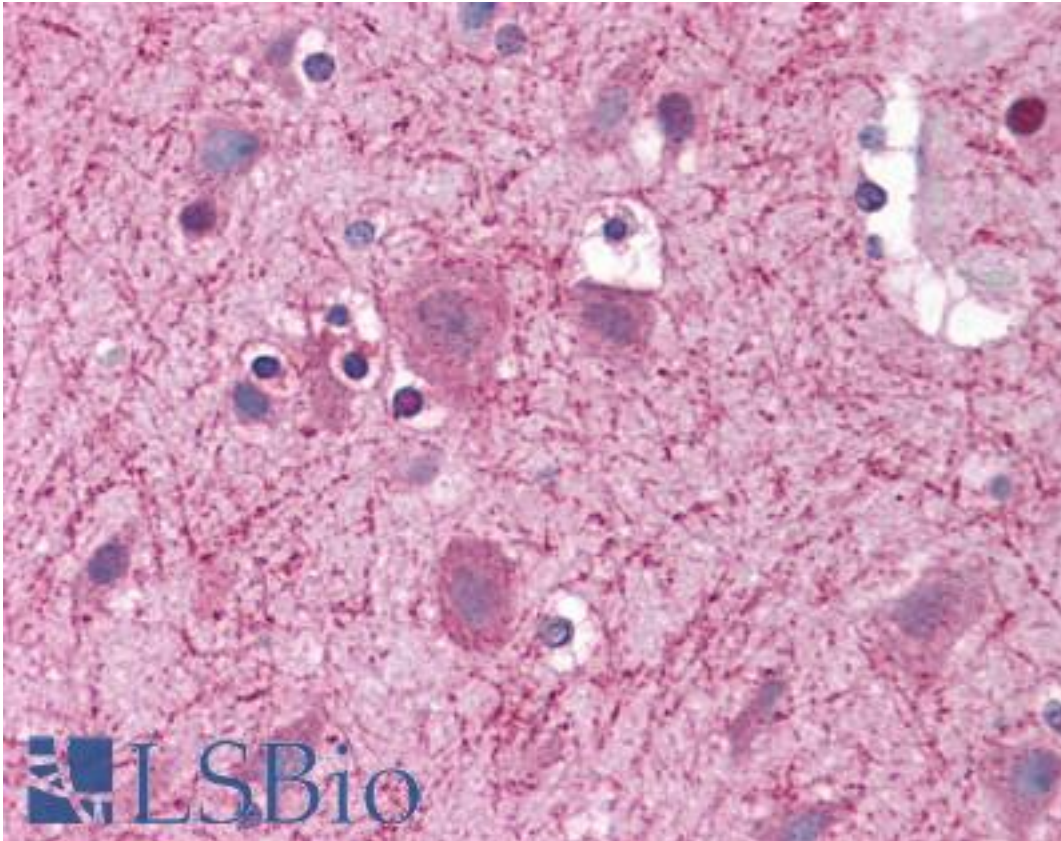
Anti-CCT2 antibody IHC of human lung, respiratory epithelium. Immunohistochemistry of formalin-fixed, paraffin-embedded tissue after heat-induced antigen retrieval. Antibody LS-B4861 concentration 10 ug/ml.

Immunohistochemistry Image:



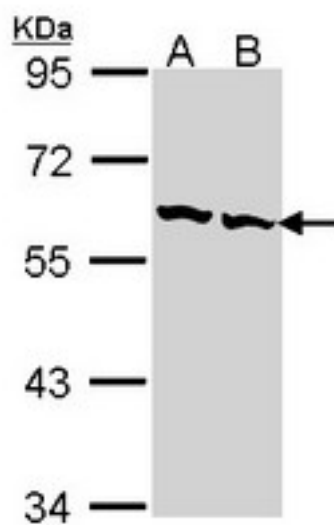
Anti-CCT2 antibody IHC of human spleen. Immunohistochemistry of formalin-fixed, paraffin-embedded tissue after heat-induced antigen retrieval. Antibody LS-B4861 concentration 10 ug/ml.

Immunohistochemistry Image:



Anti-CCT2 antibody IHC of human brain, cortex. Immunohistochemistry of formalin-fixed, paraffin-embedded tissue after heat-induced antigen retrieval. Antibody LS-B4861 concentration 10 ug/ml.

Western Blot Image:



Sample (30 ug of whole cell lysate). A: Hep G2. B: Raji. 7.5% SDS PAGE. CCT2 antibody diluted at 1:1000.

Requested From:	Japan
Laboratory Reagent For In Vitro Research Use Only	
Not for resale without prior written consent from LifeSpan BioSciences, Inc.	
Created on 9/24/2014	
© 2014 LifeSpan BioSciences	