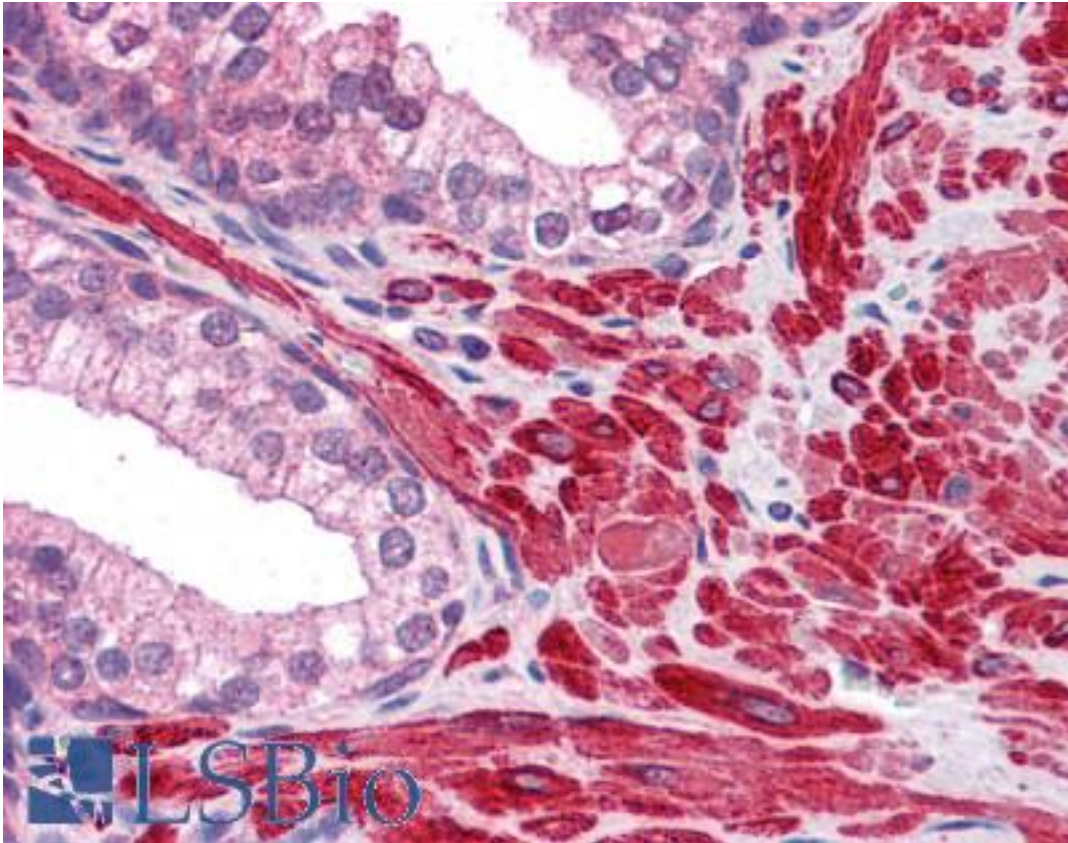


Dipeptidylpeptidase 8 / DPP8 Rabbit anti-Human Polyclonal Antibody - LS-B4859 - LSBio

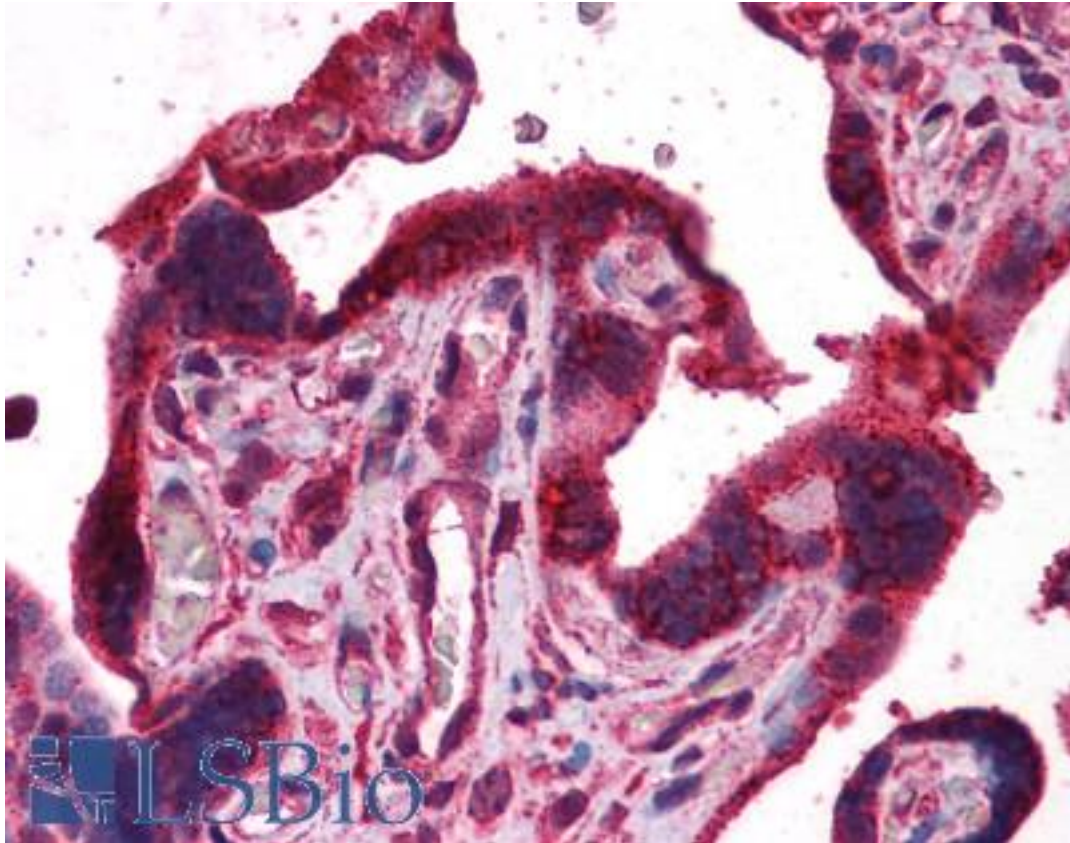
CatalogID:	LS-B4859
Validation:	This antibody replaces catalog number LS-C109467. It has been validated for use in the following assays: IHC-P.
Target:	dipeptidyl-peptidase 8 (DPP8)
Synonyms:	DPP8 Antibody, Dipeptidyl-peptidase 8 Antibody, DPRP1 Antibody, Dipeptidyl peptidase VIII Antibody, Dipeptidylpeptidase 8 Antibody, DPRP-1 Antibody, Dipeptidyl peptidase 8 Antibody, MSTP141 Antibody, Prolyl dipeptidase DPP8 Antibody, DP8 Antibody, DPP VIII Antibody
Family / Subfamily:	Protease / Serine S9B
Host	DPP8 antibody was produced in Rabbit
Clonality:	Polyclonal
Immunogen Species:	Dipeptidylpeptidase 8 / DPP8 antibody was raised against Human
Immunogen:	Dipeptidylpeptidase 8 / DPP8 antibody was raised against synthetic peptide containing a sequence corresponding to a region within amino acids 1 and 39 of DPRP1 (Uniprot Q6V1X1)
Specificity:	Human DPRP1.
Reactivity:	Human
Purification:	Immunoaffinity purified
Presentation:	0.1 M Tris-glycine, pH 7, 10% Glycerol, 0.01% Thimerosal
Recommended Storage:	Aliquot and store at -20°C. Minimize freezing and thawing.
Uses:	IHC - Paraffin (10 µg/ml), ICC, Immunofluorescence (1:100 - 1:200), Western blot (1:500 - 1:3000) (Optimal dilution to be determined by the researcher)
Size:	50 µl
Concentration:	1 mg/ml

Immunohistochemistry Image:



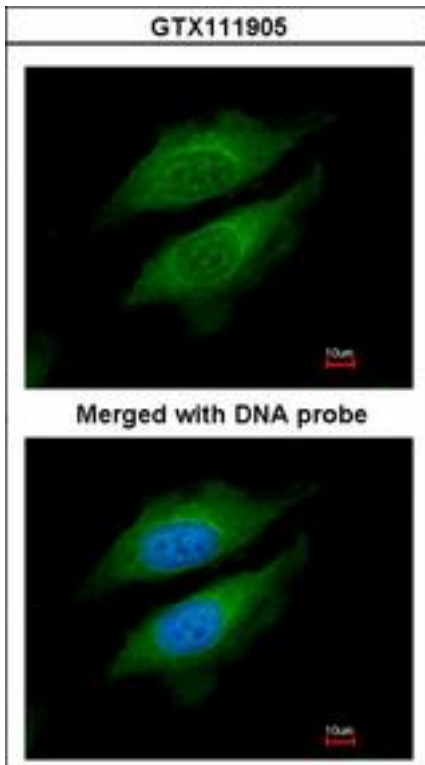
Anti-DPP8 antibody IHC of human prostate. Immunohistochemistry of formalin-fixed, paraffin-embedded tissue after heat-induced antigen retrieval. Antibody LS-B4859 concentration 10 ug/ml.

Immunohistochemistry Image:



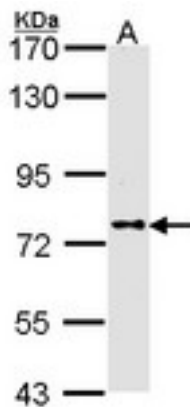
Anti-DPP8 antibody IHC of human placenta. Immunohistochemistry of formalin-fixed, paraffin-embedded tissue after heat-induced antigen retrieval. Antibody LS-B4859 concentration 10 ug/ml.

Immunofluorescence Image:



Immunofluorescence of paraformaldehyde-fixed HeLa, using DPRP1 antibody at 1:200 dilution.

Western Blot Image:



Sample (30 ug of whole cell lysate). A: A431. 7.5% SDS PAGE. DPP8 antibody. DPP8 antibody diluted at 1:1000.

Requested From:

Japan

Laboratory Reagent For In Vitro Research Use Only

Not for resale without prior written consent from LifeSpan BioSciences, Inc.

Created on 9/24/2014

© 2014 LifeSpan BioSciences