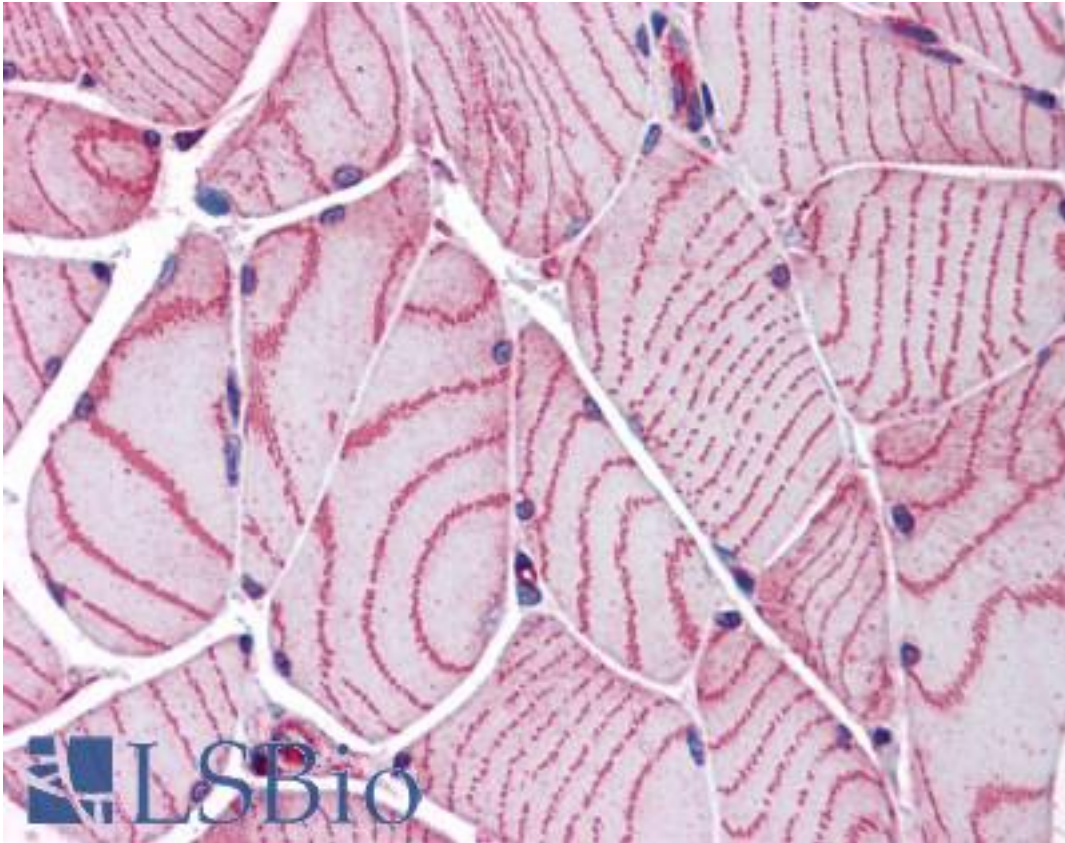


**ACTN2 Rabbit anti-Human Polyclonal Antibody - LS-B4852 - LSBio**

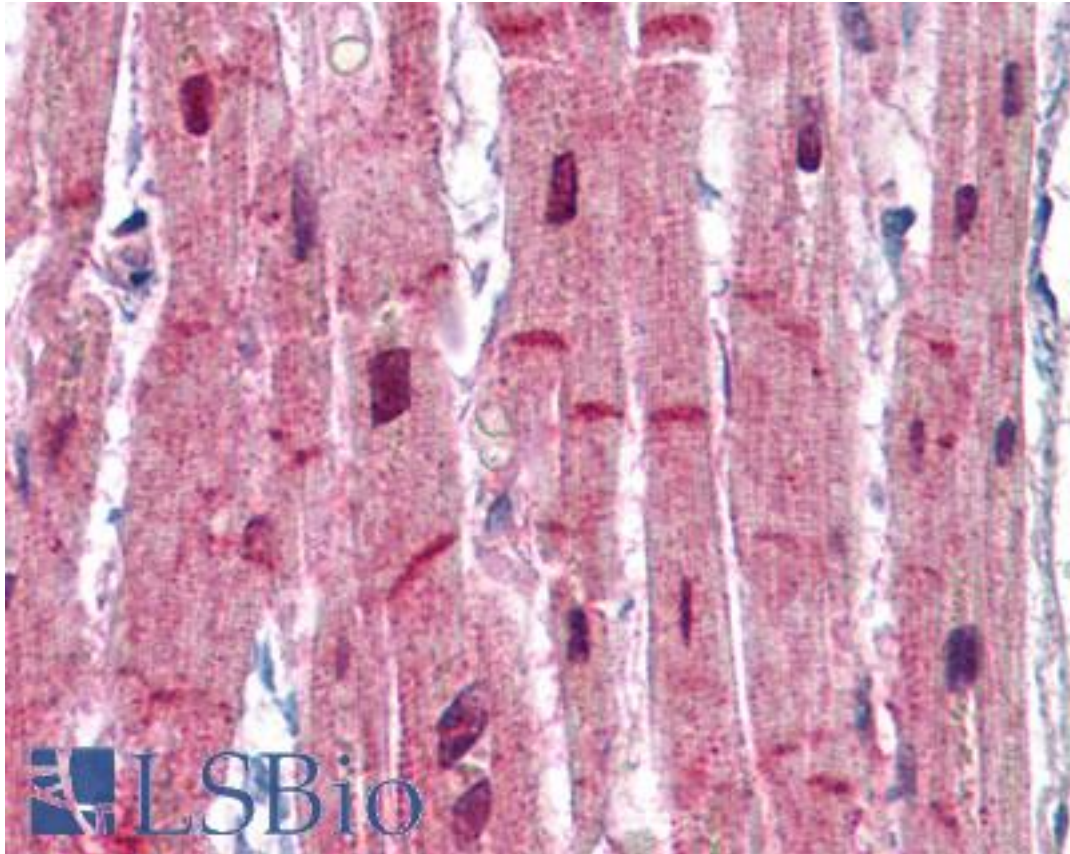
<b>CatalogID:</b>	LS-B4852
<b>Validation:</b>	This antibody replaces catalog number LS-C109449. It has been validated for use in the following assays: IHC-P.
<b>Target:</b>	actinin, alpha 2 (ACTN2)
<b>Synonyms:</b>	ACTN2 Antibody, Actinin, alpha 2 Antibody, Alpha-actinin skeletal muscle Antibody, CMD1AA Antibody, F-actin cross-linking protein Antibody, Alpha-actinin-2 Antibody
<b>Host</b>	ACTN2 antibody was produced in Rabbit
<b>Clonality:</b>	Polyclonal
<b>Immunogen Species:</b>	ACTN2 antibody was raised against Human
<b>Immunogen:</b>	ACTN2 antibody was raised against recombinant protein fragment containing a sequence corresponding to a region within amino acids 215 and 500 of actinin, alpha 2.
<b>Specificity:</b>	Human alpha Actinin 2. Predicted cross-reactivity based on amino acid sequence homology: mouse (100%), rat (85%), bovine (84%), monkey (100%), zebrafish (86%).
<b>Reactivity:</b>	Human
<b>Purification:</b>	Immunoaffinity purified
<b>Presentation:</b>	0.1 M Tris-glycine, pH 7, 10% Glycerol, 0.01% Thimerosal
<b>Recommended Storage:</b>	Aliquot and store at -20°C. Minimize freezing and thawing.
<b>Uses:</b>	IHC - Paraffin (10 µg/ml), ICC, Immunofluorescence (1:100 - 1:200), Western blot (1:500 - 1:3000) (Optimal dilution to be determined by the researcher)
<b>Size:</b>	50 µl
<b>Concentration:</b>	1 mg/ml

**Immunohistochemistry Image:**



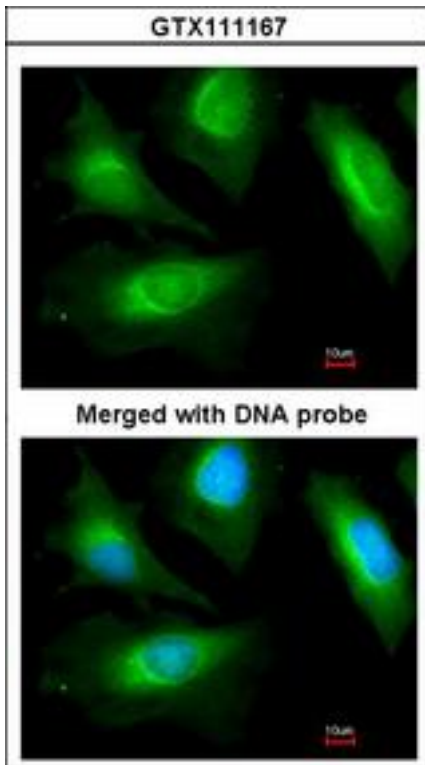
Anti-ACTN2 antibody IHC of human skeletal muscle. Immunohistochemistry of formalin-fixed, paraffin-embedded tissue after heat-induced antigen retrieval. Antibody LS-B4852 concentration 10 ug/ml.

**Immunohistochemistry Image:**



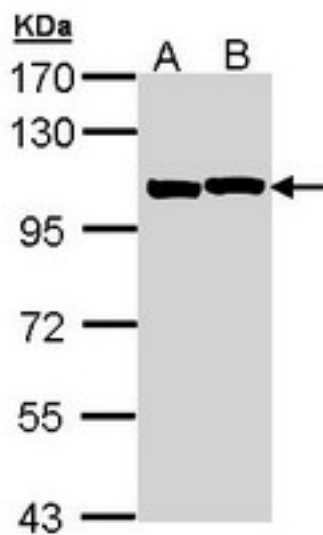
Anti-ACTN2 antibody IHC of human heart. Immunohistochemistry of formalin-fixed, paraffin-embedded tissue after heat-induced antigen retrieval. Antibody LS-B4852 concentration 10 ug/ml.

**Immunofluorescence Image:**



Immunofluorescence of paraformaldehyde-fixed HeLa, using actinin, alpha 2 antibody at 1:200 dilution.

**Western Blot Image:**



Sample (30 ug of whole cell lysate). A: A431. B: H1299. 7.5% SDS PAGE. ACTN2 antibody diluted at 1:1000.

Requested From:

Japan

Laboratory Reagent For In Vitro Research Use Only

Not for resale without prior written consent from LifeSpan BioSciences, Inc.

Created on 9/24/2014

© 2014 LifeSpan BioSciences